



DATA EXPLANATORY KEY

0: ZERO

The figure may appear in graphs and tables of some sections of the report, such as: **total number of animals** (of different species) **marketed** (export and domestic quality) **in Hargeisa, Burao and Tog Wajaale, total number of heads (of different species) exported from Berbera port and cross-border trade with Djibouti through Lowya Caddo, Hides & Skins exported from Berbera Port.** Months when animals of a particular species of export or/and domestic quality are no traded in Hargeisa, Burao or Tog Wajaale are represented as 0 (ZERO) in the respective table/s. Zero values should be similarly considered in the tables of livestock export from Berbera port and cross border trade with Djibouti.

“No Chilled Meat Exported by H-Foods Ltd. during the Period”

The message “No chilled meat exported during the period” may appear in section of chilled meat exported by H-Foods Ltd. without any other information displayed on the page. For example, if no chilled meat has been exported by H-Foods Ltd. during the entire 4 month period the correspondent section of the report will show the message “No chilled meat exported by H-Foods Ltd. during the period.”



Funded by :

Implemented by:



For any query please do not hesitate to contact the Somaliland Chamber of Commerce, Industry and Agriculture.

Contact Person:
Mohamed Abdullahi Dirie

Telephone:
+252-2-523143

Email Address:
slcham93@gmail.com

Please send us an e-mail for any request to be included in our mailing list for this monthly report.

Raw data are also available on request using the form on our web site.

For previous issues of this report please visit our web site:

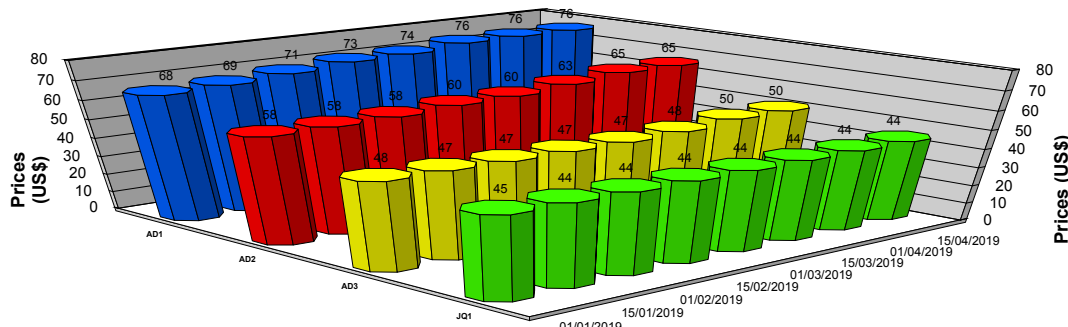
WWW.SOMALILANDCHAMBER.COM

DATA STATISTICALLY VALIDATED

Visit www.somalilandchamber.com for more details



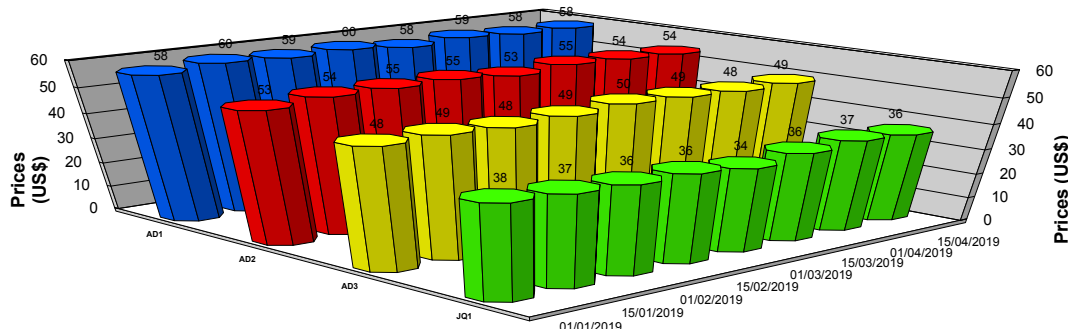
Hargeisa - Small Ruminants Export Quality Prices in USD



Note: Prices represent the average of two weeks prices from the respective market

Code	Description	4 Months Average Price	4 Months Minimum Price	4 Months Maximum Price
AD1	Small Ruminants Grade 1	72.69	66.97	76.05
AD2	Small Ruminants Grade 2	60.94	56.97	65.06
AD3	Small Ruminants Grade 3	48.01	46.97	50.05
JQ1	Lambs/Kids Grade 1	44.12	43.95	45.97

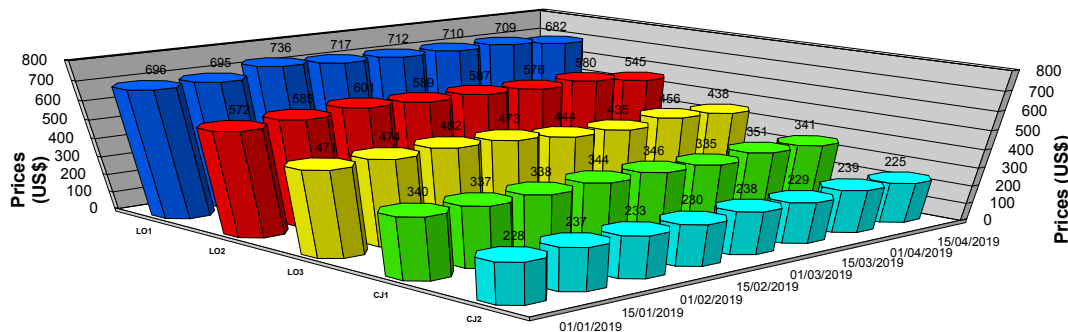
Burao - Small Ruminants Export Quality Prices in USD



Note: Prices represent the average of two weeks prices from the respective market

Code	Description	4 Months Average Price	4 Months Minimum Price	4 Months Maximum Price
AD1	Small Ruminants Grade 1	58.68	55.00	60.00
AD2	Small Ruminants Grade 2	54.03	50.00	56.00
AD3	Small Ruminants Grade 3	48.62	45.00	50.26
JQ1	Lambs/Kids Grade 1	36.04	33.00	38.60

Tog Wajaale - Cattle Export Quality Prices in USD



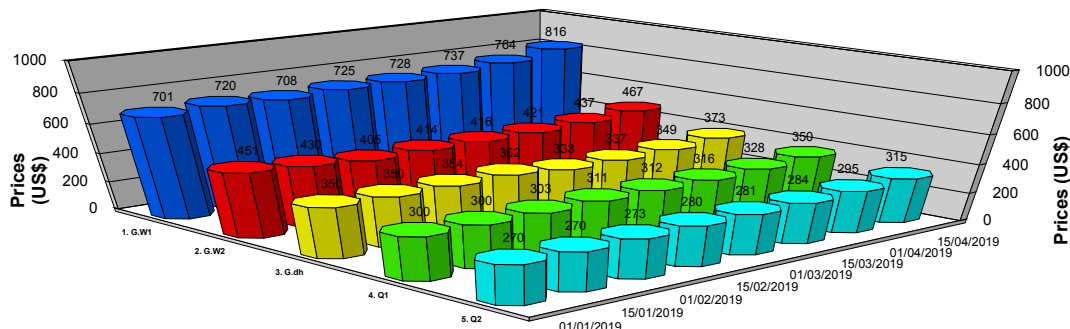
Note: Prices represent the average of two weeks prices from the respective market

Code	Description	4 Months Average Price	4 Months Minimum Price	4 Months Maximum Price
LO1	Cattle Mature GR1	706.79	650.00	760.00
LO2	Cattle Mature GR2	579.51	530.00	616.00
LO3	Cattle Mature GR3	459.24	425.00	487.50
CJ1	Cattle Immature GR1	341.49	325.00	357.50
CJ2	Cattle Immature GR2	232.63	220.00	250.00





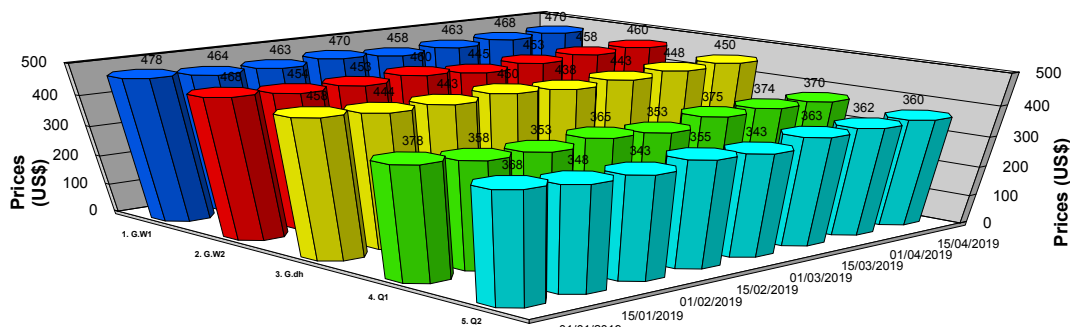
Hargeisa - Camel Export Quality Prices in USD



Note: Prices represent the average of two weeks prices from the respective market

Code	Description	4 Months Average Price	4 Months Minimum Price	4 Months Maximum Price
1. G.W1	Camel Mature GR1	737.74	696.52	823.53
2. G.W2	Camel Mature GR2	430.18	400.00	470.59
3. G.dh	Camel Intermediate	351.08	331.61	376.47
4. Q1	Camel Immature GR1	314.91	298.51	352.94
5. Q2	Camel Immature GR2	283.42	268.66	317.65

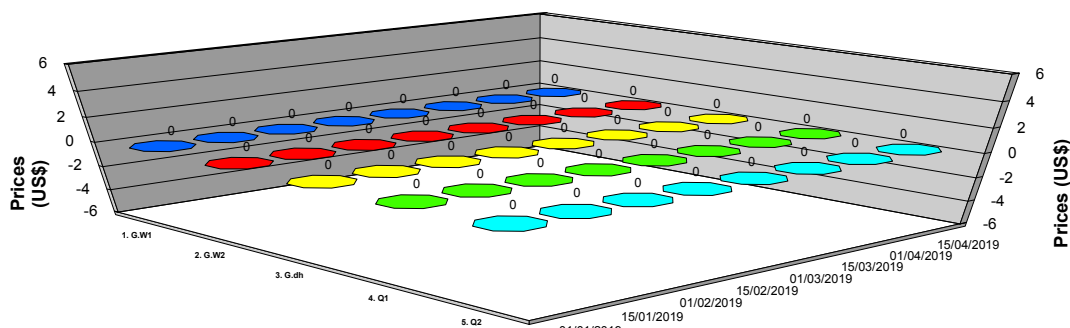
Burao - Camel Export Quality Prices in USD



Note: Prices represent the average of two weeks prices from the respective market

Code	Description	4 Months Average Price	4 Months Minimum Price	4 Months Maximum Price
1. G.W1	Camel Mature GR1	466.47	450.00	490.00
2. G.W2	Camel Mature GR2	456.16	439.64	480.00
3. G.dh	Camel Intermediate	446.47	430.00	470.00
4. Q1	Camel Immature GR1	365.59	340.00	390.00
5. Q2	Camel Immature GR2	355.00	330.00	380.00

Tog Wajaale - Camel Export Quality Prices in USD



Note: Prices represent the average of two weeks prices from the respective market

Code	Description	4 Months Average Price	4 Months Minimum Price	4 Months Maximum Price
1. G.W1	Camel Mature GR1	0.00	0.00	0.00
2. G.W2	Camel Mature GR2	0.00	0.00	0.00
3. G.dh	Camel Intermediate	0.00	0.00	0.00
4. Q1	Camel Immature GR1	0.00	0.00	0.00
5. Q2	Camel Immature GR2	0.00	0.00	0.00

* Please refer to the data explanatory key in the first page

DATA STATISTICALLY VALIDATED

Visit www.somalilandchamber.com for more details

Funded by :

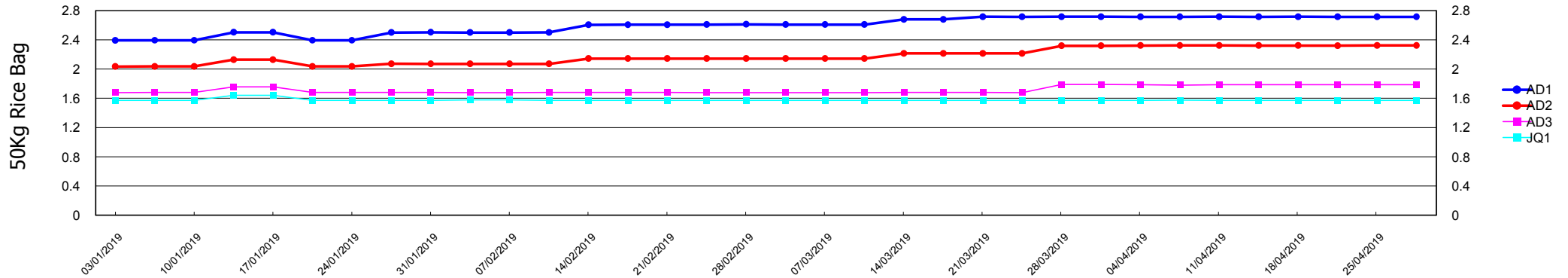


Implemented by :

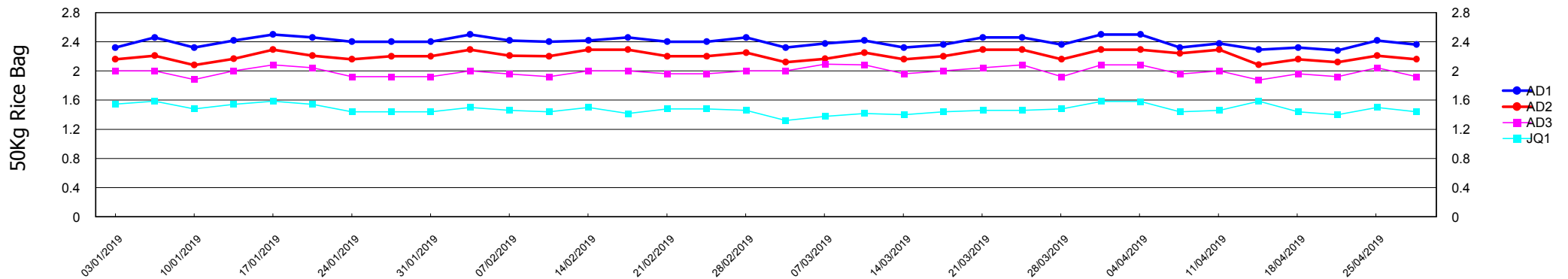




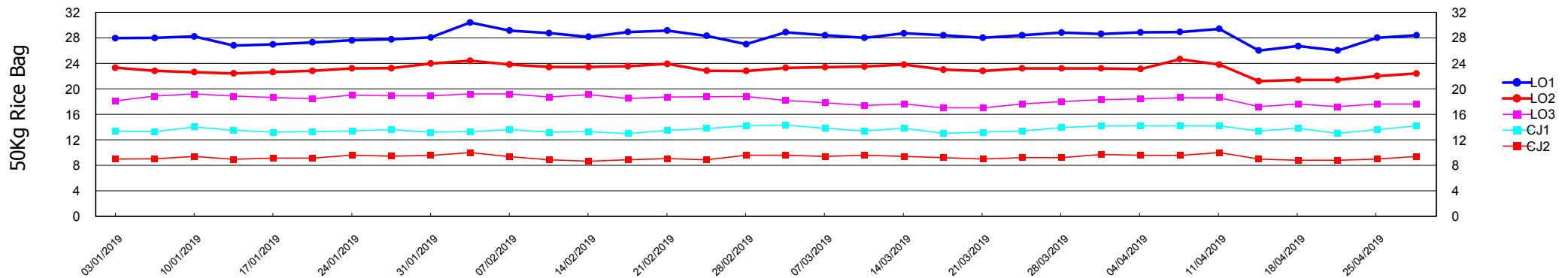
Terms of Trade : Number of 50Kg Rice Bags bought from sale of one export quality small ruminant in Hargeisa



Terms of Trade : Number of 50Kg Rice Bags bought from sale of one export quality small ruminant in Burao

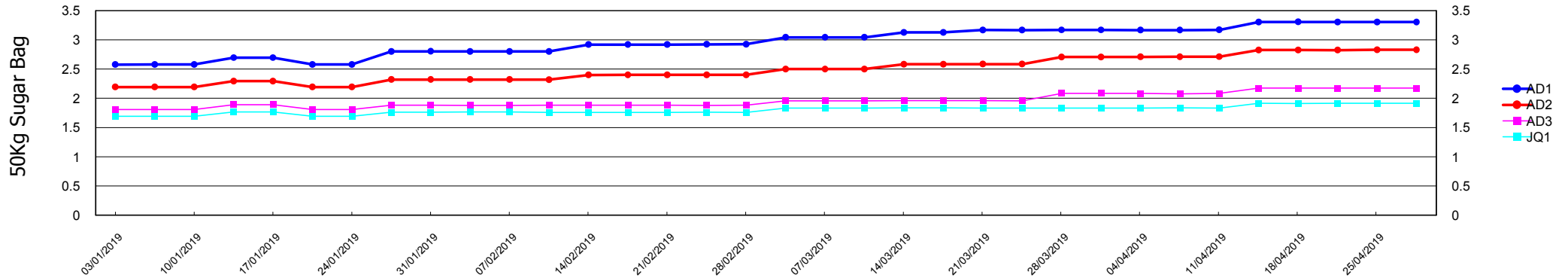


Terms of Trade : Number of 50Kg Rice Bags bought from sale of one export quality cattle in Tog Wajaale

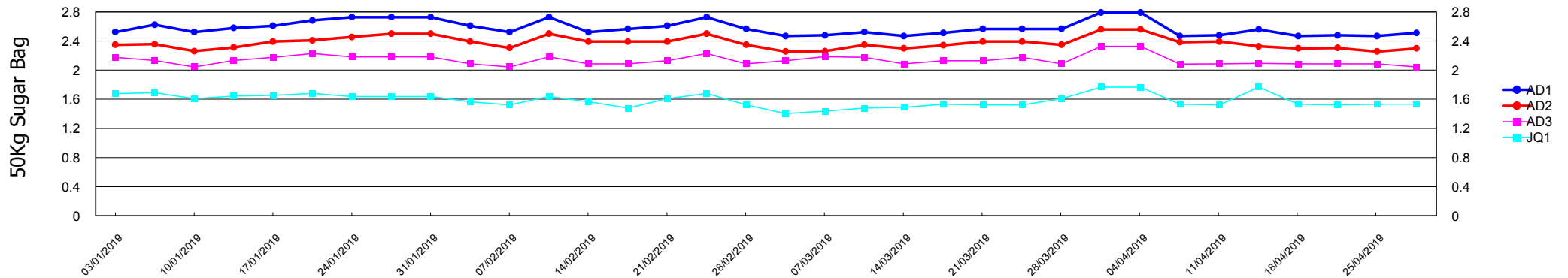




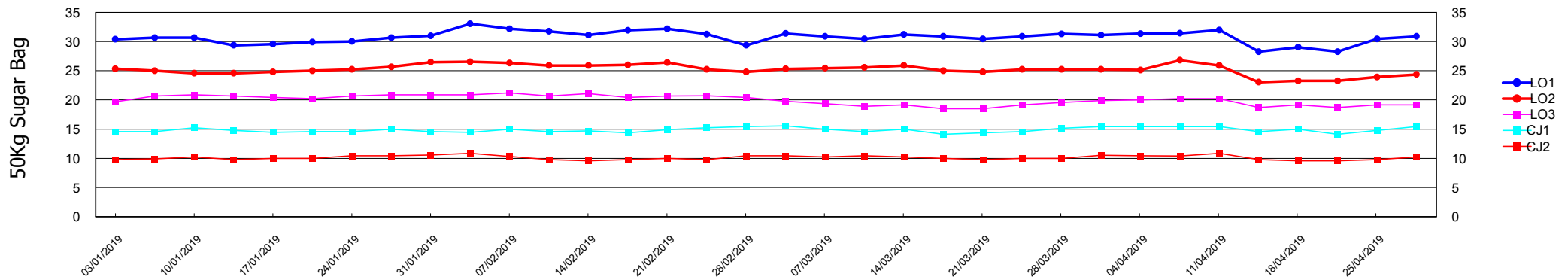
Terms of Trade : Number of 50Kg Sugar Bags bought from sale of one export quality small ruminant in Hargeisa



Terms of Trade : Number of 50Kg Sugar Bags bought from sale of one export quality small ruminant in Burao

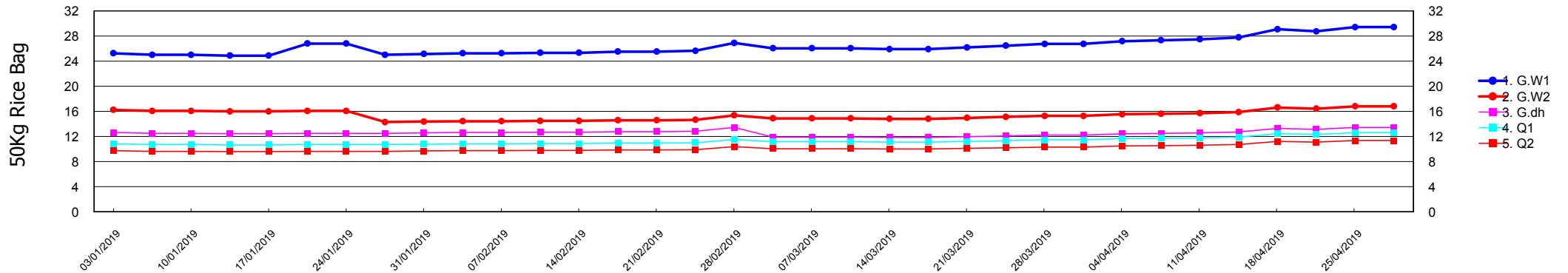


Terms of Trade : Number of 50Kg Sugar Bags bought from sale of one export quality cattle in Tog Wajaale

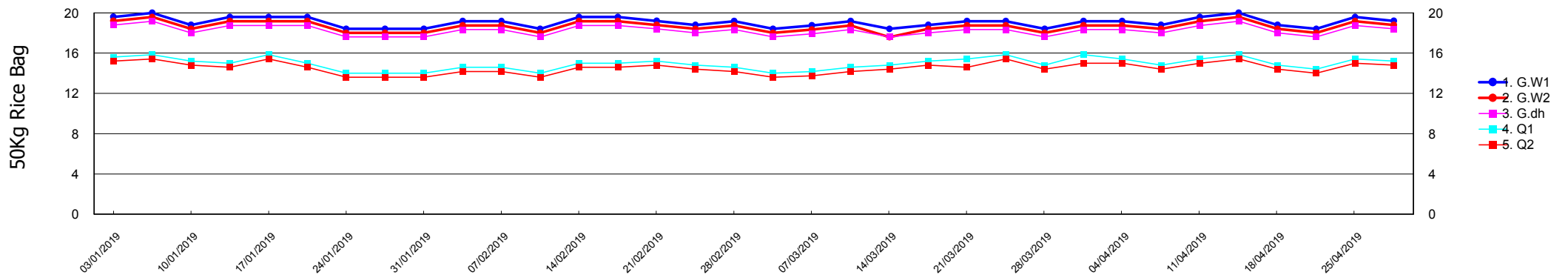




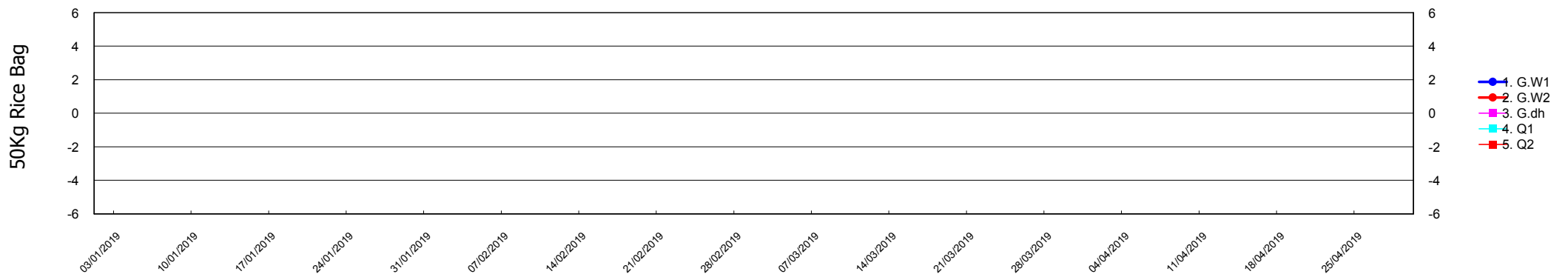
Terms of Trade : Number of 50Kg Rice Bags bought from sale of one export quality camel in Hargeisa



Terms of Trade : Number of 50Kg Rice Bags bought from sale of one export quality camel in Burao

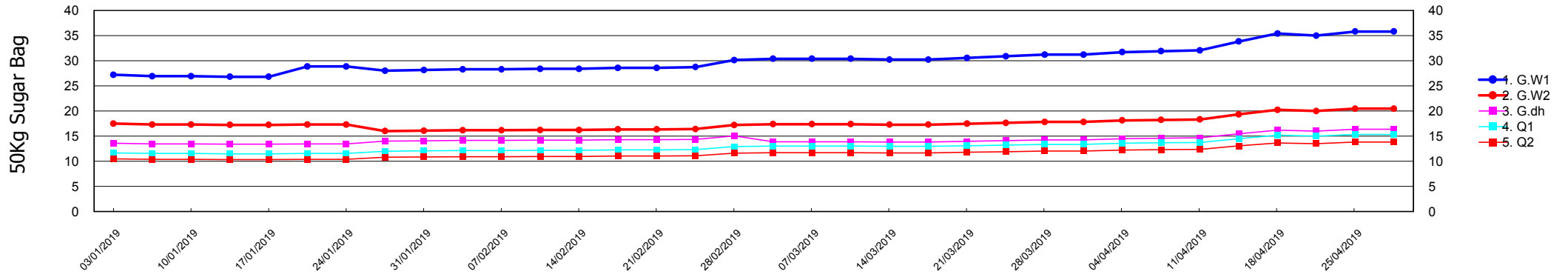


Terms of Trade : Number of 50Kg Rice Bags bought from sale of one export quality camel in Tog Wajaale

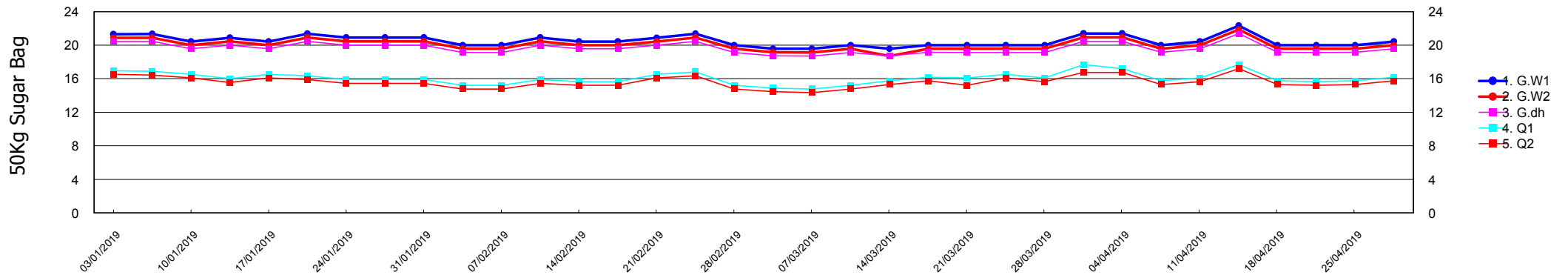




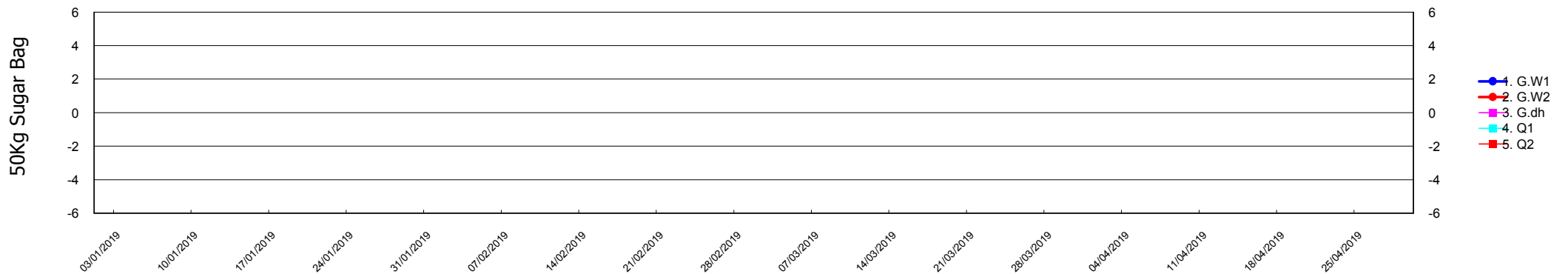
Terms of Trade : Number of 50Kg Sugar Bags bought from sale of one export quality camel in Hargeisa



Terms of Trade : Number of 50Kg Sugar Bags bought from sale of one export quality camel in Burao

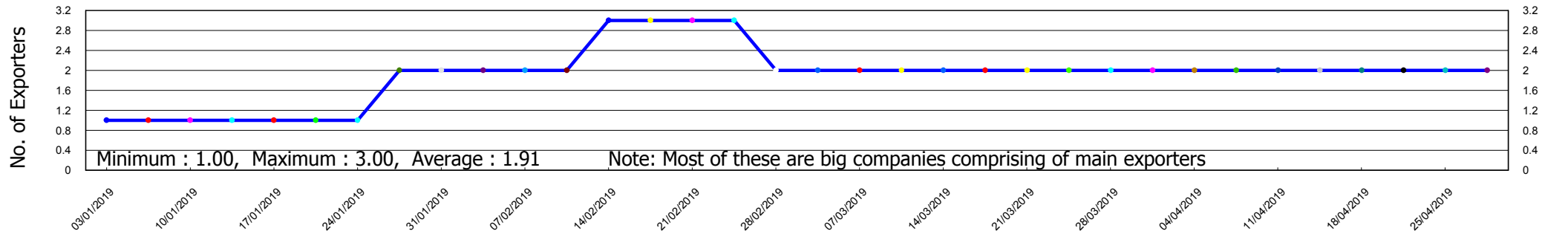


Terms of Trade : Number of 50Kg Sugar Bags bought from sale of one export quality camel in Tog Wajaale

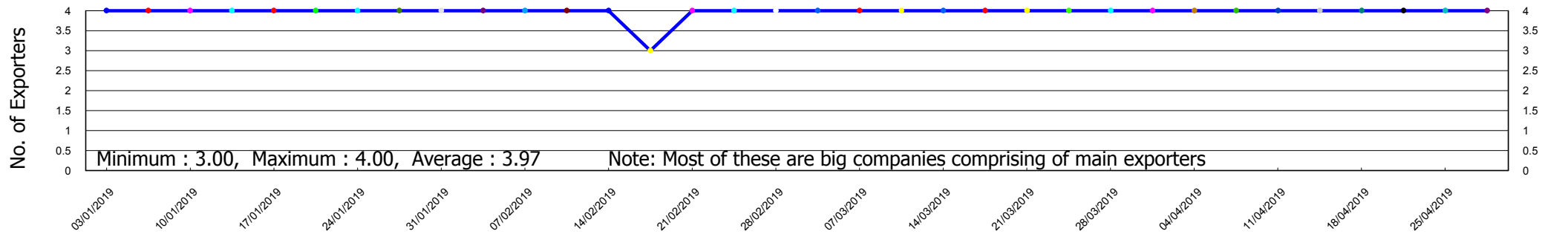




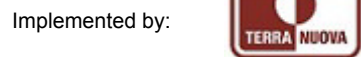
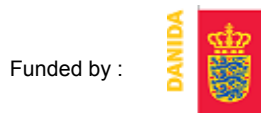
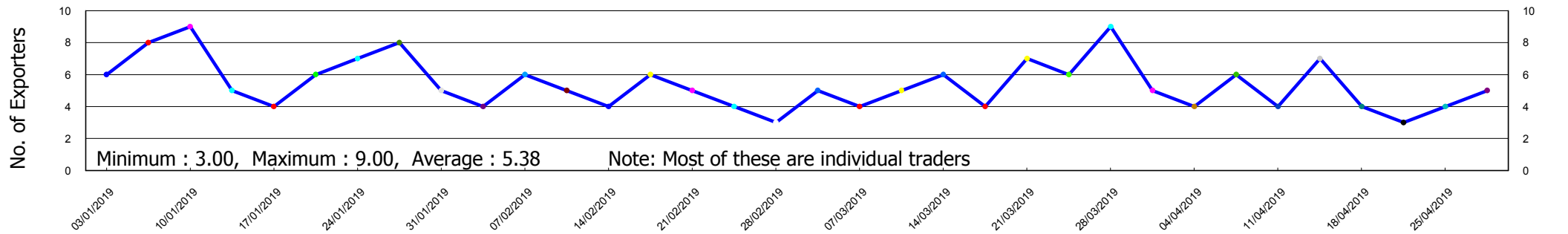
Hargeisa - Number of Exporters Present in the Market



Burao - Number of Exporters Present in the Market

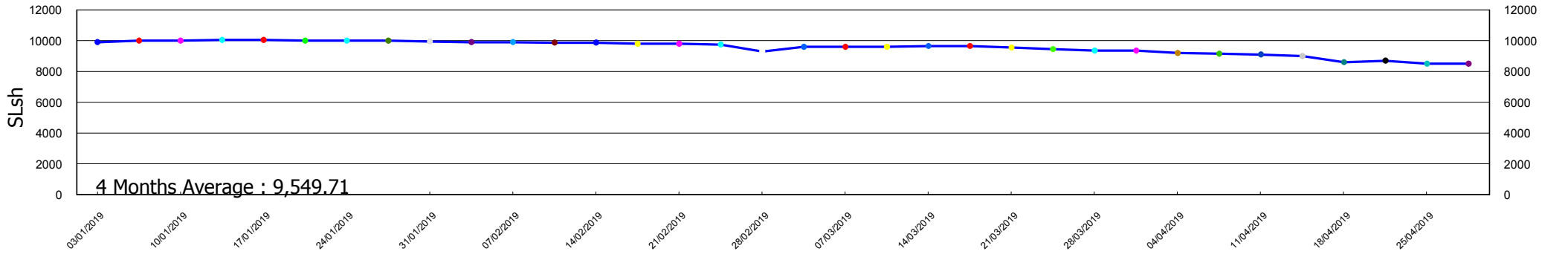


Tog Wajaale - Number of Exporters Present in the Market

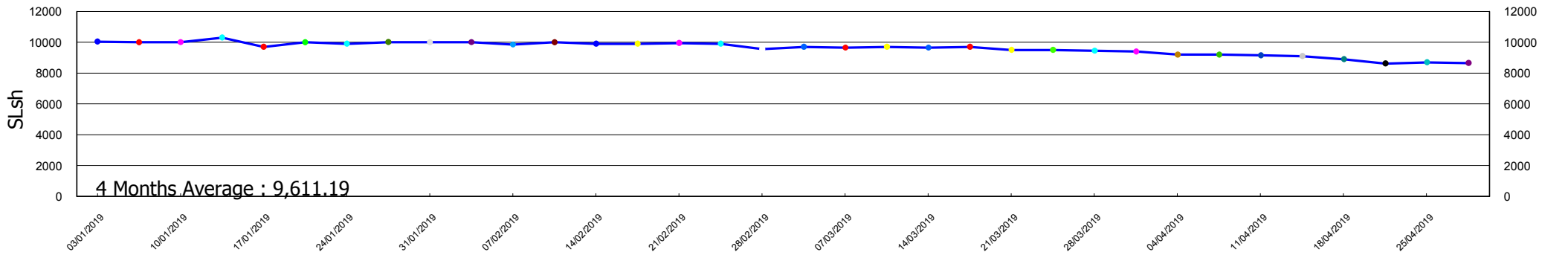




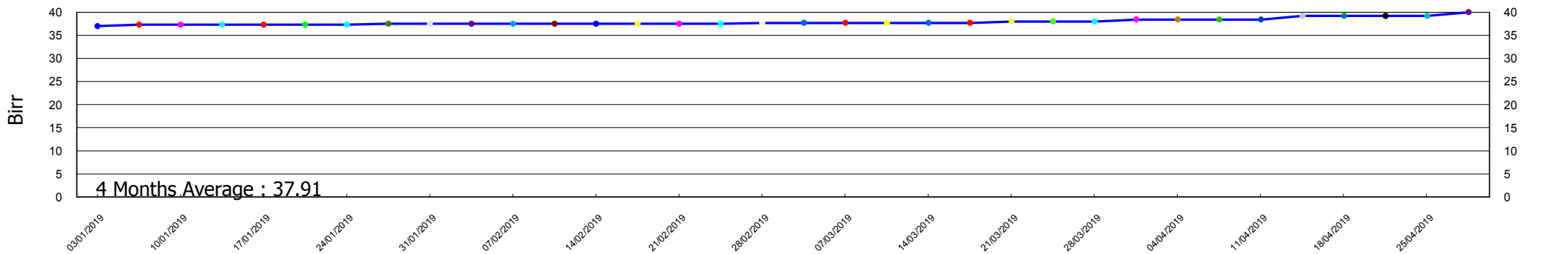
Hargeisa - Currency Exchange Rates for 1US\$ to SLsh



Burao - Currency Exchange Rates for 1US\$ to SLsh

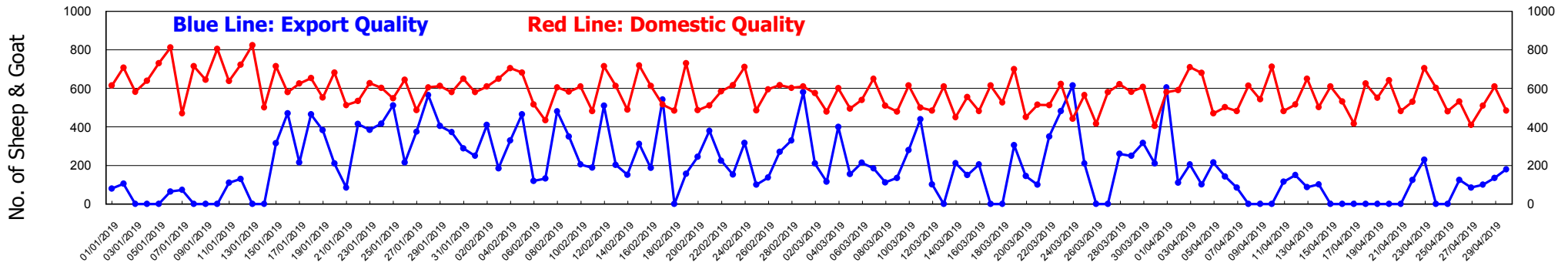


Tog Wajaale - Currency Exchange Rates for 1US\$ to Birr

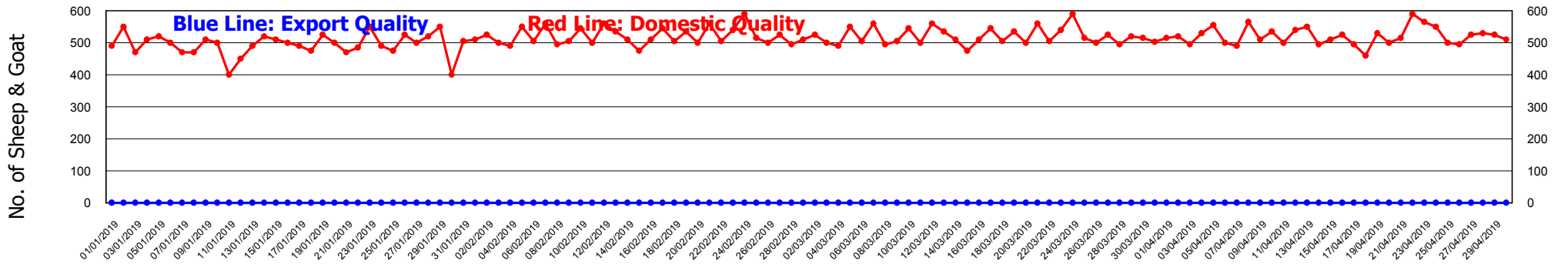




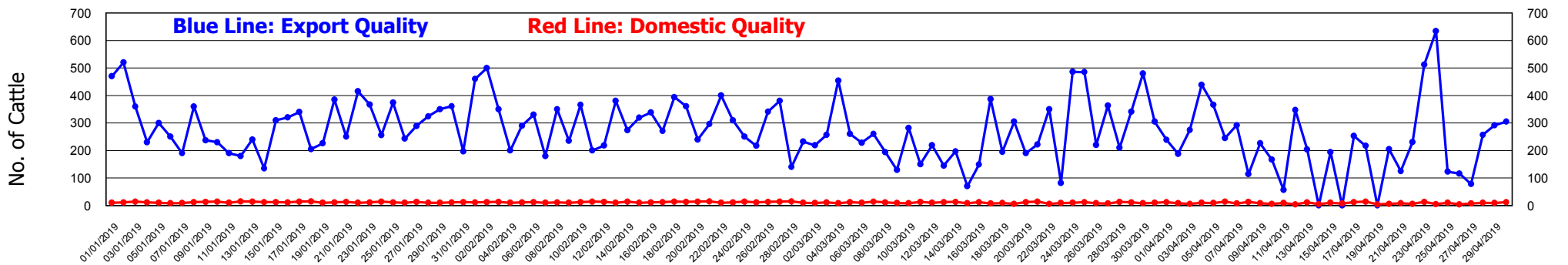
Hargeisa - Number of Sheep & Goats Marketed (Export & Domestic Quality) in the period



Burao - Number of Sheep & Goats Marketed (Export & Domestic Quality) in the period

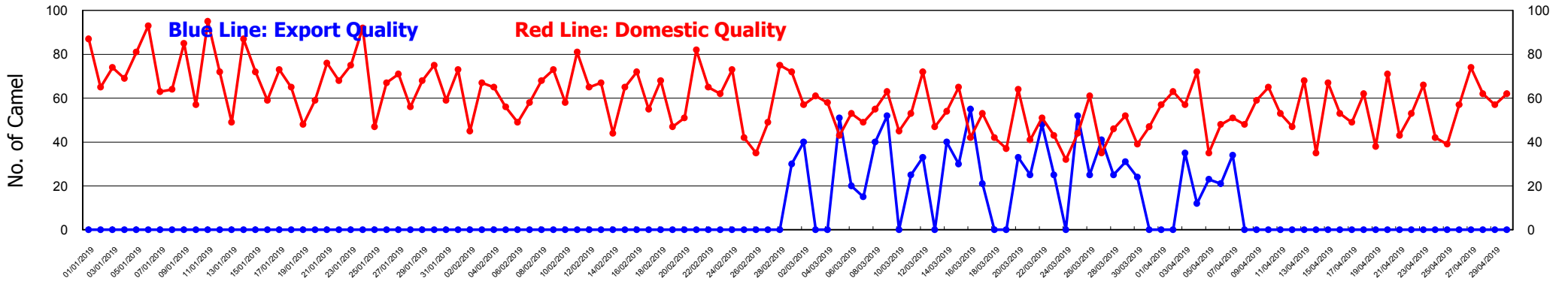


Tog Wajaale - Number of Cattle Marketed (Export & Domestic Quality) in the period

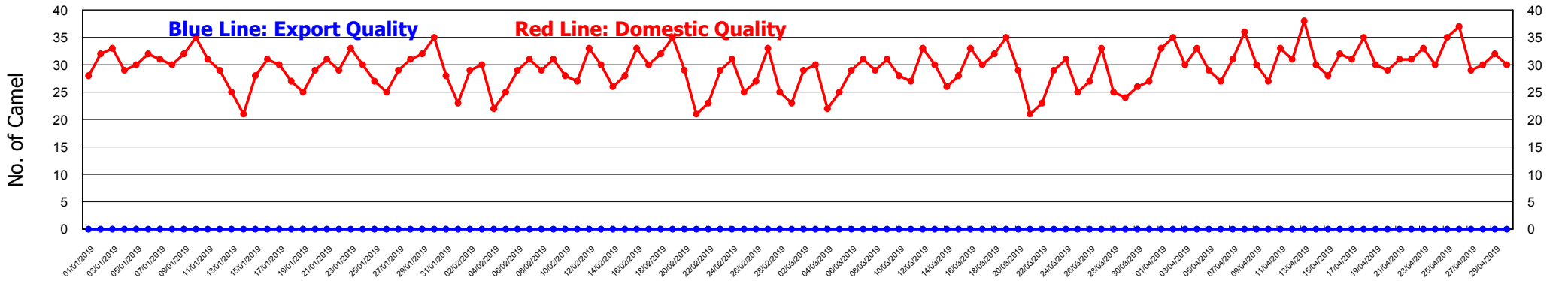




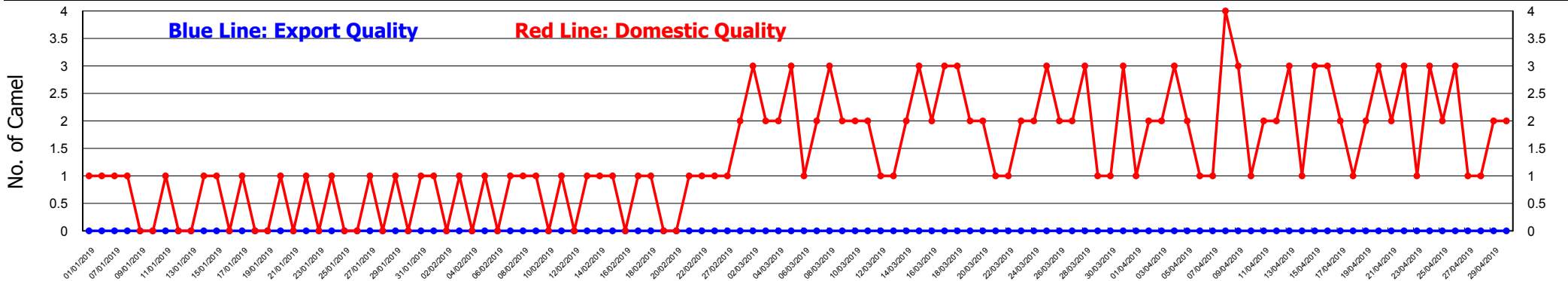
Hargeisa - Number of Camels Marketed (Export & Domestic Quality) in the period



Burao - Number of Camels Marketed (Export & Domestic Quality) in the period



Tog Wajaale - Number of Camels Marketed (Export & Domestic Quality) in the period



Funded by :

Implemented by:



* Please refer to the data explanatory key in the first page

DATA STATISTICALLY VALIDATED

Visit www.somalilandchamber.com for more details



Hargeisa - Total Number of Animals Marketed (Export & Domestic Quality) Blue Values: Export Quality Red Values: Domestic Quality

	Jan-19	Feb-19	Mar-19	Apr-19	Total
No. of Camels	0	0	781	125	906
	2,171	1,710	1,576	1,653	7,110
No. of Sheep & Goats	6,658	7,336	6,740	2,898	23,632
	19,619	16,552	16,801	16,761	69,733

Burao - Total Number of Animals Marketed (Export & Domestic Quality) Blue Values: Export Quality Red Values: Domestic Quality

	Jan-19	Feb-19	Mar-19	Apr-19	Total
No. of Camels	0	0	0	0	0
	918	794	871	946	3,529
No. of Sheep & Goats	0	0	0	0	0
	15,320	14,590	16,128	15,625	61,663

Tog Wajaale - Total Number of Animals Marketed (Export & Domestic Quality) Blue Values: Export Quality Red Values: Domestic Quality

	Jan-19	Feb-19	Mar-19	Apr-19	Total
No. of Camels	0	0	0	0	0
	14	16	64	62	156
No. of Cattle	9,104	8,590	8,066	6,701	32,461
	361	340	312	259	1,272

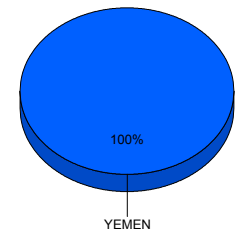
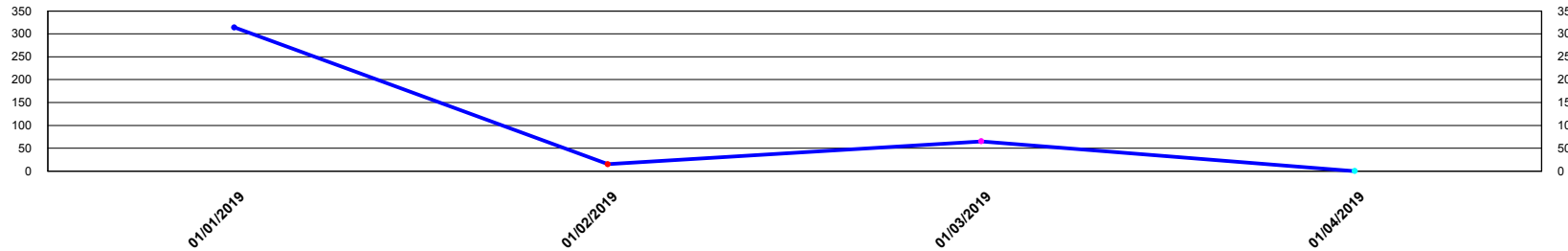




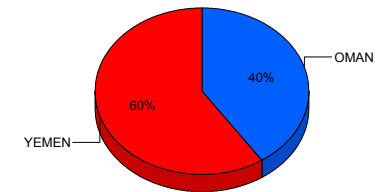
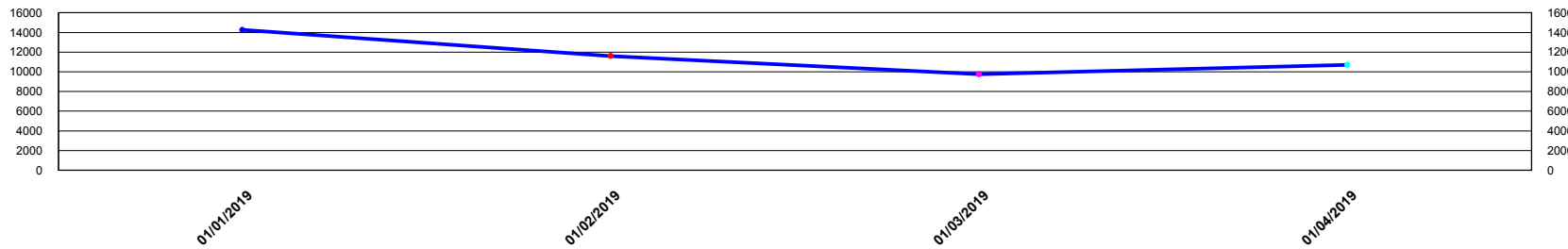
Total number of heads exported from Berbera port (Source: Berbera Port Authority)

	Jan-19	Feb-19	Mar-19	Apr-19	Total
Camels	314	15	65	0	394
Cattle	14,251	11,606	9,756	10,699	46,312
Sheep & Goats	22,430	31,079	28,577	19,751	101,837
Total	36,995	42,700	38,398	30,450	148,543

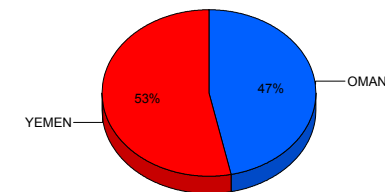
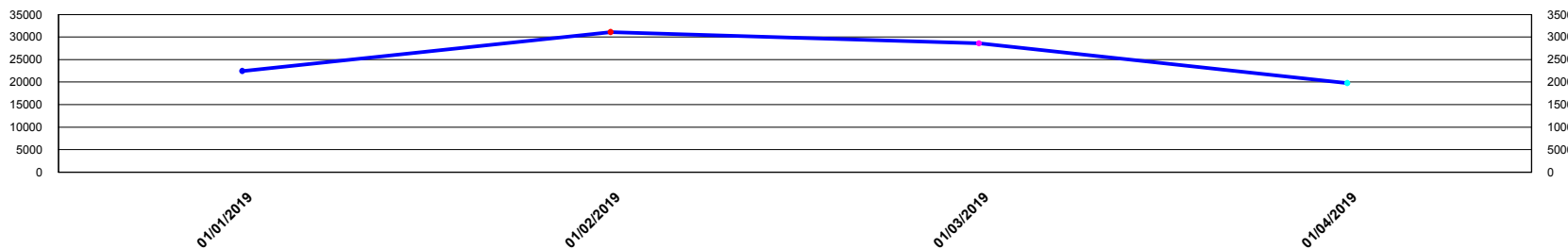
Number of Camels exported and percentage according to country of destination 0.27%



Number of Cattle exported and percentage according to country of destination 31.18%



Number of Sheep & Goats exported and percentage according to country of destination 68.56%



* Please refer to the data explanatory key in the first page

DATA STATISTICALLY VALIDATED

Visit www.somalilandchamber.com for more details



Livestock exported to OMAN from Berbera port according to vessel capacity (Source: Berbera Port Authority)

Vessel Name	Ship Capacity (In Tons)	Trips Made	Total Shoats	Total Cattle	Total Camel	Total Heads
S/K CITY	686	1	0	499	0	499
S/K TUURI	712	1	0	489	0	489
S/K HAJI PEER	1,100	1	4,650	0	0	4,650
S/K GOSE AAZAM	720	2	0	1,000	0	1,000
S/K FALLASI	711	1	0	499	0	499
S/K FAIZE SULDAN	700	2	0	998	0	998
S/K FAIZANE MOHAMED	745	1	0	495	0	495
S/K FAIS JARABATI	891	1	0	499	0	499
S/K JAZIKA	850	1	0	448	0	448
S/K DAIBALA	888	1	0	500	0	500
S/K IBRAAHIM	700	2	5,000	499	0	5,499
S/K BEER/BEER	991	1	4,077	0	0	4,077
S/K AMIR ALI	880	1	0	500	0	500
S/K AMAL SAKAR	658	1	0	498	0	498
S/K ALI MADAD	600	2	10,000	0	0	10,000
S/K AL SHAAM	828	1	0	500	0	500
S/K AL HUDDA	802	1	0	465	0	465
S/K AISH KAMARI	773	1	4,780	0	0	4,780
S/K DEIV KOBRA	903	1	0	498	0	498
S/K NOORI ISMAILI	540	1	0	498	0	498
S/K SIMNAM	799	2	0	1,000	0	1,000
S/K SHEIKH MUHAYADIIN	771	1	4,612	0	0	4,612
S/K SHAMA	699	1	0	500	0	500
S/K SHAHI MOHUYUDIIN	850	2	4,929	520	0	5,449
S/K SULEIMANI	650	1	0	500	0	500
S/K MOHBOOB	550	2	0	987	0	987
S/K SAHRO	870	1	0	501	0	501
S/K SULDAN MAHDI	855	1	0	510	0	510



**Livestock exported to OMAN from Berbera port according to vessel capacity (Source: Berbera Port Authority)**

Vessel Name	Ship Capacity (In Tons)	Trips Made	Total Shoats	Total Cattle	Total Camel	Total Heads
S/K RAHMA	775	1	0	450	0	450
S/K SHAHI AL KASIM	888	1	4,555	0	0	4,555
S/K NOORI	950	6	4,930	2,458	0	7,388
S/K SULTAN MOHUTADIIN	1,021	1	0	499	0	499
S/K NIGHEA MUKHDUMI	1,010	1	0	450	0	450
S/K NAAIS	692	1	0	497	0	497
S/K TOWFIIQ 1	777	1	0	500	0	500
S/K SAFA	680	1	0	495	0	495
Sub Total :			47,533	18,752	0	66,285

Funded by :



Implemented by:



* Please refer to the data explanatory key in the first page

DATA STATISTICALLY VALIDATED

Visit www.somalilandchamber.com for more details



Livestock exported to YEMEN from Berbera port according to vessel capacity (Source: Berbera Port Authority)

Vessel Name	Ship Capacity (In Tons)	Trips Made	Total Shoats	Total Cattle	Total Camel	Total Heads
S/K AL HASSANI	900	1	0	494	0	494
S/K AL MADAR	450	1	1,077	395	0	1,472
S/K AL SAEED	550	2	766	299	0	1,065
S/K AL HASSAN	850	1	0	281	0	281
S/K AL FARDOOS	550	1	206	302	0	508
M/V NOBA 2	1,046	8	19,590	9,754	20	29,364
M/V NOBA 1	926	6	9,754	7,310	0	17,064
S/K GOUSHA	925	1	0	498	0	498
S/K SHAHI	712	1	1,375	200	15	1,590
S/K DEIV KOBRA	903	1	1,123	0	242	1,365
M/V HAMZA	811	5	9,422	5,104	0	14,526
S/K NEGEYE KOBRA	714	1	1,388	99	72	1,559
S/K KAMAARA	653	1	2,684	0	0	2,684
S/K MADAF	890	2	814	617	0	1,431
S/K MARWAH	850	1	1,540	272	0	1,812
S/K MATAFI	670	1	1,100	520	0	1,620
S/K MOHAMMED	790	2	2,655	617	45	3,317
S/K DAHA	450	3	810	798	0	1,608
Sub Total :			54,304	27,560	394	82,258

Grand Total : 101,837 46,312 394 148,543

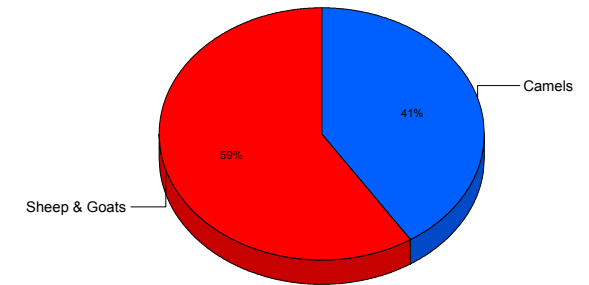
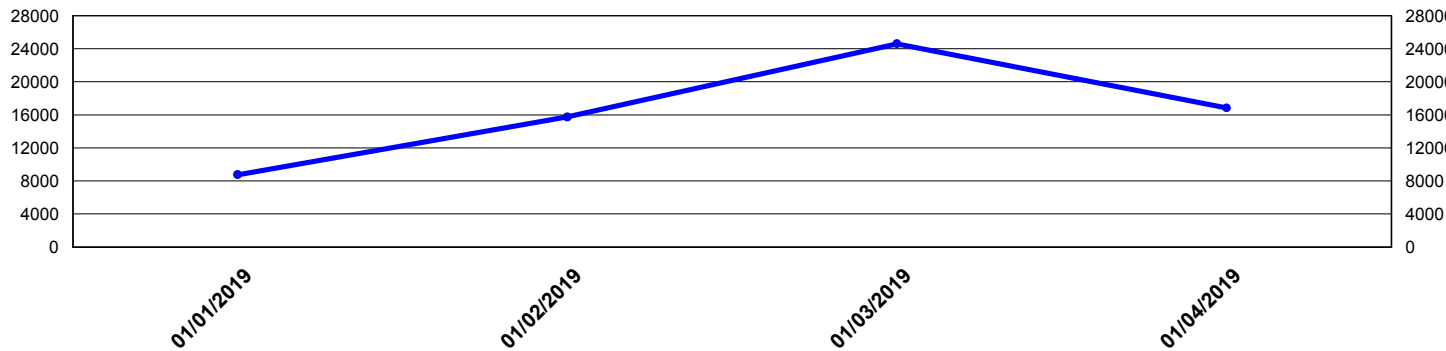




Cross Border Trade with Djibouti through Lowya-Caddo (Source: Lowya-Caddo Customs Office)

	Jan-19	Feb-19	Mar-19	Apr-19	Total
Camels	4,056	3,290	10,700	8,934	26,980
Sheep & Goats	4,700	12,450	13,900	7,900	38,950
Total	8,756	15,740	24,600	16,834	65,930

Total Number of Animals Exported to Djibouti through Lowya Caddo during the period





Comparison of monthly quantities of different species marketed (Export Quality Sheep, Goats and Camels in Hargeisa and Burao; Cattle & Camels in Tog Wajaale) and **Exported

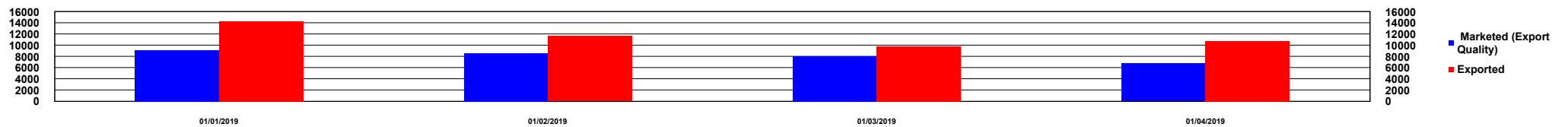
		Jan-19	Feb-19	Mar-19	Apr-19	Total
Camels	Marketed (Export Quality)	0	0	781	125	906
	Exported	4,370	3,305	10,765	8,934	27,374
Cattle	Marketed (Export Quality)	9,104	8,590	8,066	6,701	32,461
	Exported	14,251	11,606	9,756	10,699	46,312
Sheep & Goats	Marketed (Export Quality)	6,658	7,336	6,740	2,898	23,632
	Exported	27,130	43,529	42,477	27,651	140,787

**** Exported : Number of Animal Exported through Berbera Port and Lowya-Caddo**

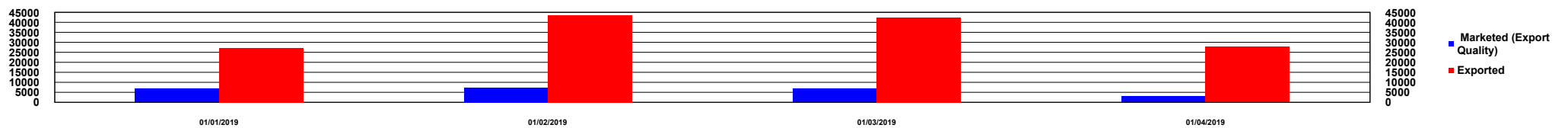
Comparison of monthly quantities of Camels Marketed (Export Quality in Hargeisa, Burao and Tog Wajaale) and **Exported



Comparison of monthly quantities of Cattle Marketed (Export Quality in Tog Wajaale) and **Exported



Comparison of monthly quantities of Sheep & Goats Marketed (Export Quality in Hargeisa and Burao) and **Exported





NO CHILLED MEAT EXPORTED BY H-FOODS Ltd. DURING THE PERIOD *

Funded by :



Implemented by:



* Please refer to the data explanatory key in the first page

DATA STATISTICALLY VALIDATED

Visit www.somalilandchamber.com for more details

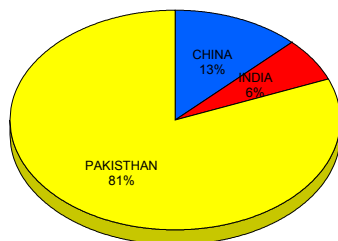


Hides & Skins Exported from Berbera Port and through Djibouti Port

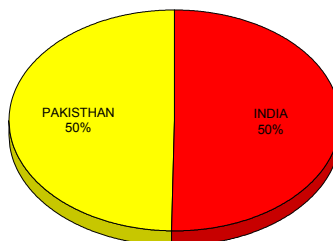
Export Date	Type	SHEEP & GOATS		CATTLE		CAMEL	
		Qty	Weight (Kgs)	Qty	Weight (Kgs)	Qty	Weight (Kgs)
	DRY						
Jan 2019	DRY	48,000	38,400	3,250	26,000		
Feb 2019	DRY	99,000	79,200	1,300	10,400		
Mar 2019	DRY	75,400	60,320	4,850	38,800		
Apr 2019	DRY	86,400	69,120	2,800	2,240		
	Sub Total :	308,800	247,040	12,200	77,440		
	WET BLUE						
Jan 2019	WET BLUE	24,000	19,200				
Feb 2019	WET BLUE	48,000	38,400				
	Sub Total :	72,000	57,600				
	Grand Total :	380,800	304,640	12,200	77,440		

Destination of Hides & Skins Exported from Berbera Port and through Djibouti Port

SHEEP & GOATS



CATTLE



* Please refer to the data explanatory key in the first page

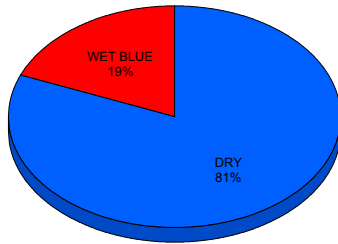
DATA STATISTICALLY VALIDATED

Visit www.somalilandchamber.com for more details

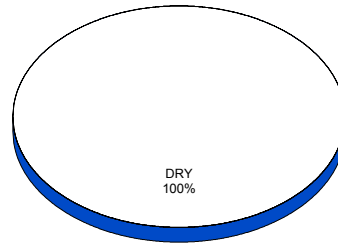


Type of Hides & Skins Exported from Berbera Port and through Djibouti Port

SHEEP & GOATS



CATTLE



Funded by :



Implemented by:



* Please refer to the data explanatory key in the first page

DATA STATISTICALLY VALIDATED

Visit www.somalilandchamber.com for more details