



DATA EXPLANATORY KEY

0: ZERO

The figure may appear in graphs and tables of some sections of the report, such as: **total number of animals** (of different species) **marketed** (export and domestic quality) **in Hargeisa, Burao and Tog Wajaale, total number of heads (of different species) exported from Berbera port and cross-border trade with Djibouti through Lowya Caddo, Hides & Skins exported from Berbera Port.** Months when animals of a particular species of export or/and domestic quality are no traded in Hargeisa, Burao or Tog Wajaale are represented as 0 (ZERO) in the respective table/s. Zero values should be similarly considered in the tables of livestock export from Berbera port and cross border trade with Djibouti.

For any query please do not hesitate to contact the Somaliland Chamber of Commerce, Industry and Agriculture.

Contact Person:

Mohamed Abdullahi Dirie

Telephone:

+252-2-523143

Email Address:

slcham93@gmail.com

Please send us an e-mail for any request to be included in our mailing list for this monthly report.

Raw data are also available on request using the form on our web site.

For previous issues of this report please visit our web site:

WWW.SOMALILANDCHAMBER.COM

Funded by :



Implemented by:

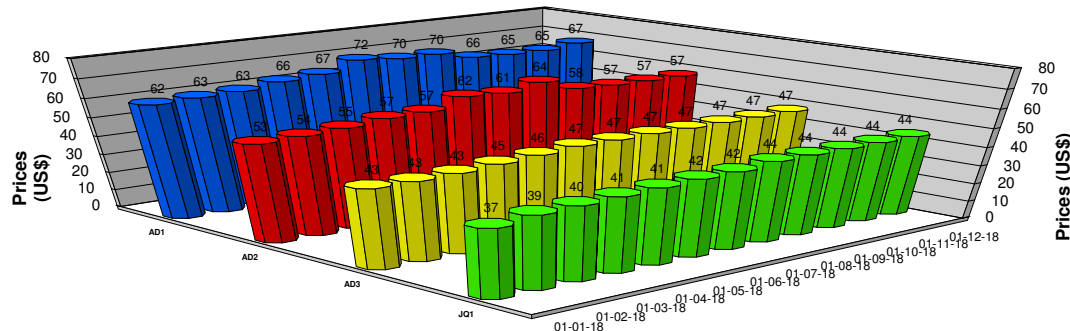


DATA STATISTICALLY VALIDATED

Visit www.somalilandchamber.com for more details

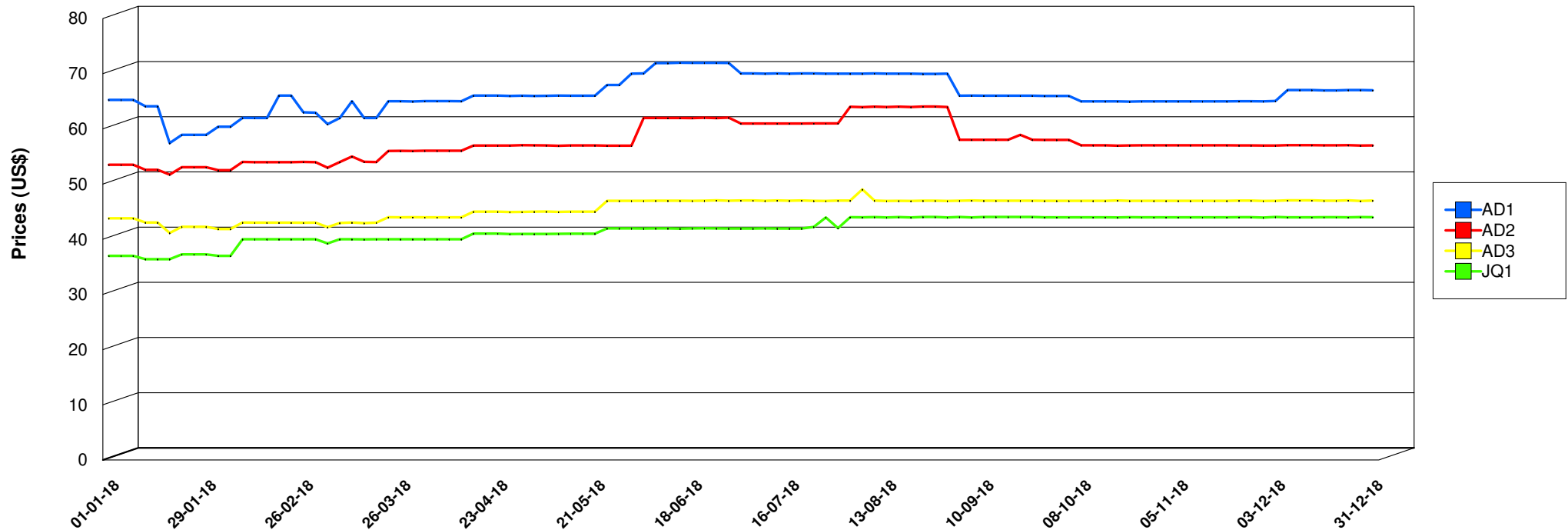


Hargeisa - Small Ruminants Export Quality Prices in USD



Code	Description	Yearly Average Price	Yearly Minimum Price	Yearly Maximum Price
AD1	Small Ruminants Grade 1	66.25	57.43	71.98
AD2	Small Ruminants Grade 2	57.58	51.71	64.04
AD3	Small Ruminants Grade 3	45.68	41.14	49.04
JQ1	Lambs/Kids Grade 1	41.84	36.38	44.04

Note: Prices represent the monthly average of prices from the respective market



* Please refer to the data explanatory key in the first page

DATA STATISTICALLY VALIDATED
Visit www.somalilandchamber.com for more details

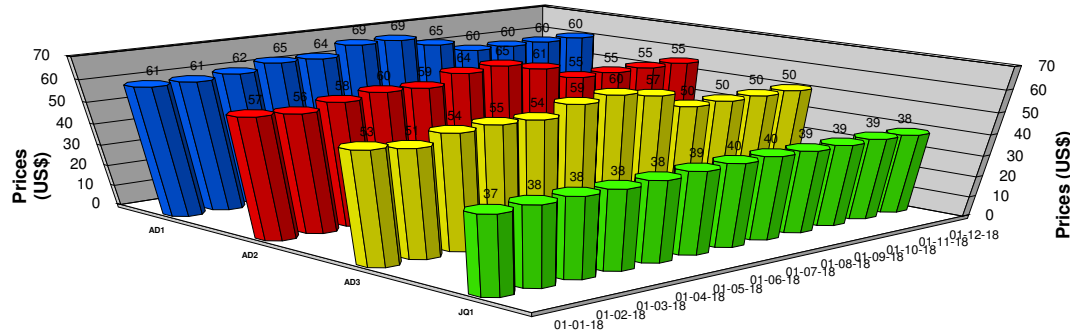


Implemented by:



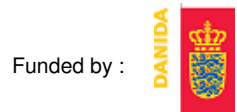
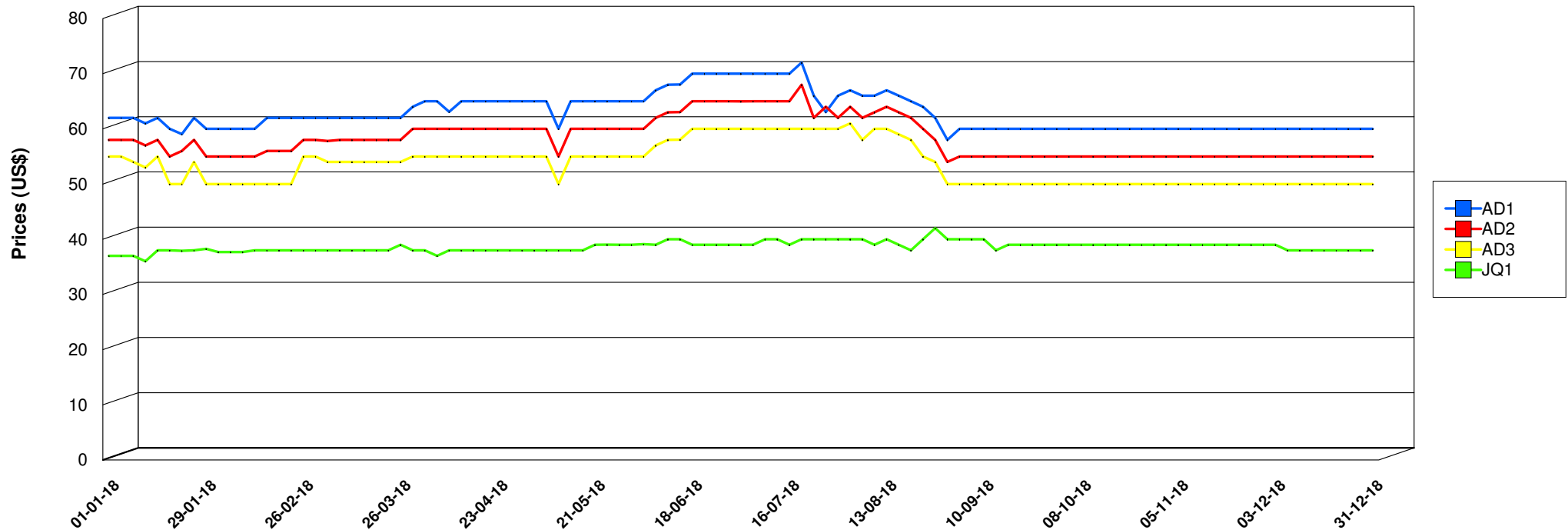


Burao - Small Ruminants Export Quality Prices in USD



Code	Description	Yearly Average Price	Yearly Minimum Price	Yearly Maximum Price
AD1	Small Ruminants Grade 1	62.93	58.00	72.00
AD2	Small Ruminants Grade 2	58.30	54.00	68.00
AD3	Small Ruminants Grade 3	53.59	50.00	61.00
JQ1	Lambs/Kids Grade 1	38.65	36.00	42.00

Note: Prices represent the monthly average of prices from the respective market



Implemented by:



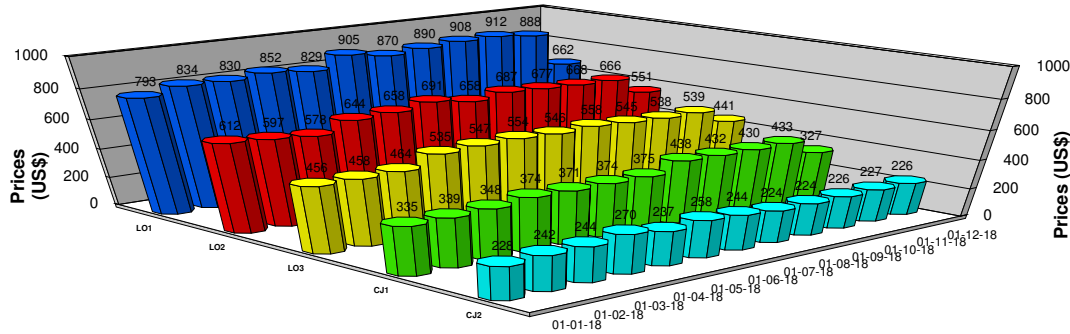
* Please refer to the data explanatory key in the first page

DATA STATISTICALLY VALIDATED

Visit www.somalilandchamber.com for more details

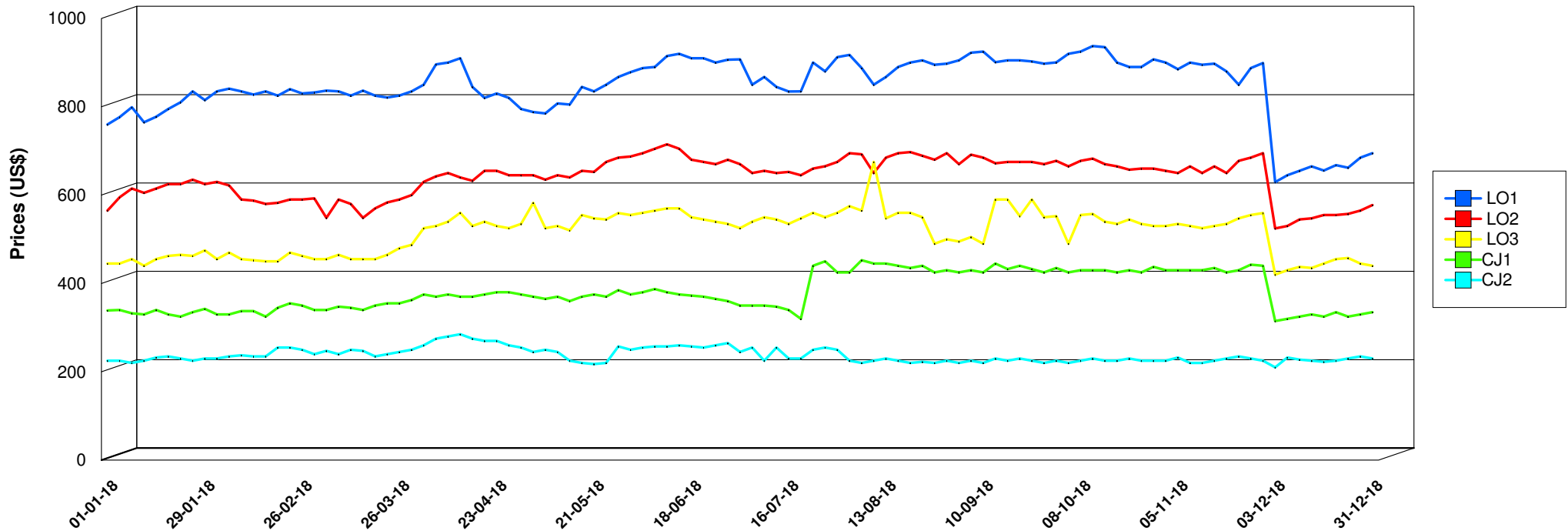


Tog Wajaale - Cattle Export Quality Prices in USD



Note: Prices represent the monthly average of prices from the respective market

Code	Description	Yearly Average Price	Yearly Minimum Price	Yearly Maximum Price
LO1	Cattle Mature GR1	846.71	629.50	937.50
LO2	Cattle Mature GR2	640.00	524.50	715.00
LO3	Cattle Mature GR3	514.87	420.00	675.00
CJ1	Cattle Immature GR1	381.18	315.00	452.50
CJ2	Cattle Immature GR2	237.29	210.00	285.00



* Please refer to the data explanatory key in the first page



Implemented by:

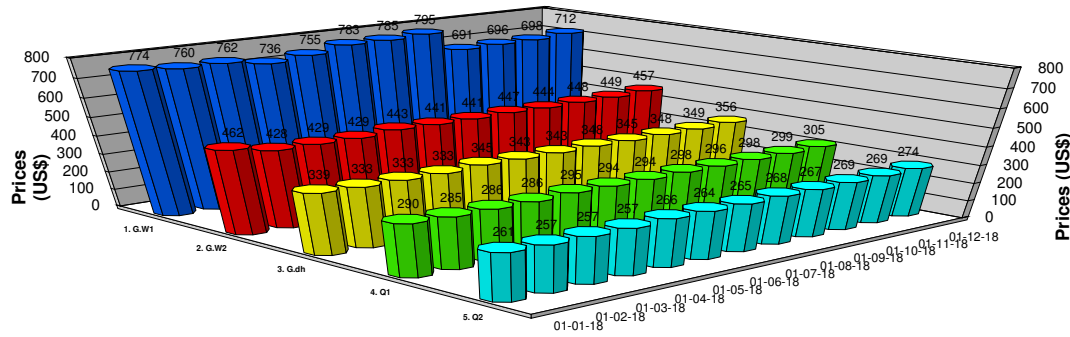


DATA STATISTICALLY VALIDATED

Visit www.somalilandchamber.com for more details

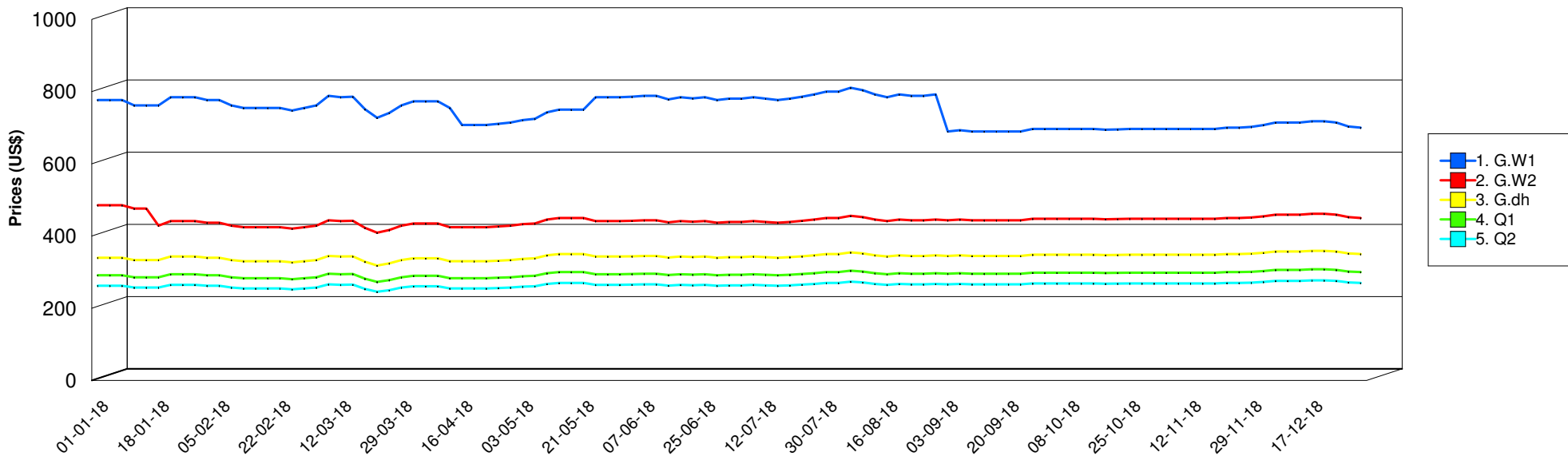


Hargeisa - Camel Export Quality Prices in USD

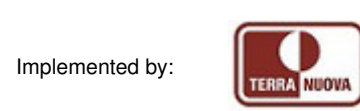


Code	Description	Yearly Average Price	Yearly Minimum Price	Yearly Maximum Price
1. G.W1	Camel Mature GR1	745.49	689.66	810.54
2. G.W2	Camel Mature GR2	443.22	409.09	485.44
3. G.dh	Camel Intermediate	342.94	318.18	358.97
4. Q1	Camel Immature GR1	293.95	272.73	307.69
5. Q2	Camel Immature GR2	264.55	245.45	276.92

Note: Prices represent the monthly average prices from the respective market

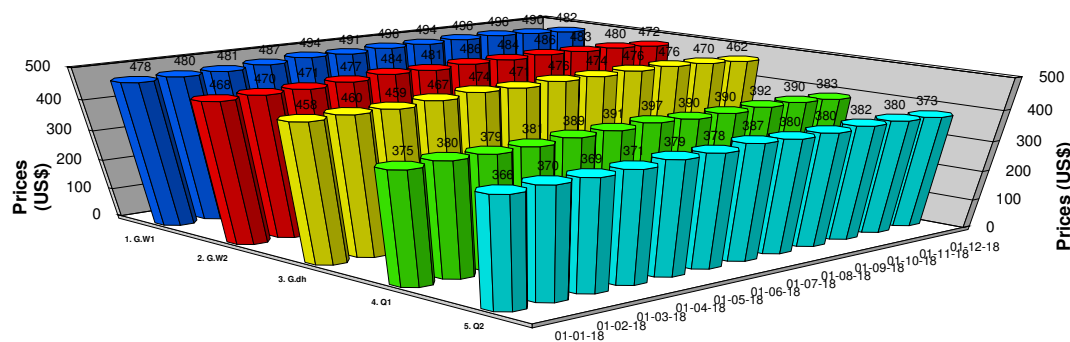


* Please refer to the data explanatory key in the first page



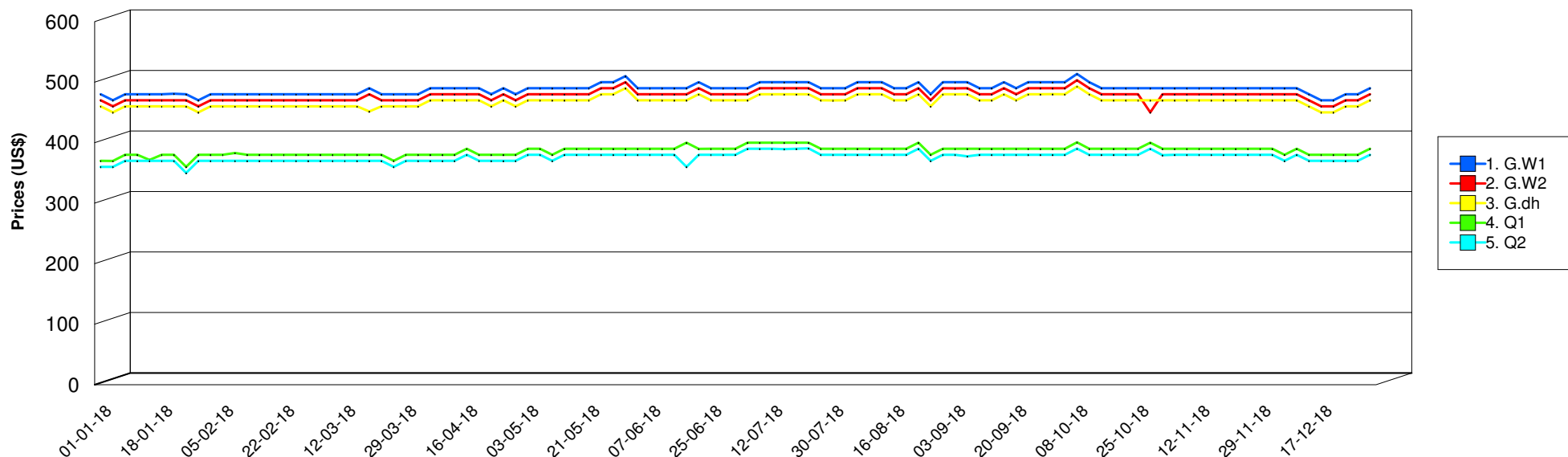


Burao - Camel Export Quality Prices in USD



Code	Description	Yearly Average Price	Yearly Minimum Price	Yearly Maximum Price
1. G.W1	Camel Mature GR1	488.80	470.00	513.46
2. G.W2	Camel Mature GR2	478.51	450.15	503.19
3. G.dh	Camel Intermediate	468.61	450.00	492.92
4. Q1	Camel Immature GR1	386.42	360.00	400.50
5. Q2	Camel Immature GR2	376.16	350.00	390.59

Note: Prices represent the monthly average prices from the respective market



* Please refer to the data explanatory key in the first page



Implemented by:

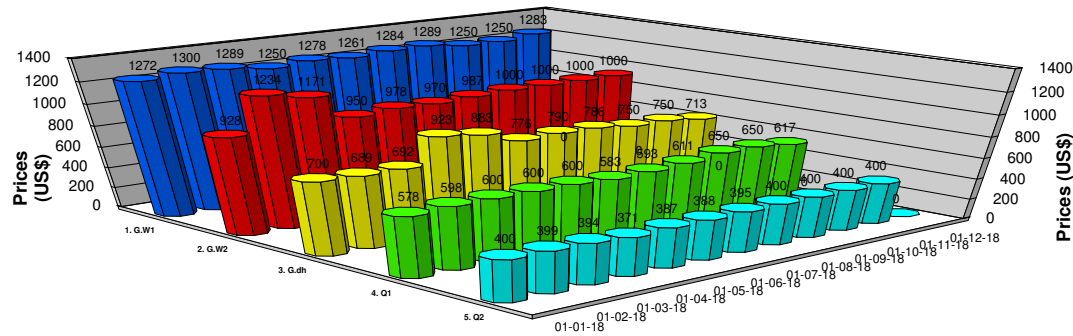


DATA STATISTICALLY VALIDATED

Visit www.somalilandchamber.com for more details

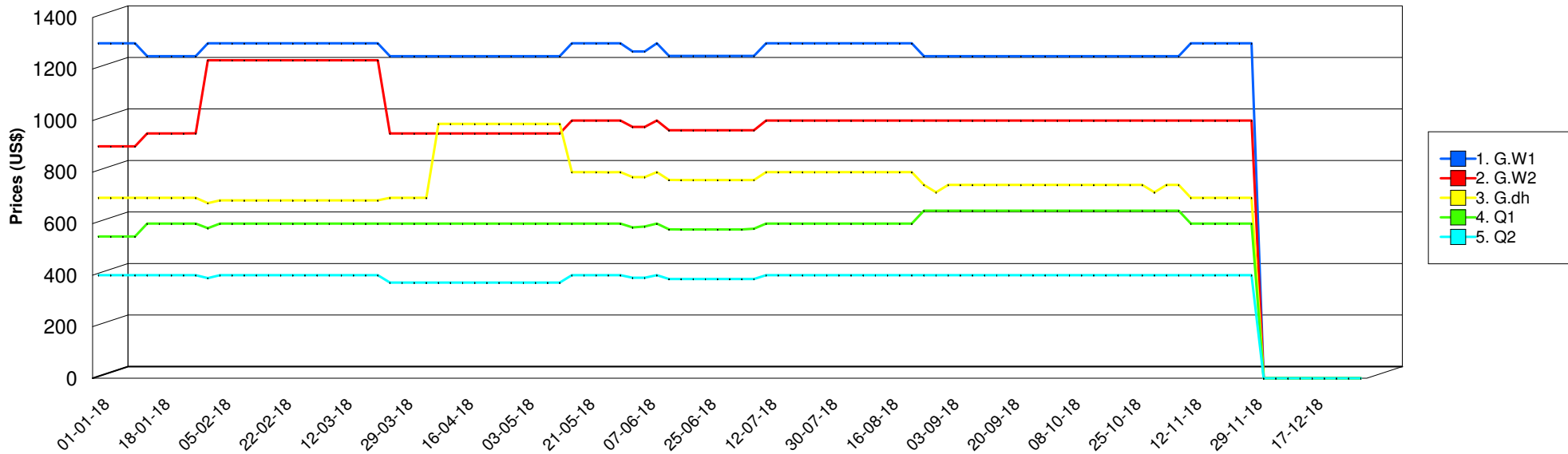


Tog Wajaale - Camel Export Quality Prices in USD



Code	Description	Yearly Average Price	Yearly Minimum Price	Yearly Maximum Price
1. G.W1	Camel Mature GR1	1,164.21	0.00	1,300.00
2. G.W2	Camel Mature GR2	931.05	0.00	1,234.12
3. G.dh	Camel Intermediate	703.40	0.00	987.36
4. Q1	Camel Immature GR1	555.03	0.00	650.00
5. Q2	Camel Immature GR2	360.16	0.00	400.00

Note: Prices represent the monthly average prices from the respective market



* Please refer to the data explanatory key in the first page



Implemented by:

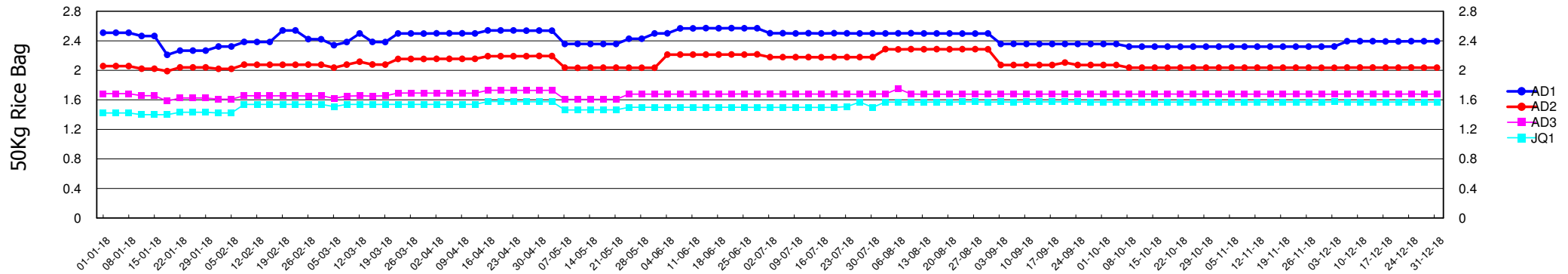


DATA STATISTICALLY VALIDATED

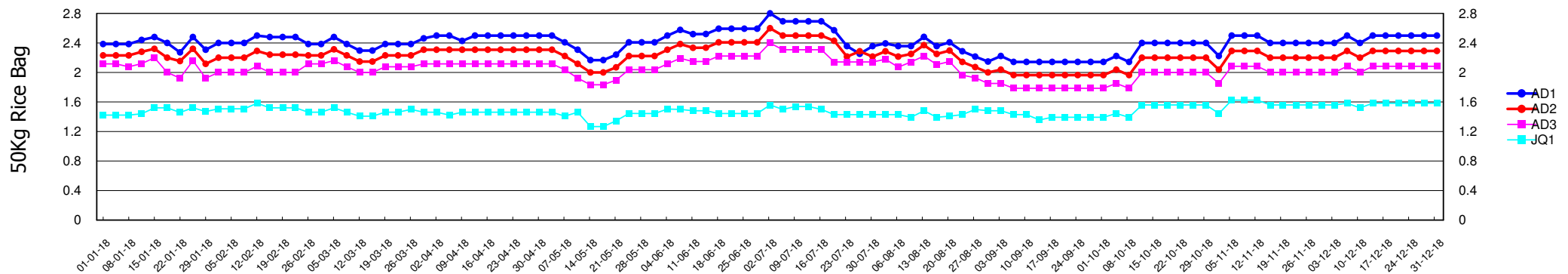
Visit www.somalilandchamber.com for more details



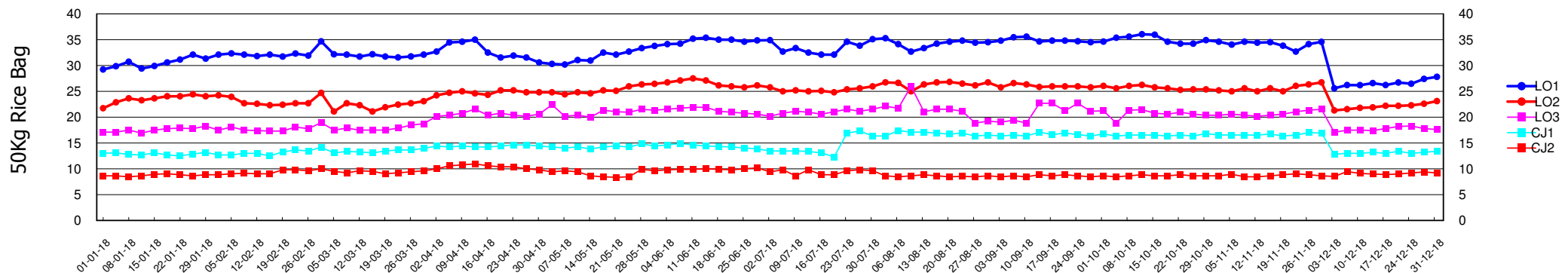
Terms of Trade : Number of 50Kg Rice Bags bought from sale of one export quality small ruminant in Hargeisa



Terms of Trade : Number of 50Kg Rice Bags bought from sale of one export quality small ruminant in Burao



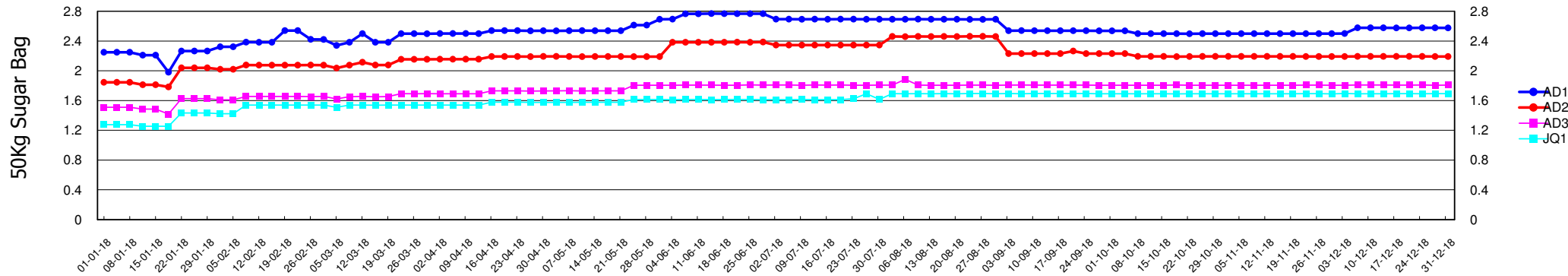
Terms of Trade : Number of 50Kg Rice Bags bought from sale of one export quality cattle in Tog Wajaale



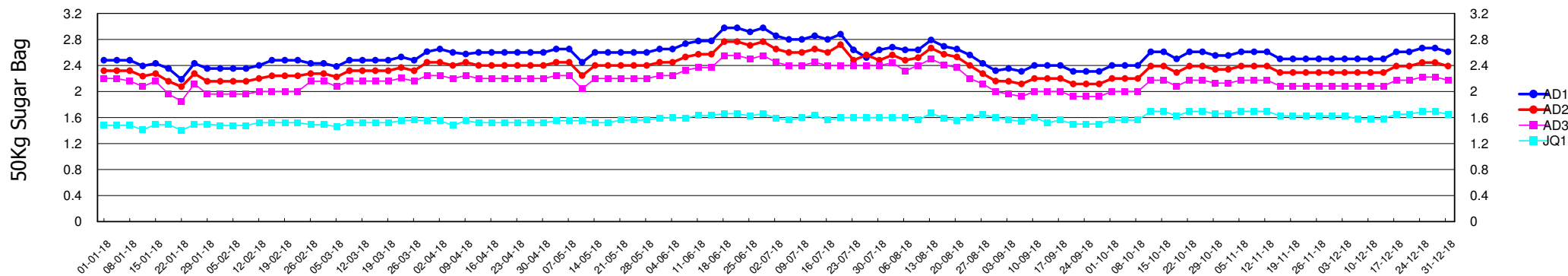
* Please refer to the data explanatory key in the first page



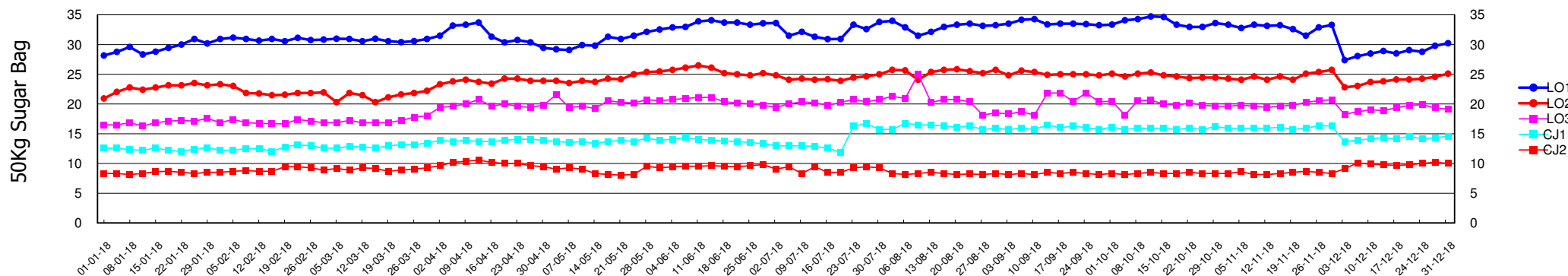
Terms of Trade : Number of 50Kg Sugar Bags bought from sale of one export quality small ruminant in Hargeisa



Terms of Trade : Number of 50Kg Sugar Bags bought from sale of one export quality small ruminant in Burao



Terms of Trade : Number of 50Kg Sugar Bags bought from sale of one export quality cattle in Tog Wajaale



* Please refer to the data explanatory key in the first page



Funded by :

Implemented by:

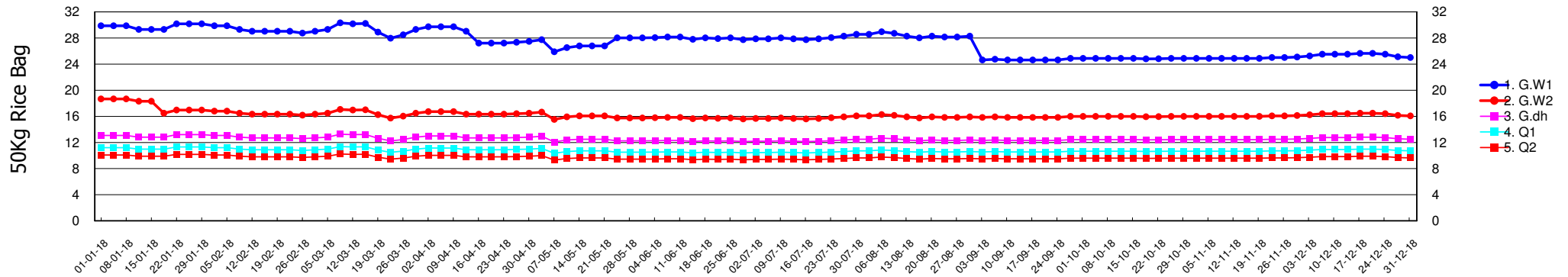


DATA STATISTICALLY VALIDATED

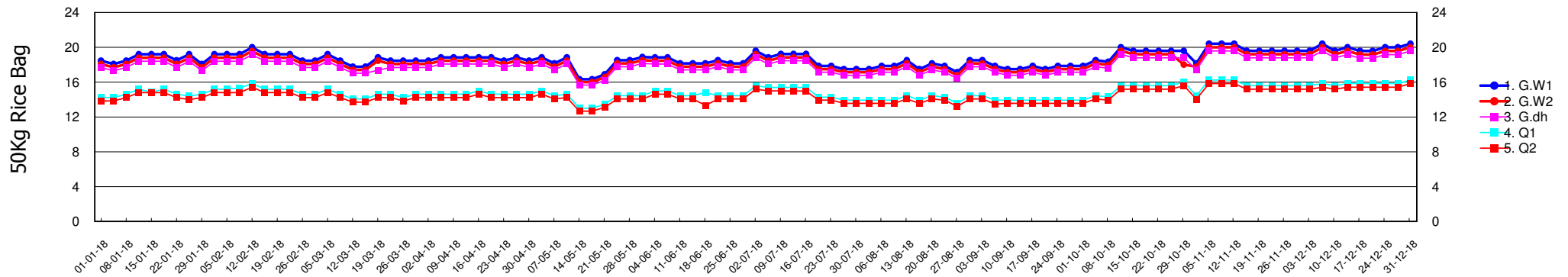
Visit www.somalilandchamber.com for more details



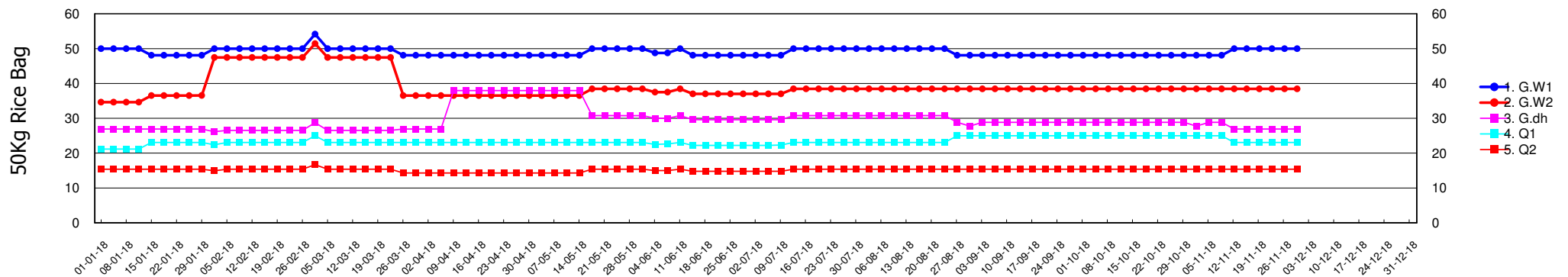
Terms of Trade : Number of 50Kg Rice Bags bought from sale of one export quality camel in Hargeisa



Terms of Trade : Number of 50Kg Rice Bags bought from sale of one export quality camel in Burao



Terms of Trade : Number of 50Kg Rice Bags bought from sale of one export quality camel in Tog Wajaale



* Please refer to the data explanatory key in the first page



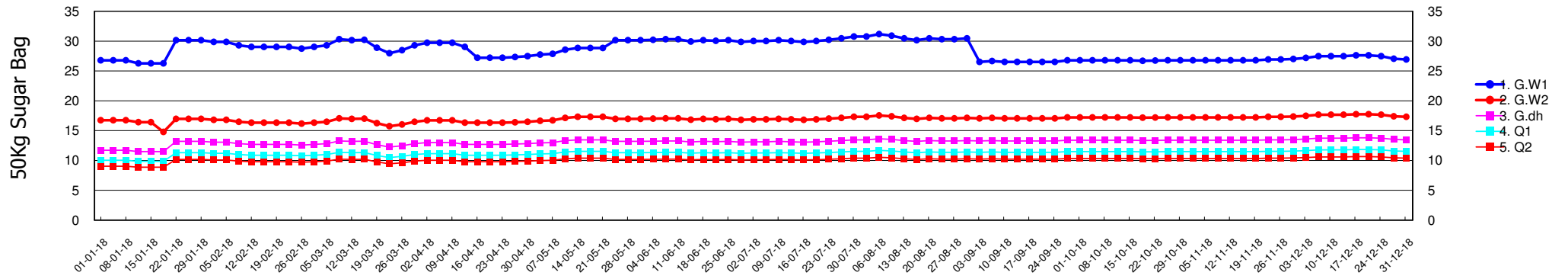
Implemented by:



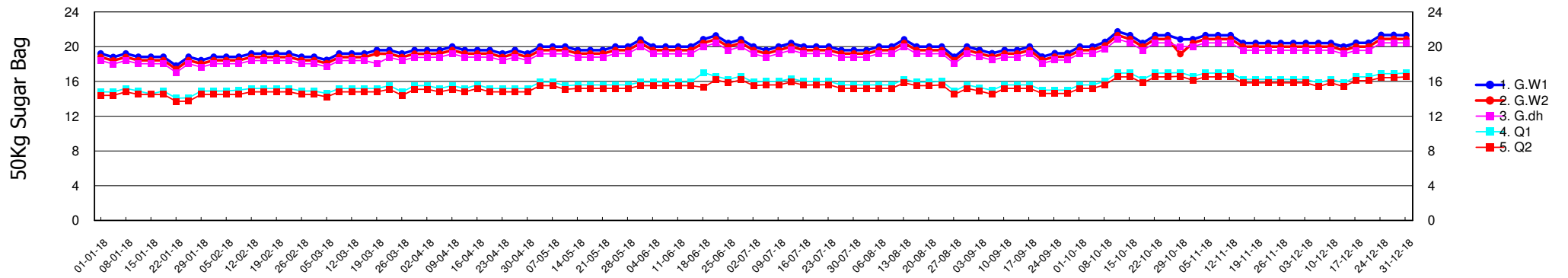
DATA STATISTICALLY VALIDATED

Visit www.somalilandchamber.com for more details

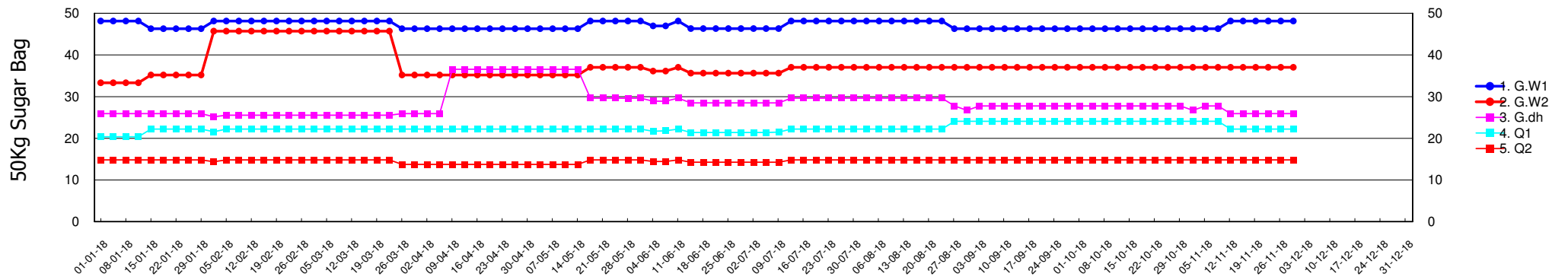
Terms of Trade : Number of 50Kg Sugar Bags bought from sale of one export quality camel in Hargeisa



Terms of Trade : Number of 50Kg Sugar Bags bought from sale of one export quality camel in Burao



Terms of Trade : Number of 50Kg Sugar Bags bought from sale of one export quality camel in Tog Wajaale

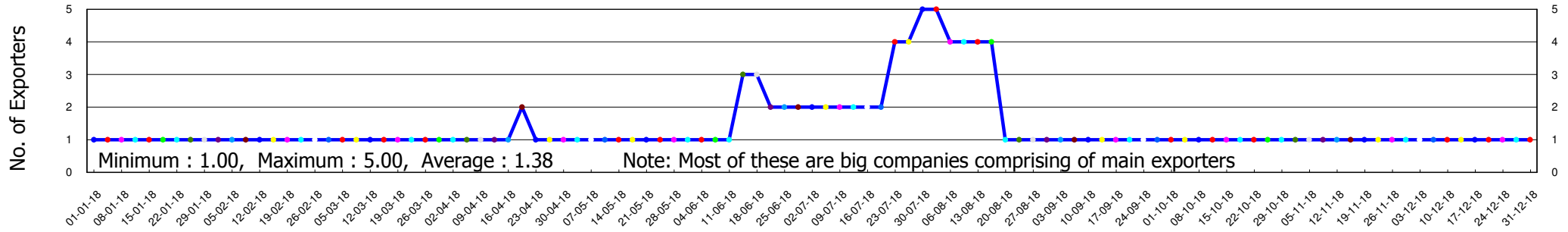


* Please refer to the data explanatory key in the first page

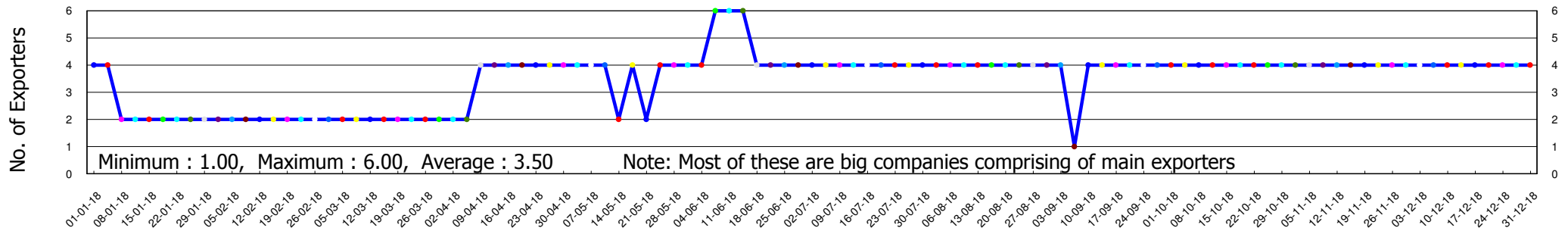
DATA STATISTICALLY VALIDATED
 Visit www.somalilandchamber.com for more details



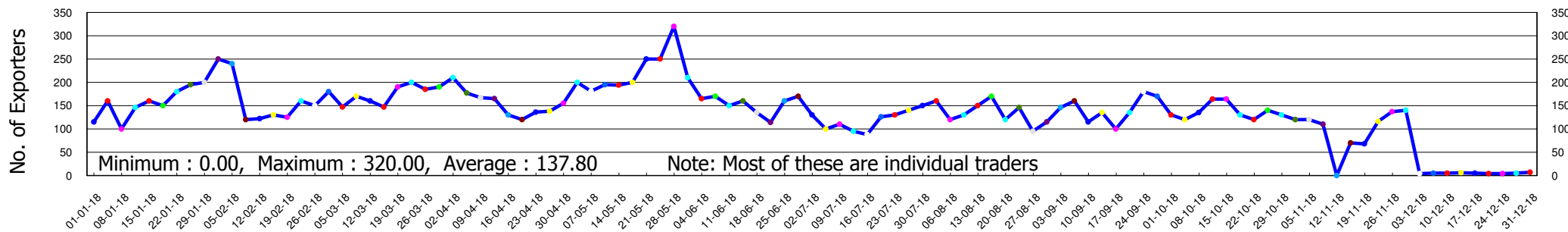
Hargeisa - Number of Exporters Present in the Market



Burao - Number of Exporters Present in the Market



Tog Wajaale - Number of Exporters Present in the Market



* Please refer to the data explanatory key in the first page

Funded by :



Implemented by:

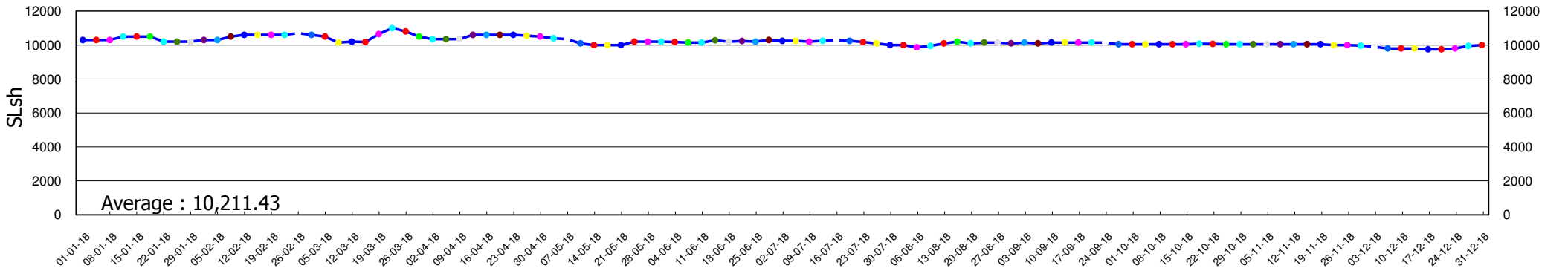


DATA STATISTICALLY VALIDATED

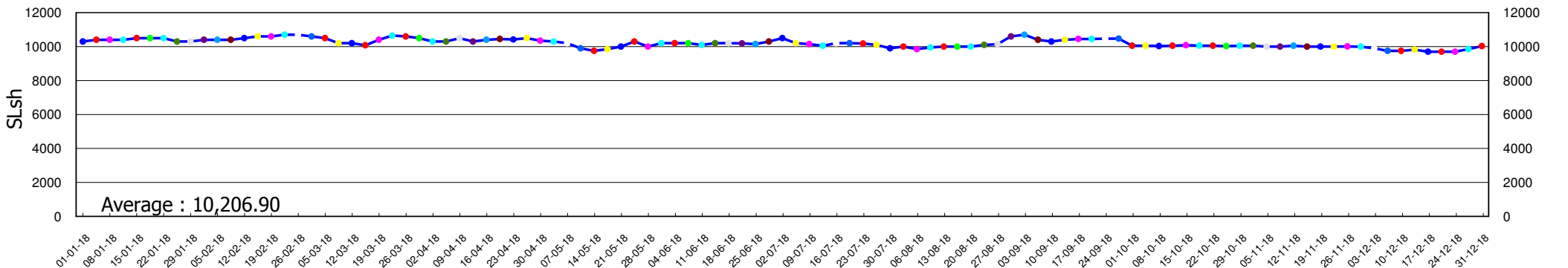
Visit www.somalilandchamber.com for more details



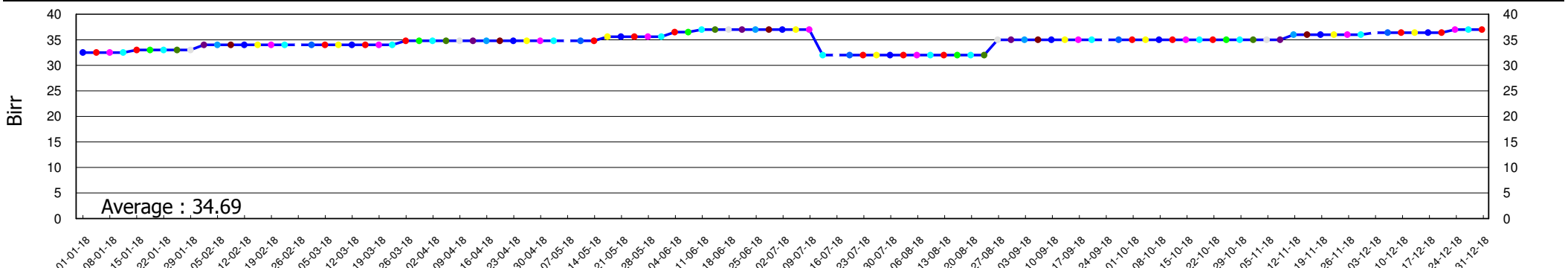
Hargeisa - Currency Exchange Rates for 1US\$ to SLsh



Burao - Currency Exchange Rates for 1US\$ to SLsh



Tog Wajaale - Currency Exchange Rates for 1US\$ to Birr



* Please refer to the data explanatory key in the first page

Funded by :



Implemented by:

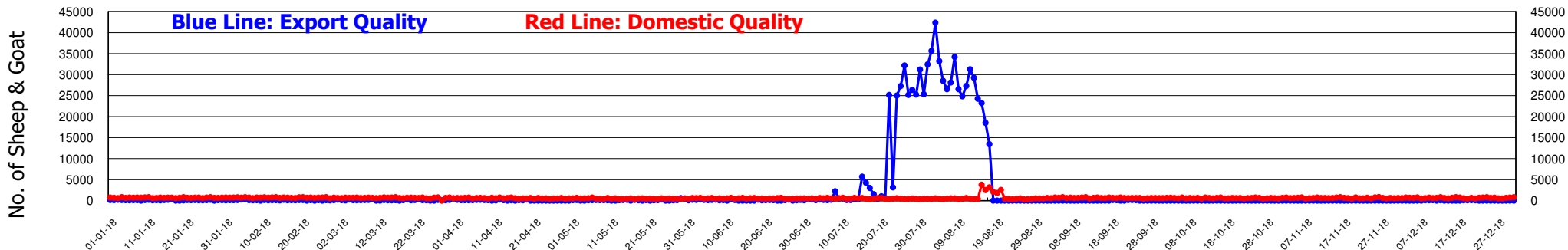


DATA STATISTICALLY VALIDATED

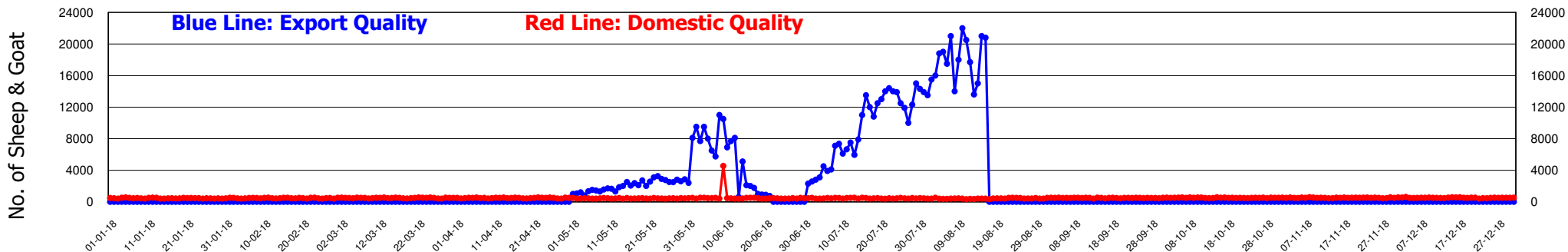
Visit www.somalilandchamber.com for more details



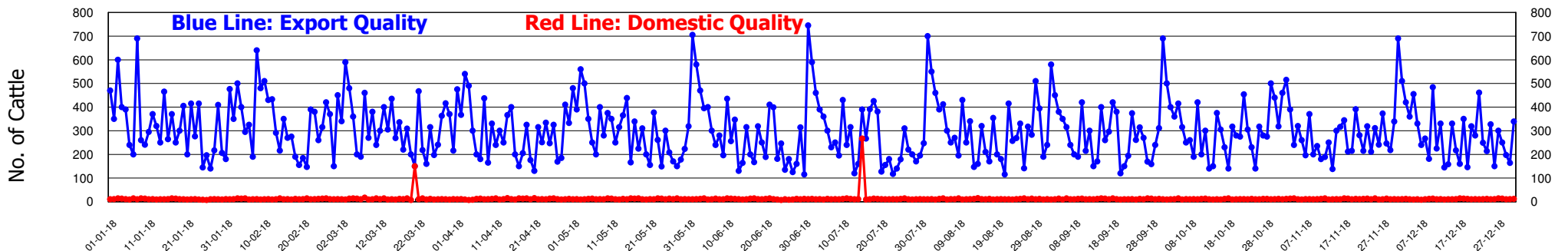
Hargeisa - Number of Sheep & Goats Marketed (Export & Domestic Quality) in the period



Burao - Number of Sheep & Goats Marketed (Export & Domestic Quality) in the period



Tog Wajaale - Number of Cattle Marketed (Export & Domestic Quality) in the period

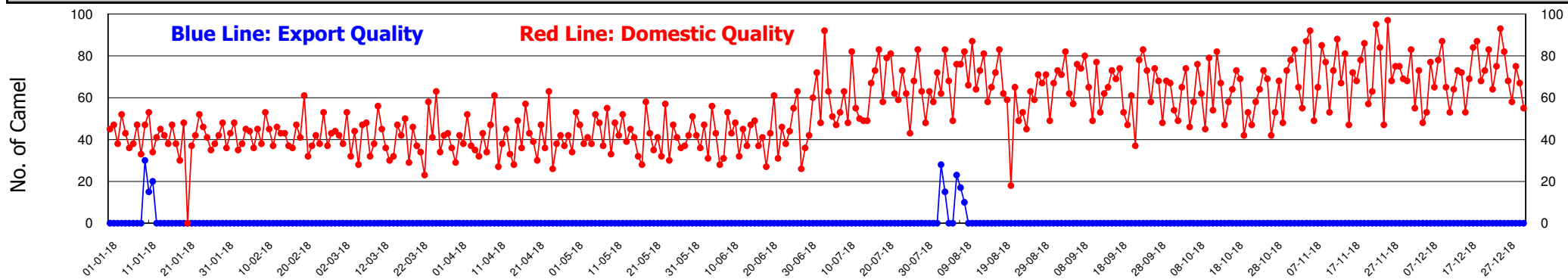


* Please refer to the data explanatory key in the first page

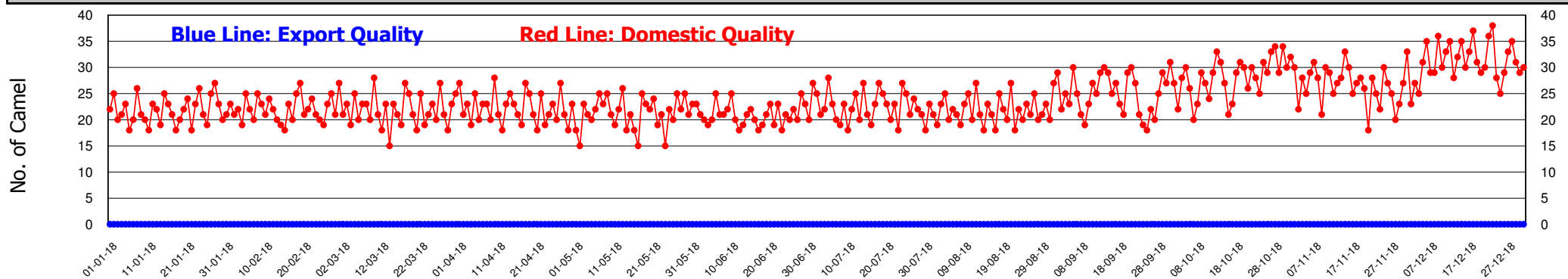




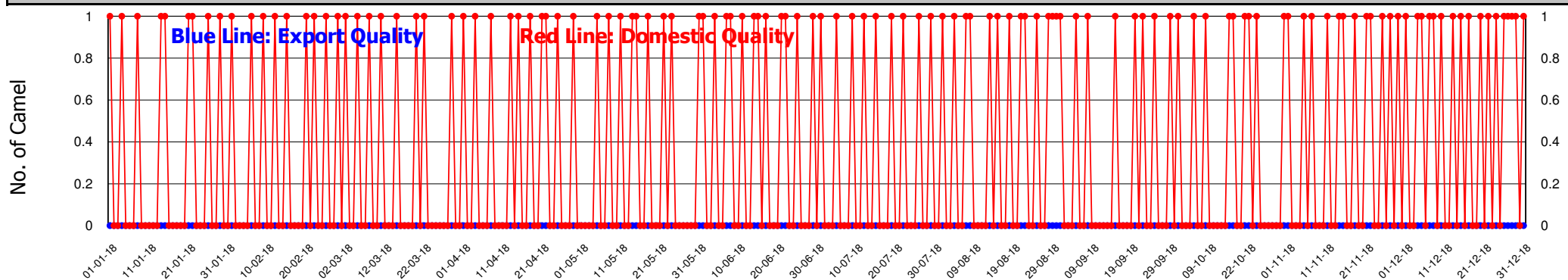
Hargeisa - Number of Camels Marketed (Export & Domestic Quality) in the period



Burao - Number of Camels Marketed (Export & Domestic Quality) in the period



Tog Wajaale - Number of Camels Marketed (Export & Domestic Quality) in the period



* Please refer to the data explanatory key in the first page





Hargeisa - Total Number of Animals Marketed (Export & Domestic Quality) Blue Values: Export Quality Red Values: Domestic Quality

	Jan-18	Feb-18	Mar-18	Apr-18	May-18	Jun-18	Jul-18	Aug-18	Sep-18	Oct-18	Nov-18	Dec-18	Total
No. of Camels	65	0	0	0	0	0	0	93	0	0	0	0	158
	1,259	1,187	1,255	1,211	1,319	1,258	1,947	2,006	1,977	1,879	2,179	2,168	19,645
No. of Sheep & Goats	3,462	2,978	4,040	2,141	3,375	3,153	267,934	479,431	635	0	0	646	767,795
	21,185	19,625	19,485	16,587	14,522	15,499	15,011	26,715	18,951	18,122	18,677	19,804	224,183

Burao - Total Number of Animals Marketed (Export & Domestic Quality) Blue Values: Export Quality Red Values: Domestic Quality

	Jan-18	Feb-18	Mar-18	Apr-18	May-18	Jun-18	Jul-18	Aug-18	Sep-18	Oct-18	Nov-18	Dec-18	Total
No. of Camels	0	0	0	0	0	0	0	0	0	0	0	0	0
	674	615	682	667	659	629	700	673	747	870	799	965	8,680
No. of Sheep & Goats	0	0	0	0	63,565	114,350	290,810	283,900	0	0	0	0	752,625
	14,057	12,941	15,095	14,500	13,427	17,504	13,785	12,845	14,592	15,745	15,303	15,827	175,621

Tog Wajaale - Total Number of Animals Marketed (Export & Domestic Quality) Blue Values: Export Quality Red Values: Domestic Quality

	Jan-18	Feb-18	Mar-18	Apr-18	May-18	Jun-18	Jul-18	Aug-18	Sep-18	Oct-18	Nov-18	Dec-18	Total
No. of Camels	0	0	0	0	0	0	0	0	0	0	0	0	0
	9	9	8	10	9	12	9	13	8	9	12	17	125
No. of Cattle	9,929	9,392	9,847	8,795	9,232	8,603	8,879	9,509	8,518	9,771	8,475	9,248	110,198
	333	313	483	338	351	330	594	341	336	334	339	340	4,432



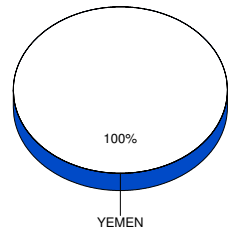
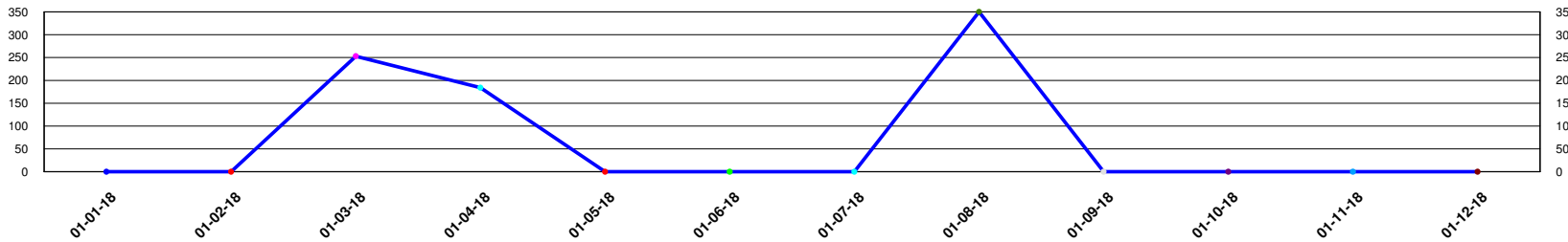


Total number of heads exported from Berbera port (Source: Berbera Port Authority)

	Jan-18	Feb-18	Mar-18	Apr-18	May-18	Jun-18	Jul-18	Aug-18	Sep-18	Oct-18	Nov-18	Dec-18	Total
Camels	0	0	253	184	0	0	0	350	0	0	0	0	787
Cattle	9,619	10,424	6,792	8,659	7,479	13,735	4,770	11,426	6,319	2,196	9,166	13,352	103,937
Sheep & Goats	7,928	23,160	13,262	8,546	23,488	83,363	251,422	850,455	1,586	5,220	7,731	9,146	1,285,307
Total	17,547	33,584	20,307	17,389	30,967	97,098	256,192	862,231	7,905	7,416	16,897	22,498	1,390,031

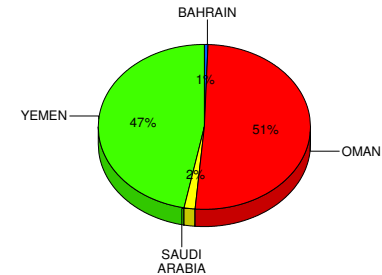
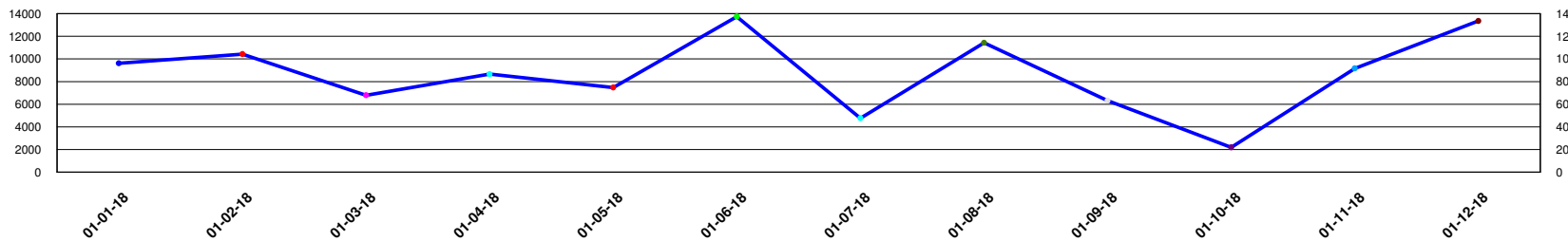
Number of Camels exported and percentage according to country of destination

0.06%



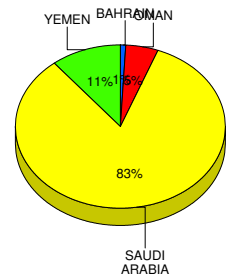
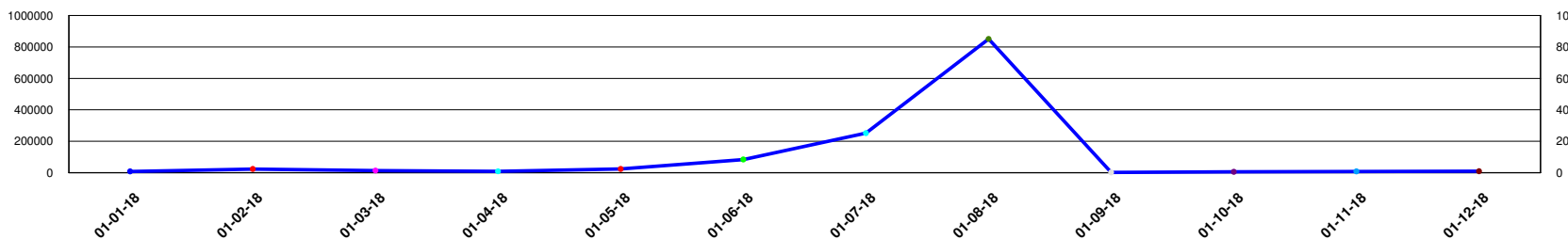
Number of Cattle exported and percentage according to country of destination

7.48%



Number of Sheep & Goats exported and percentage according to country of destination

92.47%



Funded by :

Implemented by :



* Please refer to the data explanatory key in the first page

DATA STATISTICALLY VALIDATED

Visit www.somalilandchamber.com for more details



Livestock exported to BAHRAIN from Berbera port according to vessel capacity & destinations (Source: Berbera Port Authority)

Vessel Name	Ship Capacity (In Tons)	Trips Made	Total Shoats	Total Cattle	Total Camels	Total Heads
S/K AL YOUSUB	780	1	800	349	0	1,149
S/K AMIR ALI	880	1	2,000	249	0	2,249
S/K AL AQSA	711	1	4,200	0	0	4,200
S/K FUTTAIM	782	1	4,960	0	0	4,960
Sub Total :			11,960	598	0	12,558

Livestock exported to OMAN from Berbera port according to vessel capacity & destinations (Source: Berbera Port Authority)

Vessel Name	Ship Capacity (In Tons)	Trips Made	Total Shoats	Total Cattle	Total Camels	Total Heads
S/K YAKUUB	745	1	0	498	0	498
S/K ALI MADAT	666	3	5,000	997	0	5,997
S/K ARABIAN STAR	700	1	0	498	0	498
S/K ASHRA	560	1	0	450	0	450
S/K CT.201	717	1	0	514	0	514
S/K DAHA	450	2	491	694	0	1,185
S/K DAYIBAH	702	3	0	1,559	0	1,559
S/K DAYIBO	610	1	0	479	0	479
S/K DEVI CRUPA	849	1	0	500	0	500
S/K MANSHA ALAH	540	3	0	1,510	0	1,510
S/K FAIZ HASHIMI	890	1	0	505	0	505
S/K AL SHIRAZI	800	1	0	500	0	500
S/K GOSE AAZAM	720	5	4,205	1,963	0	6,168
S/K GOSHA AWLIYO	650	2	0	1,000	0	1,000
S/K GULSHAN KADER	800	1	0	492	0	492
S/K HARUUN	420	1	0	500	0	500
S/K HASSEN	881	1	0	499	0	499
S/K HIJRAT	800	2	0	999	0	999

* Please refer to the data explanatory key in the first page



Livestock exported to OMAN from Berbera port according to vessel capacity & destinations (Source: Berbera Port Authority)

Vessel Name	Ship Capacity (In Tons)	Trips Made	Total Shoats	Total Cattle	Total Camels	Total Heads
S/K JUERI	665	1	0	500	0	500
S/K KOSHAH	706	1	0	499	0	499
S/K FAIS NOORI SULEIMANI	820	1	0	520	0	520
S/K AL MAZUM	715	1	0	500	0	500
M/V FAHED	2,511	1	0	1,836	0	1,836
M/V NOBA 1	926	1	1,638	1,316	0	2,954
S/K AL ABID	610	1	0	498	0	498
S/K AL AMIIR	420	1	0	640	0	640
S/K AL AMIIR 2	875	2	0	1,000	0	1,000
S/K AL AMINA	850	1	4,840	0	0	4,840
S/K AL AQSA	711	1	0	500	0	500
S/K AL BUKHUL	710	1	0	495	0	495
S/K AL DAHAB	2,100	2	0	1,000	0	1,000
S/K AL YASIIN	450	1	0	400	0	400
S/K AL JUBERI	755	1	0	496	0	496
S/K AL SULDAN AKBAR	626	1	0	493	0	493
S/K AL MOHAMED	689	1	0	500	0	500
S/K AL MUBARIK	570	1	0	499	0	499
S/K AL MUKHTARI	850	1	0	511	0	511
S/K AL MUNIR	670	2	0	1,141	0	1,141
S/K AL NOMAN	994	1	0	499	0	499
S/K AL OMER	975	1	0	500	0	500
S/K AL SABA	785	1	0	496	0	496
S/K AL SAFAH	809	1	0	498	0	498
S/K AL SALMA	870	1	0	498	0	498
S/K FALLASI	711	1	0	500	0	500
S/K AL HASSAN	850	2	0	991	0	991
S/K SULTAN AL KARIM	654	1	0	500	0	500
S/K WAHIIBA	710	1	0	500	0	500
S/K NOORE AL AMINA	770	2	9,604	0	0	9,604
S/K NOORE MARYAM	690	1	0	500	0	500

Livestock exported to OMAN from Berbera port according to vessel capacity & destinations (Source: Berbera Port Authority)

Vessel Name	Ship Capacity (In Tons)	Trips Made	Total Shoats	Total Cattle	Total Camels	Total Heads
S/K SHAHI MOHUYUDIIN	850	1	0	499	0	499
S/K SHAHI AL KASIM	888	1	0	500	0	500
S/K NOORE SALAM	980	1	0	494	0	494
S/K NOORENI DASTAGIR	789	2	0	983	0	983
S/K NABAWAT NOURI	776	1	0	525	0	525
S/K SHAHE MADINA	712	1	0	477	0	477
S/K SHAHI SABIR	400	2	0	1,000	0	1,000
S/K FAIZ BAQDADI	761	1	0	512	0	512
S/K SEA QUEEN	690	1	0	500	0	500
S/K NOUR OSMANI	870	1	0	500	0	500
S/K RAHMAT	710	3	0	1,496	0	1,496
S/K SAGAR SAMRAT	500	1	0	497	0	497
S/K SAFA	680	2	5,150	500	0	5,650
S/K SAFA 2	890	1	5,200	0	0	5,200
S/K SHAHE F. NOOR 1	750	1	0	497	0	497
S/K MOHAMMED	790	2	0	983	0	983
S/K MARWAH	850	1	3,500	0	0	3,500
S/K SUHUUR 1	780	1	0	503	0	503
S/K SULTAN MOHUTADIIN	1,021	1	4,969	0	0	4,969
S/K MARWO	688	1	0	500	0	500
S/K TALAAT	1,109	2	0	1,005	0	1,005
S/K SHREE SHIVE SHAKTI	557	2	0	927	0	927
S/K SHER SABER	710	1	0	520	0	520
S/K NOORA AL ISLAM	556	2	0	1,000	0	1,000
S/K TOWFIQ 1	777	2	0	976	0	976
S/K NOORI SULEIMANI	600	5	4,165	1,995	0	6,160
S/K MOHBOOB	550	1	0	522	0	522
S/K MOHBUB MUHUYADIIN	787	1	5,000	0	0	5,000
S/K WALIID	820	2	0	1,000	0	1,000
S/K MUKHDHUM B	780	1	0	455	0	455
S/K MUKHDUM	687	1	5,000	0	0	5,000

Livestock exported to OMAN from Berbera port according to vessel capacity & destinations (Source: Berbera Port Authority)

Vessel Name	Ship Capacity (In Tons)	Trips Made	Total Shoats	Total Cattle	Total Camels	Total Heads
S/K MEHRAAB	865	2	4,542	504	0	5,046
Sub Total :			63,304	52,853	0	116,157

Livestock exported to SAUDI ARABIA from Berbera port according to vessel capacity & destinations (Source: Berbera Port Authority)

Vessel Name	Ship Capacity (In Tons)	Trips Made	Total Shoats	Total Cattle	Total Camels	Total Heads
M/V TRUST 1	2,973	3	75,326	0	0	75,326
M/V TAIBA	4,033	3	139,000	0	0	139,000
M/V HAJH GHSNJ	2,105	2	65,000	0	0	65,000
M/V ASADADIIN	1,034	1	5,104	1,050	0	6,154
M/V BARAKAAT	2,547	2	24,305	0	0	24,305
M/V BARAKO 1	4,605	2	71,000	0	0	71,000
M/V BARAKO 3	4,182	3	60,795	0	0	60,795
M/V BARAKO 5	15,575	2	128,500	0	0	128,500
M/V BARAKO 7	1,202	3	62,200	0	0	62,200
M/V ADEEN 1	2,330	1	20,000	0	0	20,000
M/V NADER-A	2,501	3	61,603	0	0	61,603
M/V HAMZA	811	1	4,561	615	0	5,176
M/V LILY J	6,415	3	196,000	0	0	196,000
M/V MABROUKA 10	1,055	2	33,000	0	0	33,000
M/V MALAK 1	2,332	1	19,025	0	0	19,025
M/V MUWAFaq	2,219	1	23,000	0	0	23,000
M/V FAHED	2,511	4	82,684	0	0	82,684
Sub Total :			1,071,103	1,665	0	1,072,768

Livestock exported to YEMEN from Berbera port according to vessel capacity & destinations (Source: Berbera Port Authority)

Vessel Name	Ship Capacity (In Tons)	Trips Made	Total Shoats	Total Cattle	Total Camels	Total Heads
M/V HAMZA	811	8	18,731	6,323	0	25,054

Livestock exported to YEMEN from Berbera port according to vessel capacity & destinations (Source: Berbera Port Authority)

Vessel Name	Ship Capacity (In Tons)	Trips Made	Total Shoats	Total Cattle	Total Camels	Total Heads
M/V NOBA 2	1,046	13	27,980	16,280	0	44,260
M/V NOBA 1	926	15	30,676	15,177	0	45,853
M/V ASADADIIN	1,034	4	11,944	3,984	0	15,928
S/K NOORI ZAMUDINI	800	1	0	500	0	500
S/K MADAF	890	1	1,020	0	0	1,020
S/K MARWAH	850	3	7,099	455	0	7,554
S/K MATAFI	670	4	5,814	729	0	6,543
S/K MATUF	540	1	1,037	348	0	1,385
S/K HARUUN	420	1	502	251	0	753
S/K HAJI QASIN	800	1	3,272	167	0	3,439
S/K GOSE AAZAM	720	1	324	215	0	539
S/K MUFATAF	550	1	1,000	200	0	1,200
S/K FATHUL KHAIR	666	1	0	180	0	180
S/K DAHA	450	2	1,483	410	0	1,893
S/K NOORE NABUWAT	870	1	3,884	145	0	4,029
S/K AL MUNIR	670	1	0	500	0	500
S/K NOORI SULEIMANI	600	1	2,500	270	0	2,770
S/K SULTAN AL KARIM	654	1	0	0	253	253
S/K AL YASIIN	450	1	3,200	0	0	3,200
S/K SAEEDA	550	2	2,600	160	0	2,760
S/K AL SAEED 2	750	1	617	257	0	874
S/K AL SAEED	550	2	925	511	0	1,436
S/K MANSHA ALAH	540	1	2,000	0	0	2,000
S/K SEILA 1	800	1	975	0	350	1,325
S/K AL KASIMI	690	1	315	251	0	566
S/K SHARIIF	450	1	112	212	0	324
S/K AL HASSAN	850	2	7,790	179	0	7,969
S/K SIMNAM	799	1	0	560	0	560
S/K AL BASIL 1	787	2	2,165	557	0	2,722
S/K NOORI ISMAILI	540	1	975	0	184	1,159

		Sub Total :	138,940	48,821
				787
				188,548

Grand Total : 1,285,307 103,937 787 1,390,031



* Please refer to the data explanatory key in the first page

DATA STATISTICALLY VALIDATED

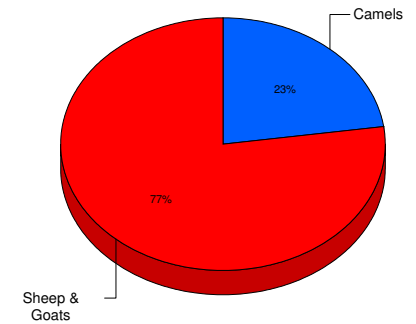
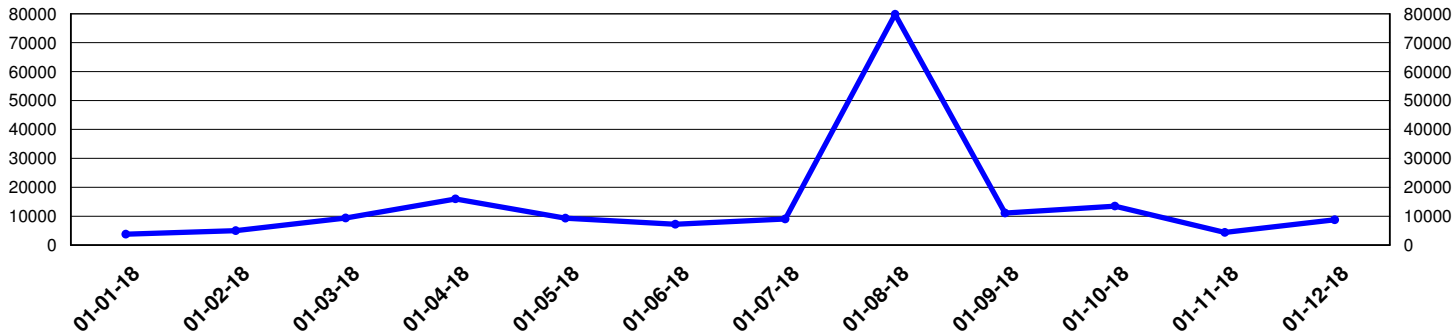
Visit www.somalilandchamber.com for more details



Cross Border Trade with Djibouti through Lowya-Caddo (Source: Lowya-Caddo Customs Office)

	Jan-18	Feb-18	Mar-18	Apr-18	May-18	Jun-18	Jul-18	Aug-18	Sep-18	Oct-18	Nov-18	Dec-18	Total
Camels	1,380	3,130	2,340	2,395	912	537	565	825	9,586	11,541	3,310	4,056	40,577
Sheep & Goats	2,385	1,865	7,039	13,586	8,408	6,668	8,471	78,995	1,480	1,939	1,090	4,700	136,626
Total	3,765	4,995	9,379	15,981	9,320	7,205	9,036	79,820	11,066	13,480	4,400	8,756	177,203

Total Number of Animals Exported to Djibouti through Lowya Caddo during the period



Funded by :

Implemented by:



* Please refer to the data explanatory key in the first page

DATA STATISTICALLY VALIDATED

Visit www.somalilandchamber.com for more details

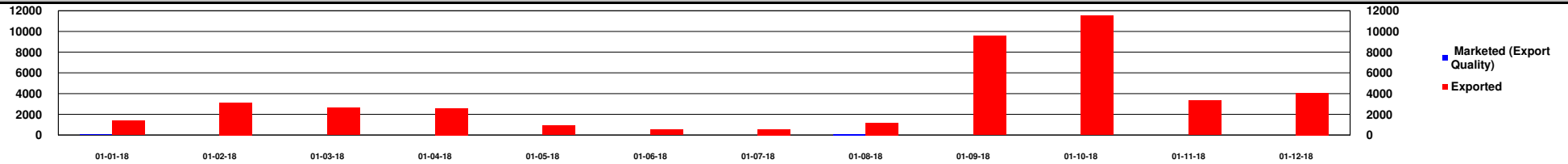


Comparison of monthly quantities of different species marketed (Export Quality Sheep, Goats and Camels in Hargeisa and Burao; Cattle & Camels in Tog Wajaale) and **Exported

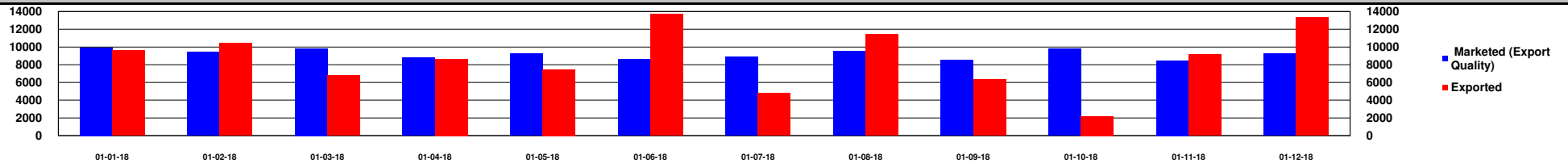
		Jan - 2018	Feb - 2018	Mar - 2018	Apr - 2018	May - 2018	Jun - 2018	Jul - 2018	Aug - 2018	Sep - 2018	Oct - 2018	Nov - 2018	Dec - 2018	Total Quantities
Camels	Marketed (Export Quality)	65							93					158
	Exported	1,380	3,130	2,593	2,579	912	537	565	1,175	9,586	11,541	3,310	4,056	41,364
Cattle	Marketed (Export Quality)	9,929	9,392	9,847	8,795	9,232	8,603	8,879	9,509	8,518	9,771	8,475	9,248	110,198
	Exported	9,619	10,424	6,792	8,659	7,479	13,735	4,770	11,426	6,319	2,196	9,166	13,352	103,937
Sheep & Goats	Marketed (Export Quality)	3,462	2,978	4,040	2,141	66,940	117,503	558,744	763,331	635			646	1,520,420
	Exported	10,313	25,025	20,301	22,132	31,896	90,031	259,893	929,450	3,066	7,159	8,821	13,846	1,421,933

**** Exported : Number of Animal Exported through Berbera Port and Lowya-Caddo**

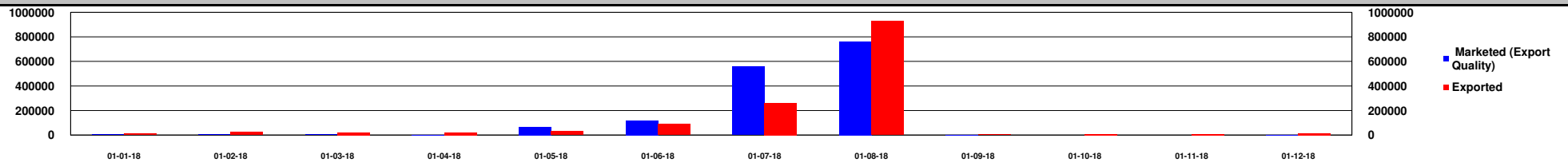
Comparison of monthly quantities of Camels Marketed (Export Quality in Hargeisa, Burao and Tog Wajaale) and **Exported



Comparison of monthly quantities of Cattle Marketed (Export Quality in Tog Wajaale) and **Exported



Comparison of monthly quantities of Sheep & Goats Marketed (Export Quality in Hargeisa and Burao) and **Exported





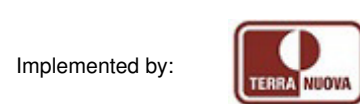
Somaliland Chamber of Commerce, Industry and Agriculture

In Collaboration with Min. of Livestock, Min. of Commerce, Min. of Finance, Municipalities of Hargeisa, Burao, Tog Wajaale, Berbera Port Authority and H-Foods Ltd.

Yearly Report for the Period : 01-01-18 - 31-12-18

H-Foods Ltd.

NO CHILLED MEAT EXPORTED BY H-FOODS Ltd. DURING THE YEAR *



* Please refer to the data explanatory key in the first page

DATA STATISTICALLY VALIDATED

Visit www.somalilandchamber.com for more details

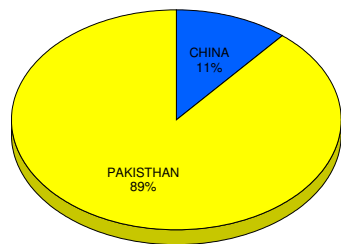


Hides & Skins Exported from Berbera Port and through Djibouti Port

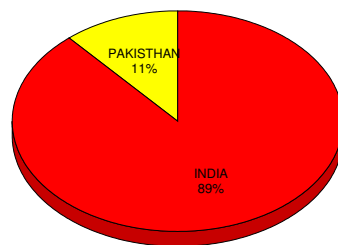
Export Date	Type	SHEEP & GOATS		CATTLE		CAMEL	
		Qty	Weight (Kgs)	Qty	Weight (Kgs)	Qty	Weight (Kgs)
	DRY						
Jan 2018	DRY	187,300	149,840				
Feb 2018	DRY	182,000	145,600	74,000	592,000		
Mar 2018	DRY	172,000	57,680	1,480	11,840		
Apr 2018	DRY	272,300	217,840				
May 2018	DRY	69,000	55,200				
Jun 2018	DRY	90,550	72,440	2,875	23,000		
Jul 2018	DRY	133,250	106,600	5,420	43,360		
Aug 2018	DRY	58,800	47,040				
Sep 2018	DRY	116,450	93,160				
Oct 2018	DRY	64,500	51,600				
Nov 2018	DRY	64,500	51,600				
Dec 2018	DRY	111,850	89,480	2,620	20,960		
	Sub Total :	1,522,500	1,138,080	86,395	691,160		
	WET BLUE						
Jul 2018	WET BLUE	48,000	38,400				
Aug 2018	WET BLUE	48,000	38,400				
Oct 2018	WET BLUE	48,000	38,400				
Nov 2018	WET BLUE	48,000	38,400				
	Sub Total :	192,000	153,600				
	Grand Total :	1,714,500	1,291,680	86,395	691,160		

Destination of Hides & Skins Exported from Berbera Port and through Djibouti Port

SHEEP & GOATS

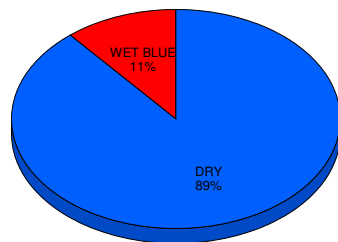


CATTLE



Type of Hides & Skins Exported from Berbera Port and through Djibouti Port

SHEEP & GOATS



CATTLE

