



DATA EXPLANATORY KEY

N/A: Not Available

The string N/A in one or more cells of a table/s indicates that the information is not available. This string may appear in tables of different sections of the report such as: **livestock export quality prices in USD, food commodities retail prices in USD, number of exporters active in the market,** etc. Information may not be available due to:

1. Closure of livestock Market/s or food outlet/s.

This may be due to:

- (a) "Sanitary Measures" enforced by the competent authorities.
- (b). "National holidays and religious festivities" such as Independence Day, lid Al Fitr, lid Al Adha, and Mowlid.

2. Demand and Supply Side Problems

Transactions for a particular grade/s of export quality livestock (cattle, camels and small ruminants) may not take place due to lack of demand or shortage of supply.

3. Unforeseen Circumstances

These are due to unavailability of Price Collector/s and/or Broker/s for unpredictable conditions.

0: ZERO

The figure may appear in graphs and tables of different sections of the report. For example: **the number of animals of different species of export and domestic quality marketed, the number of heads of different species exported from Berbera, the total number of animals involved in the cross-border trade with Djibouti through Lowya Caddo,** etc. Livestock are not shipped daily from Berbera and days when there are no shipments are represented as 0 (ZERO) in the respective tables. Zero values should be similarly considered in the table of the cross border trade with Djibouti. In bar histograms the figure replaces the bar whenever the quantity of animals marketed is zero.

"No Livestock/Chilled Meat/Hides & Skins Exported or Traded during the Period"

Each of these messages may appear in specific sections of the report without any other information displayed on the page. For example, if no chilled meat has been exported by H-Foods Ltd. during the month, the correspondent section of the report will show the message "No chilled meat exported by H-Foods Ltd. during the period." If no livestock have been shipped from Berbera during the period the list of vessels will be replaced by the message "No livestock exported during the period". If the livestock market has been closed for the whole month, the corresponding section/s of the report will show the message "No livestock traded during the period".

For any query please do not hesitate to contact the Somaliland Chamber of Commerce, Industry and Agriculture.

Contact Person:

Mohamed Abdullahi Dirie

Telephone:

+252-2-523143

Email Address:

slcham93@gmail.com

Please send us an e-mail for any request to be included in our mailing list for this monthly report.

Raw data are also available on request using the form on our web site.

For previous issues of this report please visit our web site:

WWW.SOMALILANDCHAMBER.COM



Funded by :

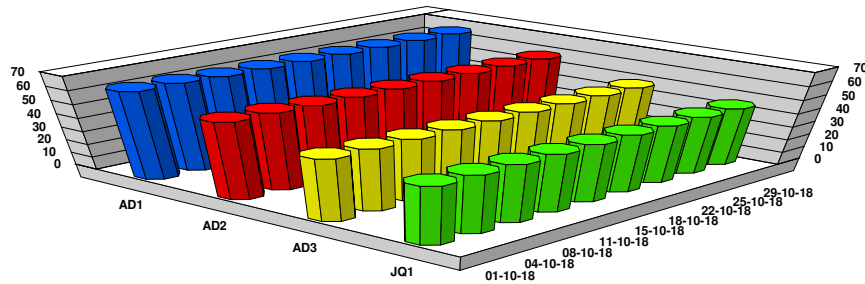
Implemented By :



DISCLAIMER: RAW DATA NOT STATISTICALLY VALIDATED

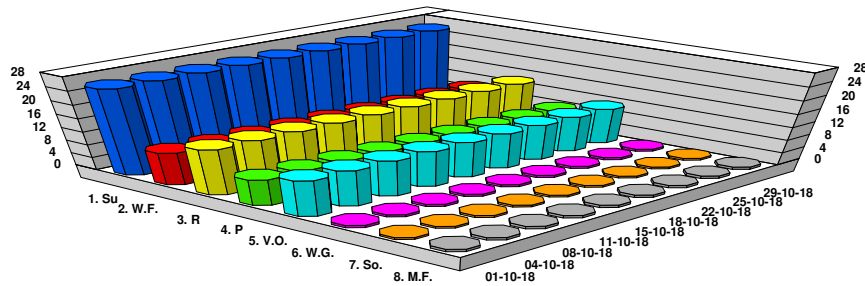


Small Ruminants Export Quality Prices in USD



	01 - Oct	04 - Oct	08 - Oct	11 - Oct	15 - Oct	18 - Oct	22 - Oct	25 - Oct	29 - Oct	Average
AD1 - Small Ruminants Grade 1	65.97	65.97	64.98	64.98	64.98	64.98	64.95	64.98	64.98	65.19
AD2 - Small Ruminants Grade 2	58.01	58.01	57.01	57.01	57.01	56.94	57.00	57.01	57.01	57.23
AD3 - Small Ruminants Grade 3	46.97	46.97	46.97	46.97	46.97	47.02	46.97	46.97	46.97	46.97
JQ1 - Lambs/Kids Grade 1	43.98	43.98	43.98	43.98	43.98	43.95	43.99	43.98	43.98	43.98

Key Food Commodities Retail Prices in USD



	01 - Oct	04 - Oct	08 - Oct	11 - Oct	15 - Oct	18 - Oct	22 - Oct	25 - Oct	29 - Oct	Average
1. Su - Sugar 50 Kgs	26.00	26.00	26.00	26.00	26.00	26.00	26.00	26.00	26.00	26.00
2. W.F. - Wheat Flour 25 Kg	10.00	10.00	10.00	10.00	10.00	10.00	10.00	10.00	10.00	10.00
3. R - Rice 25 Kg	14.00	14.00	14.00	14.00	14.00	14.00	14.00	14.00	14.00	14.00
4. P - Pasta 10 Kg	8.00	8.00	8.00	8.00	8.00	8.00	8.00	8.00	8.00	8.00
5. V.O. - Veg. Oil 10 Lt	11.00	11.00	11.00	11.00	11.00	11.00	11.00	11.00	11.00	11.00
6. W.G. - Wheat Grain 1 gl	0.69	0.69	0.69	0.69	0.69	0.69	0.69	0.69	0.69	0.69
7. So. - Sorghum 1 gl	0.59	0.59	0.59	0.59	0.59	0.59	0.59	0.59	0.59	0.59
8. M.F. - Maize 1 gl	0.79	0.79	0.79	0.79	0.79	0.79	0.79	0.79	0.79	0.79

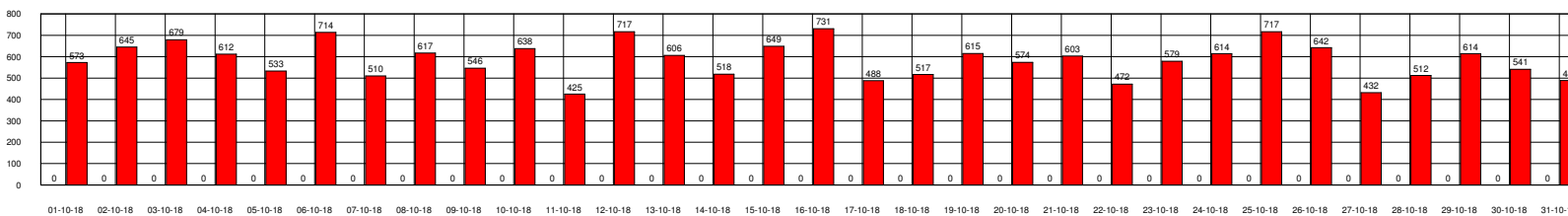
Exchange Rates to US\$

	01 - Oct	04 - Oct	08 - Oct	11 - Oct	15 - Oct	18 - Oct	22 - Oct	25 - Oct	29 - Oct	Average
SLsh to US\$ Exg Rates	10,050	10,050	10,050	10,050	10,050	10,080	10,070	10,050	10,050	10,056

Number of Exporters active in the market

	01 - Oct	04 - Oct	08 - Oct	11 - Oct	15 - Oct	18 - Oct	22 - Oct	25 - Oct	29 - Oct	Average
No. of Exporters	1	1	1	1	1	1	1	1	1	1.00

Number of Sheep & Goats Marketed (Export and Domestic Quality) during the period



Export Quality

0 Heads

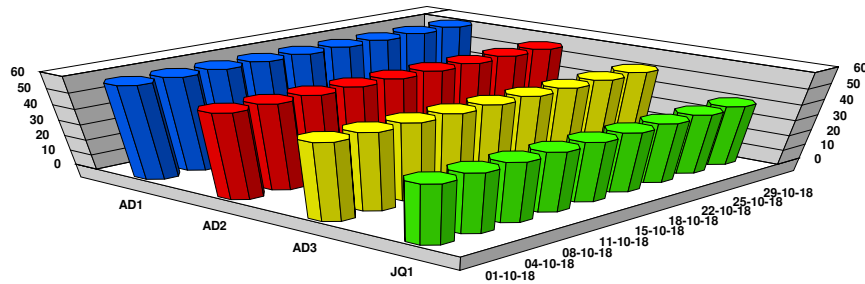
Domestic Quality

18,122 Heads



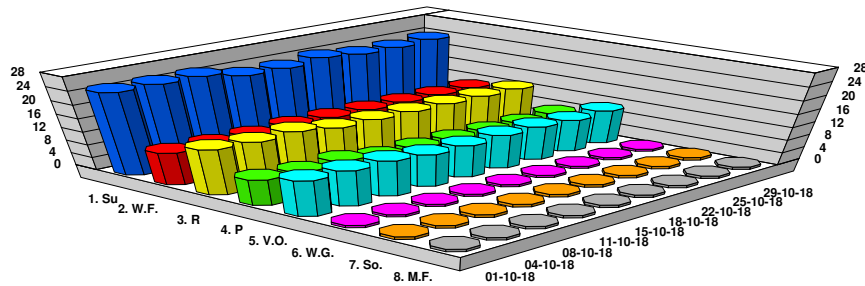


Small Ruminants Export Quality Prices in USD



	01 - Oct	04 - Oct	08 - Oct	11 - Oct	15 - Oct	18 - Oct	22 - Oct	25 - Oct	29 - Oct	Average
AD1 - Small Ruminants Grade 1	60.00	60.00	60.00	60.00	60.00	60.00	60.00	60.00	60.00	60.00
AD2 - Small Ruminants Grade 2	55.00	55.00	55.00	55.00	55.00	55.00	55.00	55.00	55.00	55.00
AD3 - Small Ruminants Grade 3	50.00	50.00	50.00	50.00	50.00	50.00	50.00	50.00	50.00	50.00
JQ1 - Lambs/Kids Grade 1	39.00	39.00	39.00	39.00	39.00	39.00	39.00	39.00	39.00	39.00

Key Food Commodities Retail Prices in USD



	01 - Oct	04 - Oct	08 - Oct	11 - Oct	15 - Oct	18 - Oct	22 - Oct	25 - Oct	29 - Oct	Average
1. Su - Sugar 50 Kgs	25.00	25.00	25.00	23.00	23.00	24.00	23.00	23.00	23.50	23.83
2. W.F. - Wheat Flour 25 Kg	10.00	10.00	10.00	10.50	10.50	10.50	10.50	10.50	10.50	10.33
3. R - Rice 25 Kg	14.00	13.50	14.00	12.50	12.50	12.50	12.50	12.50	12.50	12.94
4. P - Pasta 10 Kg	8.00	7.50	8.00	6.50	6.50	6.50	6.50	6.50	7.00	7.00
5. V.O. - Veg. Oil 10 Lt	11.00	11.00	11.00	10.00	10.00	10.50	10.50	10.00	10.50	10.50
6. W.G. - Wheat Grain 1 gl	0.69	0.69	0.69	0.69	0.69	0.69	0.69	0.69	0.69	0.69
7. So. - Sorghum 1 gl	0.85	0.85	0.85	0.85	0.85	0.85	0.85	0.85	0.85	0.85
8. M.F. - Maize 1 gl	0.78	0.78	0.78	0.78	0.78	0.78	0.78	0.78	0.78	0.78

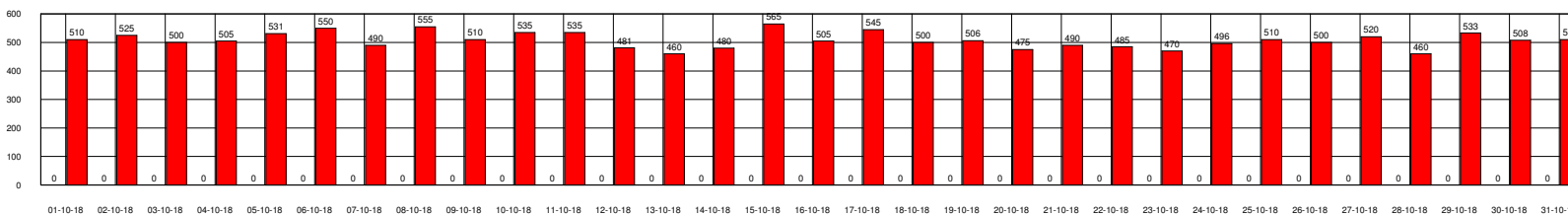
Exchange Rates to US\$

	01 - Oct	04 - Oct	08 - Oct	11 - Oct	15 - Oct	18 - Oct	22 - Oct	25 - Oct	29 - Oct	Average
SLsh to US\$ Exg Rates	10,050	10,055	10,030	10,050	10,085	10,060	10,050	10,030	10,050	10,051

Number of Exporters active in the market

	01 - Oct	04 - Oct	08 - Oct	11 - Oct	15 - Oct	18 - Oct	22 - Oct	25 - Oct	29 - Oct	Average
No. of Exporters	4	4	4	4	4	4	4	4	4	4.00

Number of Sheep & Goats Marketed (Export and Domestic Quality) during the period



Export Quality

0 Heads

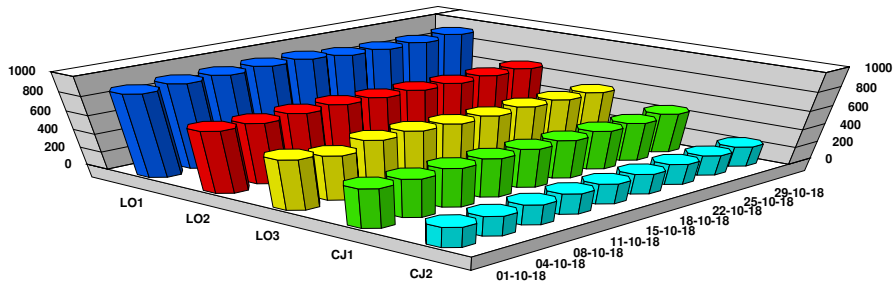
Domestic Quality

15,745 Heads



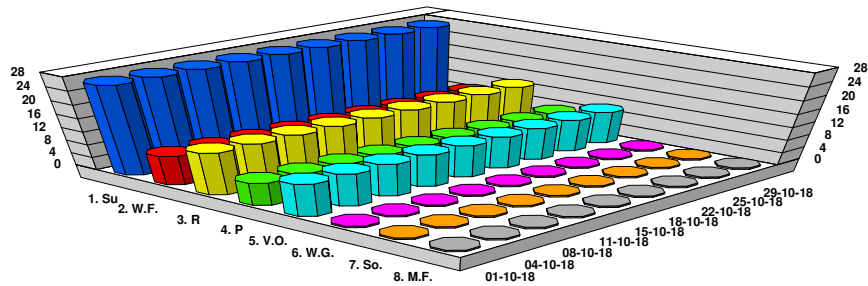


Cattle Export Quality Prices in USD



	01 - Oct	04 - Oct	08 - Oct	11 - Oct	15 - Oct	18 - Oct	22 - Oct	25 - Oct	29 - Oct	Average
LO1 - Cattle Mature GR1	900.50	920.00	925.00	937.50	935.00	900.00	890.00	890.00	907.50	911.72
LO2 - Cattle Mature GR2	677.50	665.00	677.50	682.50	670.00	665.00	657.50	660.00	660.00	668.33
LO3 - Cattle Mature GR3	552.50	490.00	555.00	557.50	540.00	535.00	545.00	535.00	530.00	537.78
CJ1 - Cattle Immature GR1	435.00	425.00	430.00	430.00	430.00	425.00	430.00	425.00	437.50	429.72
CJ2 - Cattle Immature GR2	225.00	220.00	225.00	230.00	225.00	225.00	230.00	225.00	225.00	225.56

Key Food Commodities Retail Prices in USD



	01 - Oct	04 - Oct	08 - Oct	11 - Oct	15 - Oct	18 - Oct	22 - Oct	25 - Oct	29 - Oct	Average
1. Su - Sugar 50 Kgs	27.00	27.00	27.00	27.00	27.00	27.00	27.00	27.00	27.00	27.00
2. W.F. - Wheat Flour 25 Kg	9.00	9.00	9.00	9.00	9.00	9.00	9.00	9.00	9.00	9.00
3. R - Rice 25 Kg	13.00	13.00	13.00	13.00	13.00	13.00	13.00	13.00	13.00	13.00
4. P - Pasta 10 Kg	7.00	7.00	7.00	7.00	7.00	7.00	7.00	7.00	7.00	7.00
5. V.O. - Veg. Oil 10 Lt	10.00	10.00	10.00	10.00	10.00	10.00	10.00	10.00	10.00	10.00
6. W.G. - Wheat Grain 1 gl	0.50	0.50	0.50	0.50	0.50	0.50	0.50	0.50	0.50	0.50
7. So. - Sorghum 1 gl	0.50	0.50	0.50	0.50	0.50	0.50	0.50	0.50	0.50	0.50
8. M.F. - Maize 1 gl	0.50	0.50	0.50	0.50	0.50	0.50	0.50	0.50	0.50	0.50

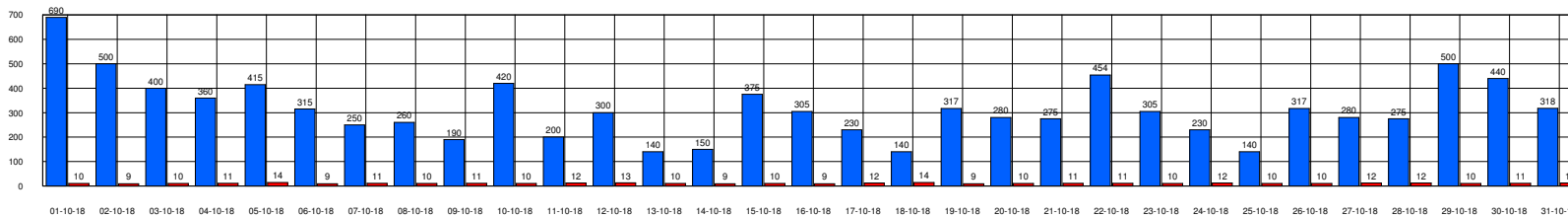
Exchange Rates to US\$

	01 - Oct	04 - Oct	08 - Oct	11 - Oct	15 - Oct	18 - Oct	22 - Oct	25 - Oct	29 - Oct	Average
Birr to US\$ Exg Rates	35.00	35.00	35.00	35.00	35.00	35.00	35.00	35.00	35.00	35.00

Number of Exporters active in the market

	01 - Oct	04 - Oct	08 - Oct	11 - Oct	15 - Oct	18 - Oct	22 - Oct	25 - Oct	29 - Oct	Average
No. of Exporters	130	120	135	164	164	130	120	140	130	137.00

Number of Cattle Marketed (Export and Domestic Quality) during the period



Export Quality

9,771 Heads

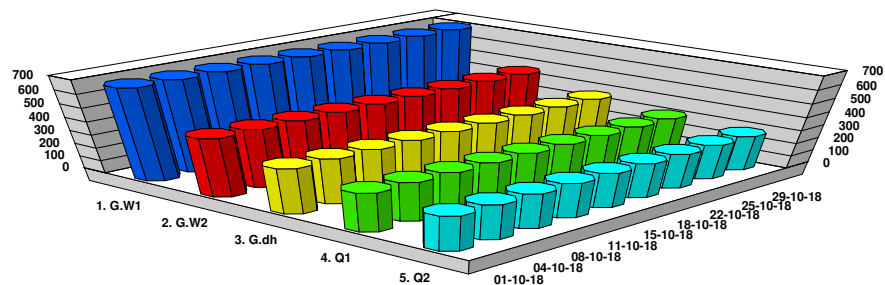
Domestic Quality

334 Heads



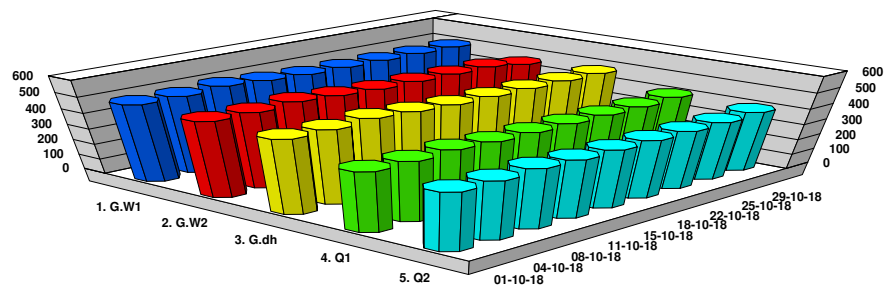


Hargeisa Camel Export Quality Prices in USD



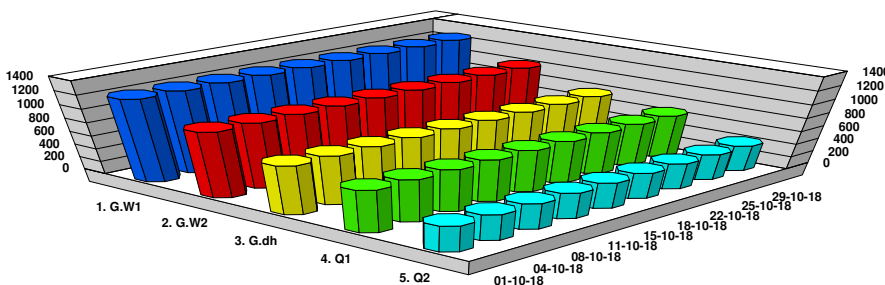
	01 - Oct	04 - Oct	08 - Oct	11 - Oct	15 - Oct	18 - Oct	22 - Oct	25 - Oct	29 - Oct	Average
1. G.W1 - Camel Mature GR1	696.52	696.52	696.52	696.52	696.52	694.44	695.13	696.52	696.52	696.13
2. G.W2 - Camel Mature GR2	447.76	447.76	447.76	447.76	447.76	446.43	446.87	447.76	447.76	447.51
3. G.dh - Camel Intermediate	348.26	348.26	348.26	348.26	348.26	347.22	347.57	348.26	348.26	348.07
4. Q1 - Camel Immature GR1	298.51	298.51	298.51	298.51	298.51	297.62	297.91	298.51	298.51	298.34
5. Q2 - Camel Immature GR2	268.66	268.66	268.66	268.66	268.66	267.86	268.12	268.66	268.66	268.51

Burao Camel Export Quality Prices in USD



	01 - Oct	04 - Oct	08 - Oct	11 - Oct	15 - Oct	18 - Oct	22 - Oct	25 - Oct	29 - Oct	Average
1. G.W1 - Camel Mature GR1	500.00	500.00	513.46	500.00	490.00	490.00	490.00	490.00	490.00	495.94
2. G.W2 - Camel Mature GR2	490.00	490.00	503.19	490.00	480.00	480.00	480.00	480.00	450.15	482.59
3. G.dh - Camel Intermediate	480.14	480.00	492.92	480.00	470.00	470.00	470.00	470.00	470.00	475.90
4. Q1 - Camel Immature GR1	390.00	390.00	400.50	390.00	390.00	390.00	389.95	390.00	400.00	392.27
5. Q2 - Camel Immature GR2	380.00	380.00	390.23	380.00	380.00	380.00	380.00	380.00	390.00	382.25

Tog Wajaale Camel Export Quality Prices in USD



	01 - Oct	04 - Oct	08 - Oct	11 - Oct	15 - Oct	18 - Oct	22 - Oct	25 - Oct	29 - Oct	Average
1. G.W1 - Camel Mature GR1	1,250.00	1,250.00	1,250.00	1,250.00	1,250.00	1,250.00	1,250.00	1,250.00	1,250.00	1,250.00
2. G.W2 - Camel Mature GR2	1,000.00	1,000.00	1,000.00	1,000.00	1,000.00	1,000.00	1,000.00	1,000.00	1,000.00	1,000.00
3. G.dh - Camel Intermediate	750.00	750.00	750.00	750.00	750.00	750.00	750.00	750.00	750.00	750.00
4. Q1 - Camel Immature GR1	650.00	650.00	650.00	650.00	650.00	650.00	650.00	650.00	650.00	650.00
5. Q2 - Camel Immature GR2	400.00	400.00	400.00	400.00	400.00	400.00	400.00	400.00	400.00	400.00





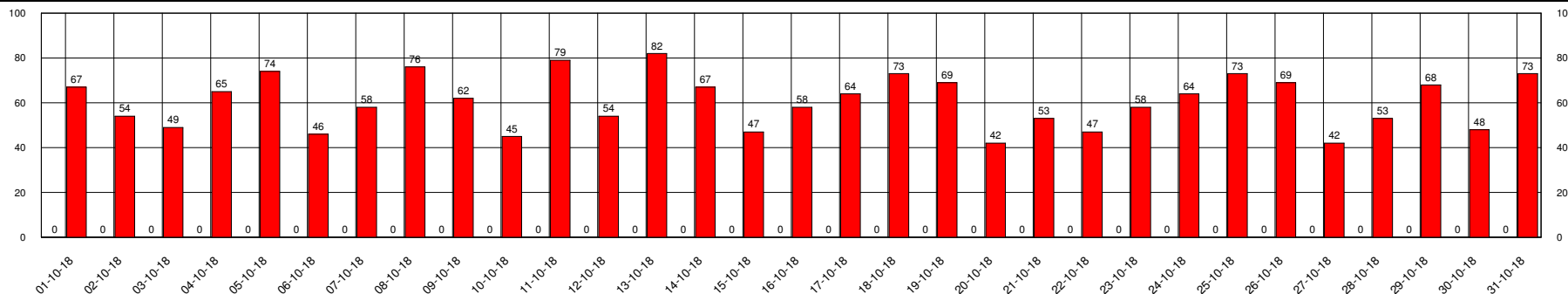
Somaliland Chamber of Commerce, Industry and Agriculture

In Collaboration with Min. of Livestock, Min. of Commerce, Min. of Finance, Municipalities of Hargeisa, Burao, Tog Wajaale, Berbera Port Authority and H-Foods Ltd.

Camel Quantities

October 2018

Hargeisa - Number of Camels Marketed (Export and Domestic Quality) during the period



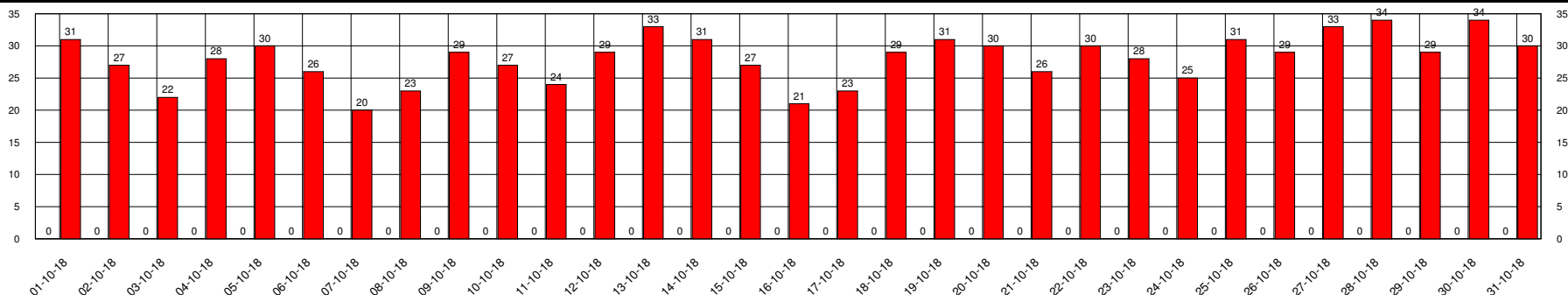
Export Quality

0 Heads

Domestic Quality

1,879 Heads

Burao - Number of Camels Marketed (Export and Domestic Quality) during the period



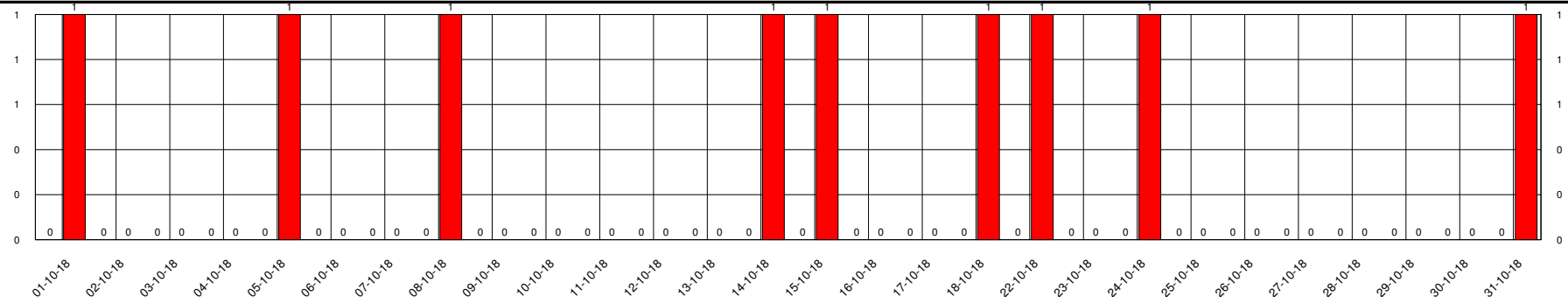
Export Quality

0 Heads

Domestic Quality

870 Heads

Tog Wajaale - Number of Camels Marketed (Export and Domestic Quality) during the period



Export Quality

0 Heads

Domestic Quality

9 Heads

Funded by :



Implemented by:



* Please refer to the data explanatory key in the first page

DISCLAIMER: RAW DATA NOT STATISTICALLY VALIDATED

VISIT WWW.SOMALILANDCHAMBER.COM FOR MORE DETAILS



Somaliland Chamber of Commerce, Industry and Agriculture

In Collaboration with Min. of Livestock, Min. of Commerce, Min. of Finance, Municipalities of Hargeisa, Burao, Tog Wajaale, Berbera Port Authority and H-Foods Ltd.

Berbera Port

October 2018

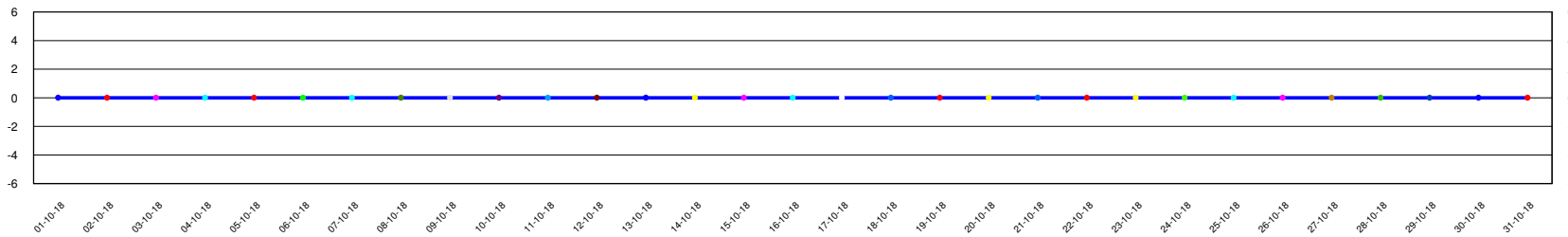
Total number of heads exported from Berbera port

Source: Berbera Port Authority

	01 Oct 18	02 Oct 18	03 Oct 18	04 Oct 18	05 Oct 18	06 Oct 18	07 Oct 18	08 Oct 18	09 Oct 18	10 Oct 18	11 Oct 18	12 Oct 18	13 Oct 18	14 Oct 18	15 Oct 18	16 Oct 18	17 Oct 18	18 Oct 18	19 Oct 18	20 Oct 18	21 Oct 18	22 Oct 18	23 Oct 18	24 Oct 18	25 Oct 18	26 Oct 18	27 Oct 18	28 Oct 18	29 Oct 18	30 Oct 18	31 Oct 18	Total
Camels	0	0	0	0	0	0	0	0	0	0	0	0	0	0	0	0	0	0	0	0	0	0	0	0	0	0	0	0	0	0	0	0
Cattle	0	0	200	0	0	0	0	0	0	0	0	0	0	0	500	0	500	0	0	0	0	0	497	0	499	0	0	0	0	0	0	0
Sheep & Goats	0	0	1,000	0	0	1,020	0	0	0	0	0	0	0	0	0	0	0	0	0	0	0	3,200	0	0	0	0	0	0	0	0	0	
Total	0	0	1,200	0	0	1,020	0	0	0	0	0	0	0	0	500	0	500	0	0	0	0	3,200	0	497	0	499	0	0	0	0	0	

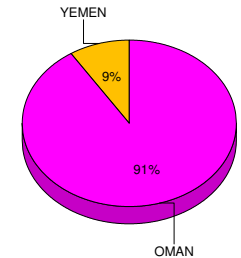
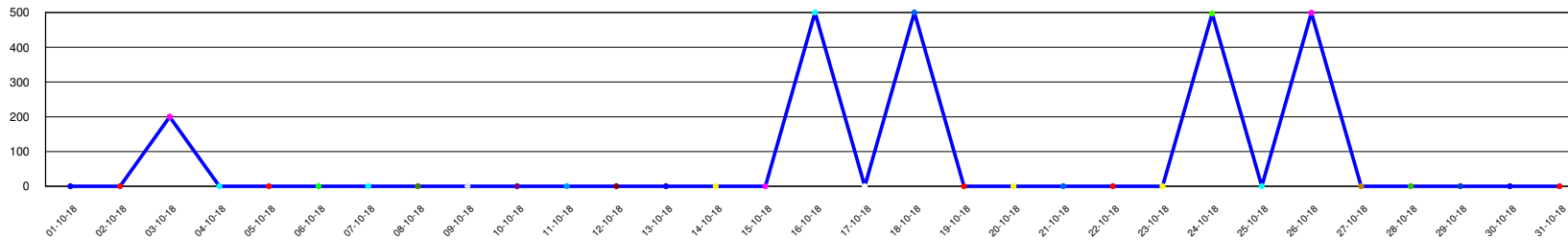
Number of Camels exported and percentage according to country of destination

0.00%



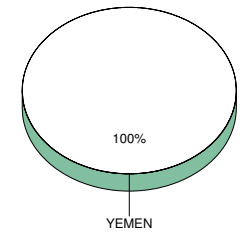
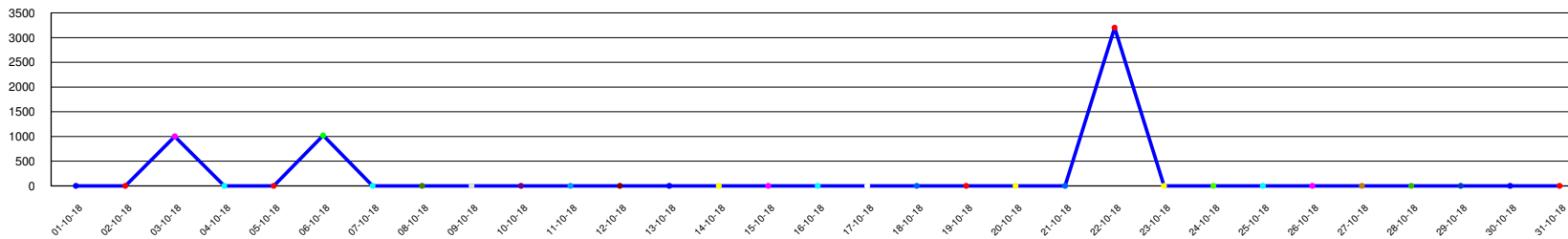
Number of Cattle exported and percentage according to country of destination

29.61%



Number of Sheep & Goats exported and percentage according to country of destination

70.39%



Funded by :



Implemented by:



* Please refer to the data explanatory key in the first page
 DISCLAIMER: RAW DATA NOT STATISTICALLY VALIDATED
 VISIT WWW.SOMALILANDCHAMBER.COM FOR MORE DETAILS



Somaliland Chamber of Commerce, Industry and Agriculture

In Collaboration with Min. of Livestock, Min. of Commerce, Min. of Finance, Municipalities of Hargeisa, Burao, Tog Wajaale, Berbera Port Authority and H-Foods Ltd.

Berbera Port

October 2018

Vessels Used to Export Livestock and Quantities Exported				Information Source: Berbera Port Authority		
Export Date	Vessel Name	Capacity (tons)	No. of Shoats	No. of Cattle	No. of Camels	Vessel Destination
03-Oct-2018	S/K MUFATAF	550	1,000	200	0	YEMEN
06-Oct-2018	S/K MADAF	890	1,020	0	0	YEMEN
16-Oct-2018	S/K SAFA	680	0	500	0	OMAN
18-Oct-2018	S/K MANSHA ALAH	540	0	500	0	OMAN
22-Oct-2018	S/K AL YASIIN	450	3,200	0	0	YEMEN
24-Oct-2018	S/K SHAHE F. NOOR 1	750	0	497	0	OMAN
26-Oct-2018	S/K GOSE AAZAM	720	0	499	0	OMAN
			5,220	2,196	0	

Funded by :



Implemented by:



* Please refer to the data explanatory key in the first page
DISCLAIMER: RAW DATA NOT STATISTICALLY VALIDATED
VISIT WWW.SOMALILANDCHAMBER.COM FOR MORE DETAILS



Somaliland Chamber of Commerce, Industry and Agriculture

In Collaboration with Min. of Livestock, Min. of Commerce, Min. of Finance, Municipalities of Hargeisa, Burao, Tog Wajaale, Berbera Port Authority and H-Foods Ltd.

Berbera Port

October 2018

Total number of heads exported from Berbera port by species and country of destination

Source: Berbera Port Authority

		01 - Oct	02 - Oct	03 - Oct	04 - Oct	05 - Oct	06 - Oct	07 - Oct	08 - Oct	09 - Oct	10 - Oct	11 - Oct	12 - Oct	13 - Oct	14 - Oct	15 - Oct	16 - Oct	17 - Oct	18 - Oct	19 - Oct	20 - Oct	21 - Oct	22 - Oct	23 - Oct	24 - Oct	25 - Oct	26 - Oct	27 - Oct	28 - Oct	29 - Oct	30 - Oct	31 - Oct	Total
Cattle	OMAN															500		500							497		499						1,996
	YEMEN			200																													200
	Sub Total	0	0	200	0	0	0	0	0	0	0	0	0	0	0	0	500	0	500	0	0	0	0	0	0	497	0	499	0	0	0	0	0
Sheep & Goats	YEMEN			1,000			1,020																3,200										5,220
	Sub Total	0	0	1,000	0	0	1,020	0	0	0	0	0	0	0	0	0	0	0	0	0	0	0	0	3,200	0	0	0	0	0	0	0	0	5,220
Grand Total		0	0	1,200	0	0	1,020	0	0	0	0	0	0	0	0	0	500	0	500	0	0	0	3,200	0	497	0	499	0	0	0	0	0	7,416

Funded by :



Implemented by:



* Please refer to the data explanatory key in the first page
DISCLAIMER: RAW DATA NOT STATISTICALLY VALIDATED
VISIT WWW.SOMALILANDCHAMBER.COM FOR MORE DETAILS

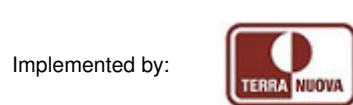
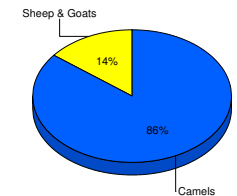
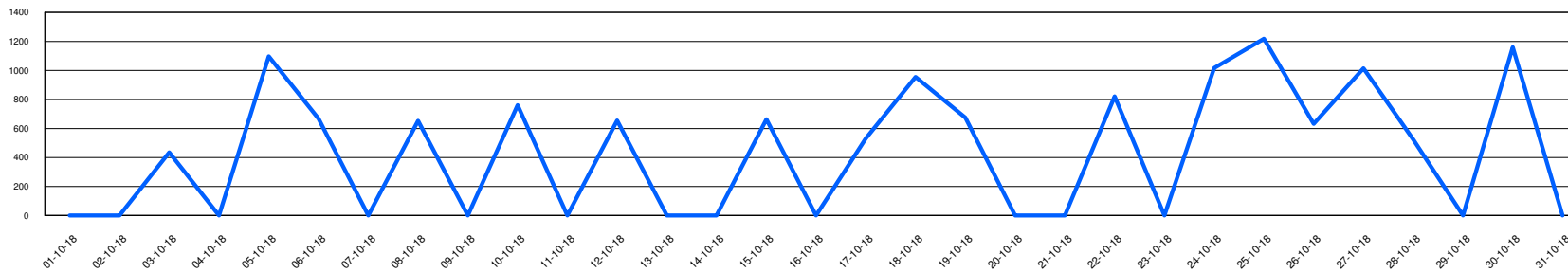


Cross Border Trade with Djibouti through Lowya-Caddo

Information Source : Lowya-Caddo Customs Office

		01 - Oct	02 - Oct	03 - Oct	04 - Oct	05 - Oct	06 - Oct	07 - Oct	08 - Oct	09 - Oct	10 - Oct	11 - Oct	12 - Oct	13 - Oct	14 - Oct	15 - Oct	16 - Oct	17 - Oct	18 - Oct	19 - Oct	20 - Oct	21 - Oct	22 - Oct	23 - Oct	24 - Oct	25 - Oct	26 - Oct	27 - Oct	28 - Oct	29 - Oct	30 - Oct	31 - Oct	Total
Camels	Djibouti			435		912	532		653		563		655			452		532	844	575			633		854	985	632	785	524		975		11,541
Sheep & Goats	Djibouti					185	135				198					211			111	100			188		163	233		230			185		1,939
Grand Total		0	0	435	0	1,097	667	0	653	0	761	0	655	0	663	0	532	955	675	0	0	821	0	1,017	1,218	632	1,015	524	0	1,160	0	13,480	

Total Number of Animals Exported to Djibouti through Lowya Caddo during the period



* Please refer to the data explanatory key in the first page
 DISCLAIMER: RAW DATA NOT STATISTICALLY VALIDATED
 VISIT WWW.SOMALILANDCHAMBER.COM FOR MORE DETAILS

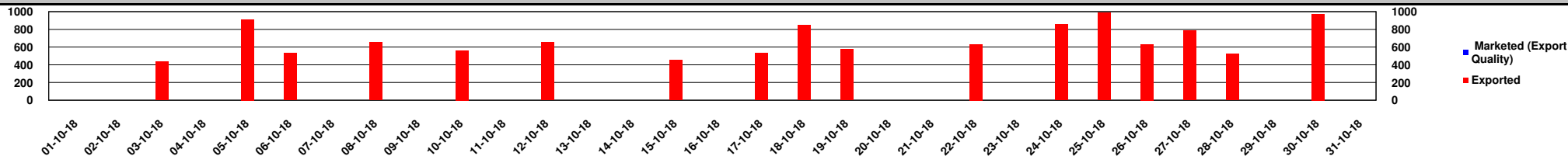


Comparison of daily quantities of different species marketed (Export Quality Sheep, Goats and Camels in Hargeisa and Burao; Cattle & Camels in Tog Wajaale) and **Exported

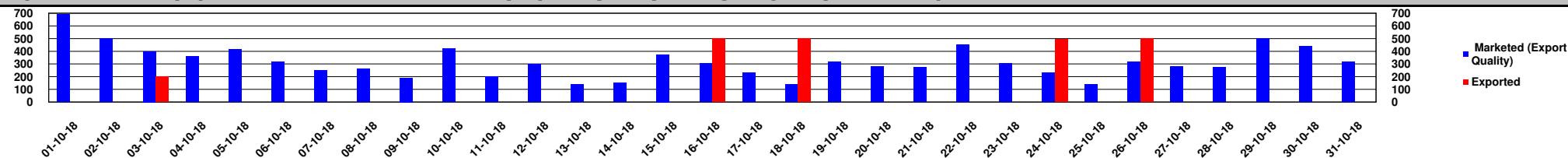
		01 - Oct	02 - Oct	03 - Oct	04 - Oct	05 - Oct	06 - Oct	07 - Oct	08 - Oct	09 - Oct	10 - Oct	11 - Oct	12 - Oct	13 - Oct	14 - Oct	15 - Oct	16 - Oct	17 - Oct	18 - Oct	19 - Oct	20 - Oct	21 - Oct	22 - Oct	23 - Oct	24 - Oct	25 - Oct	26 - Oct	27 - Oct	28 - Oct	29 - Oct	30 - Oct	31 - Oct	Total Quantities
Camels	Marketed (Export Quality)																																0
	Exported			435		912	532		653		563		655		452		532	844	575		633		854	985	632	785	524		975			11,541	
Cattle	Marketed (Export Quality)	690	500	400	360	415	315	250	260	190	420	200	300	140	150	375	305	230	140	317	280	275	454	305	230	140	317	280	275	500	440	318	9,771
	Exported			200													500		500						497		499						2,196
Sheep & Goats	Marketed (Export Quality)																																0
	Exported			1,000		185	1,155				198					211			111	100			3,388		163	233		230			185	7,159	

** Exported : Number of Animal Exported through Berbera Port and Lowya-Caddo

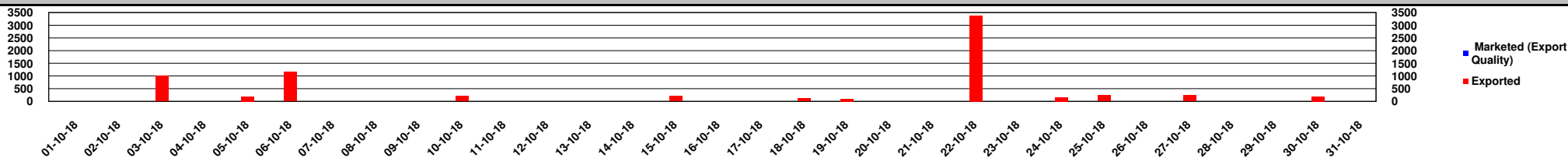
Comparison of daily quantities of Camels Marketed (Export Quality in Hargeisa, Burao and Tog Wajaale) and **Exported



Comparison of daily quantities of Cattle Marketed (Export Quality in Tog Wajaale) and **Exported



Comparison of daily quantities of Sheep & Goats Marketed (Export Quality in Hargeisa and Burao) and **Exported





Somaliland Chamber of Commerce, Industry and Agriculture

In Collaboration with Min. of Livestock, Min. of Commerce, Min. of Finance, Municipalities of Hargeisa, Burao, Tog Wajaale, Berbera Port Authority and H-Foods Ltd.

H-Foods Ltd.

October 2018

NO CHILLED MEAT EXPORTED BY H-FOODS Ltd. DURING THE PERIOD *

Funded by :



Implemented by:



* Please refer to the data explanatory key in the first page
DISCLAIMER: RAW DATA NOT STATISTICALLY VALIDATED
VISIT WWW.SOMALILANDCHAMBER.COM FOR MORE DETAILS



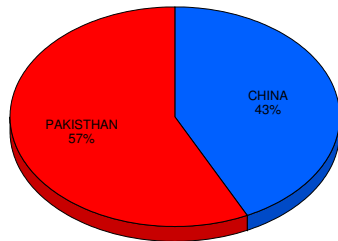
Hides & Skins Exported from Berbera Port and through Djibouti Port

Export Date	Type	SHEEP & GOATS		CATTLE		CAMEL		Destination*
		Qty	Weight (Kgs)	Qty	Weight (Kgs)	Qty	Weight (Kgs)	
Exported From : BERBERA PORT								
12-Oct-2018	DRY	64,500	51,600					PAKISTHAN
27-Oct-2018	WET BLUE	48,000	38,400					CHINA
Sub Total :		112,500	90,000					
Grand Total :		112,500	90,000					

* Destination denotes Final Destination in case hides and skins are exported to Djibouti

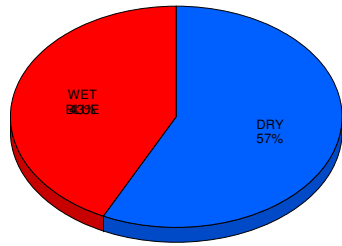
Destination of Hides & Skins Exported from Berbera Port and through Djibouti Port

SHEEP & GOATS



Type of Hides & Skins Exported from Berbera Port and through Djibouti Port

SHEEP & GOATS



Funded by :



Implemented by:



* Please refer to the data explanatory key in the first page
DISCLAIMER: RAW DATA NOT STATISTICALLY VALIDATED
[VISIT WWW.SOMALILANDCHAMBER.COM](http://WWW.SOMALILANDCHAMBER.COM) FOR MORE DETAILS