



DATA EXPLANATORY KEY

0: ZERO

The figure may appear in graphs and tables of some sections of the report, such as: **total number of animals** (of different species) **marketed** (export and domestic quality) **in Hargeisa, Burao and Tog Wajaale, total number of heads (of different species) exported from Berbera port and cross-border trade with Djibouti through Lowya Caddo, Hides & Skins exported from Berbera Port.** Months when animals of a particular species of export or/and domestic quality are no traded in Hargeisa, Burao or Tog Wajaale are represented as 0 (ZERO) in the respective table/s. Zero values should be similarly considered in the tables of livestock export from Berbera port and cross border trade with Djibouti.

For any query please do not hesitate to contact the Somaliland Chamber of Commerce, Industry and Agriculture.

Contact Person:
Mohamed Abdullahi Dirie

Telephone:
+252-2-523143

Email Address:
slcham93@gmail.com

Please send us an e-mail for any request to be included in our mailing list for this monthly report.

Raw data are also available on request using the form on our web site.

For previous issues of this report please visit our web site:

WWW.SOMALILANDCHAMBER.COM

Funded by :



Implemented by:

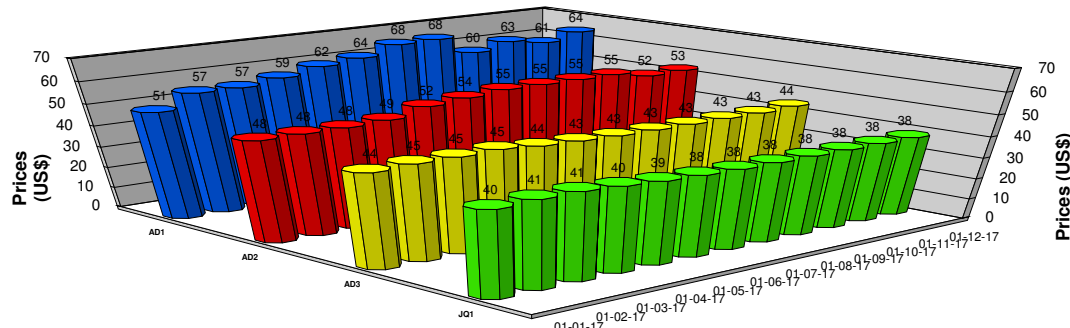


DATA STATISTICALLY VALIDATED

Visit www.somalilandchamber.com for more details

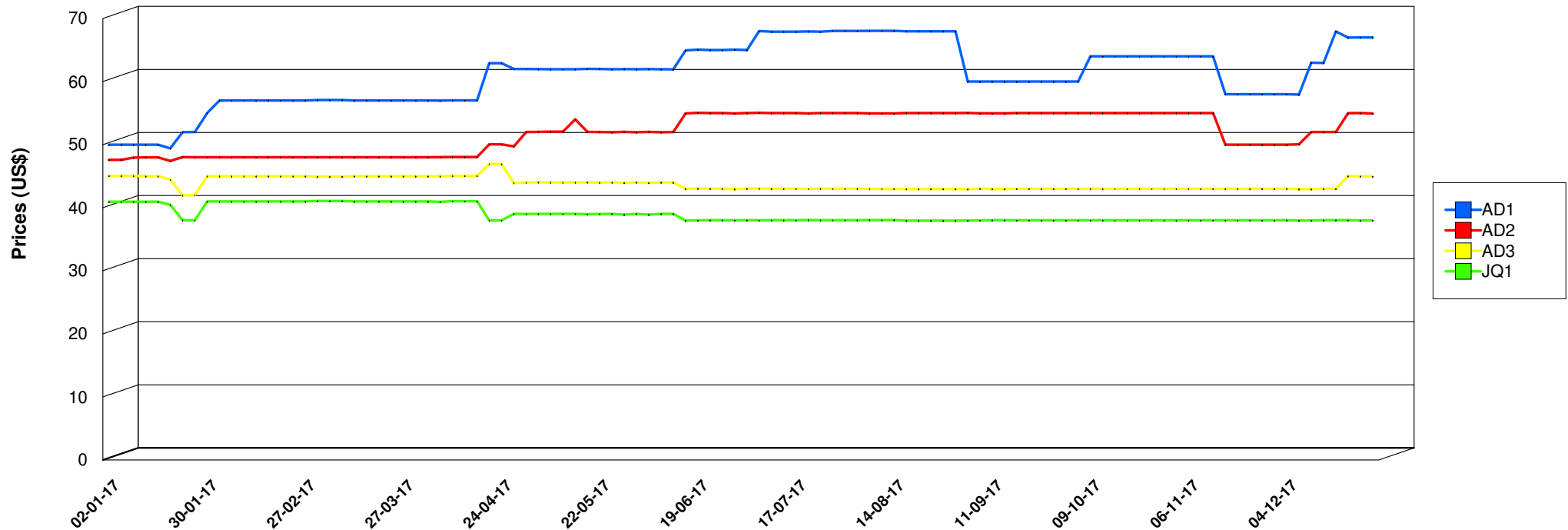


Hargeisa - Small Ruminants Export Quality Prices in USD



Code	Description	Yearly Average Price	Yearly Minimum Price	Yearly Maximum Price
AD1	Small Ruminants Grade 1	61.12	49.41	68.04
AD2	Small Ruminants Grade 2	51.97	47.41	55.05
AD3	Small Ruminants Grade 3	43.80	41.98	46.93
JQ1	Lambs/Kids Grade 1	38.97	37.96	41.07

Note: Prices represent the monthly average of prices from the respective market



* Please refer to the data explanatory key in the first page

DATA STATISTICALLY VALIDATED
Visit www.somalilandchamber.com for more details

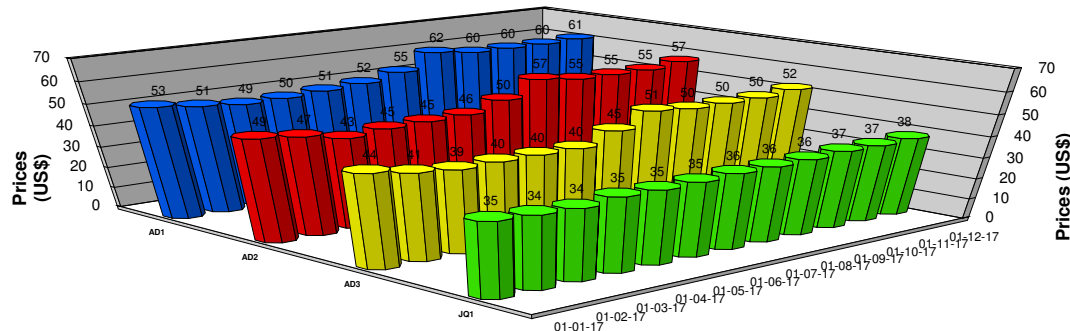


Implemented by:



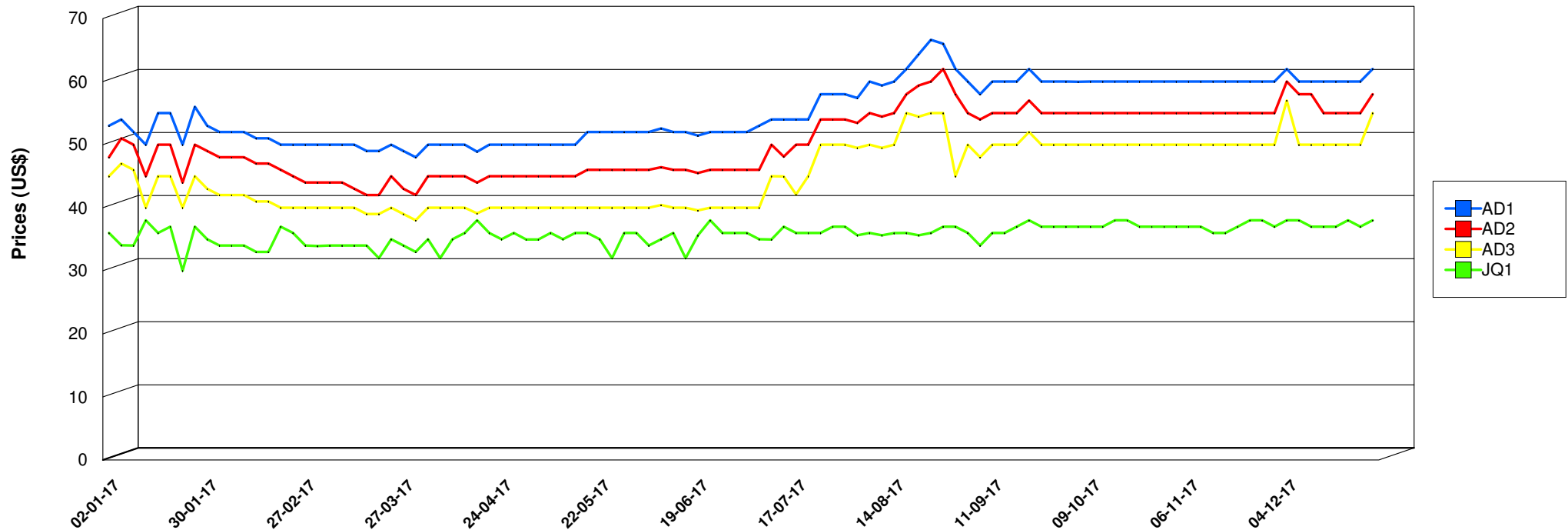


Burao - Small Ruminants Export Quality Prices in USD



Code	Description	Yearly Average Price	Yearly Minimum Price	Yearly Maximum Price
AD1	Small Ruminants Grade 1	55.31	48.00	66.62
AD2	Small Ruminants Grade 2	50.32	42.00	62.00
AD3	Small Ruminants Grade 3	45.20	38.00	57.00
JQ1	Lambs/Kids Grade 1	35.79	30.00	38.00

Note: Prices represent the monthly average of prices from the respective market



* Please refer to the data explanatory key in the first page



Implemented by:

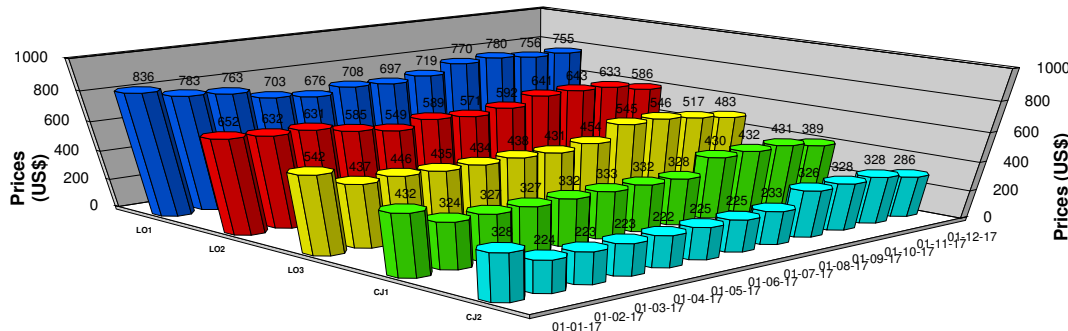


DATA STATISTICALLY VALIDATED

Visit www.somalilandchamber.com for more details

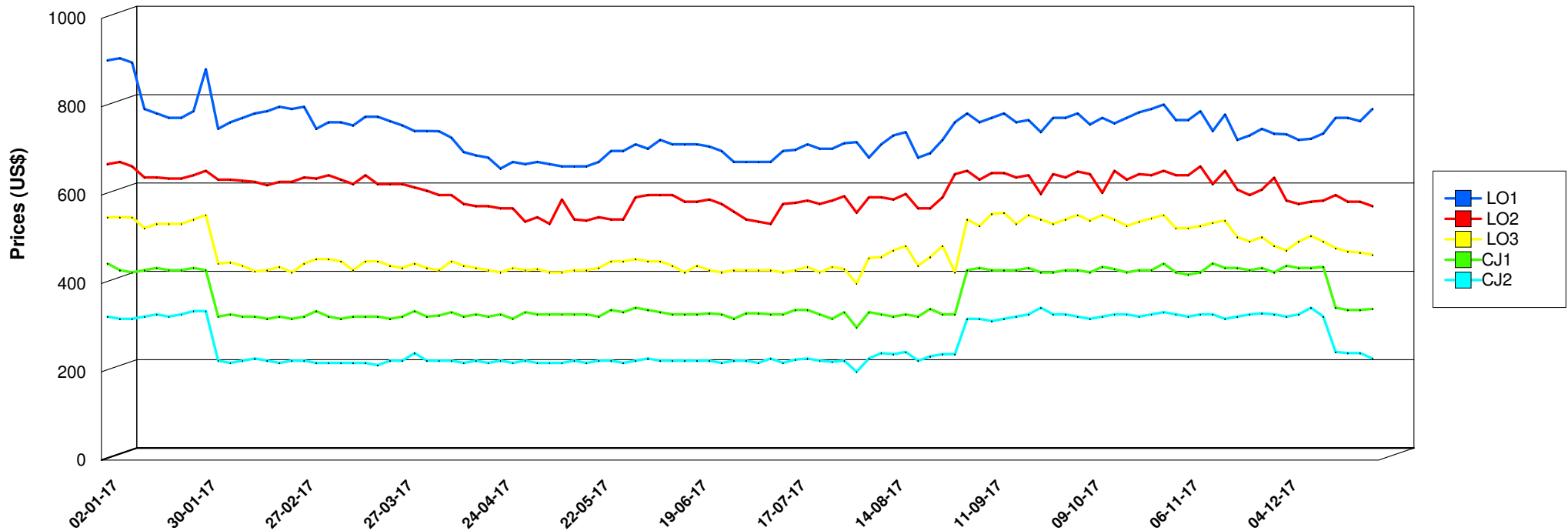


Tog Wajaale - Cattle Export Quality Prices in USD



Note: Prices represent the monthly average of prices from the respective market

Code	Description	Yearly Average Price	Yearly Minimum Price	Yearly Maximum Price
LO1	Cattle Mature GR1	745.18	660.00	910.00
LO2	Cattle Mature GR2	608.39	535.00	675.00
LO3	Cattle Mature GR3	475.70	400.00	560.00
CJ1	Cattle Immature GR1	368.01	300.00	445.50
CJ2	Cattle Immature GR2	264.21	200.00	345.00



* Please refer to the data explanatory key in the first page

DATA STATISTICALLY VALIDATED
Visit www.somalilandchamber.com for more details

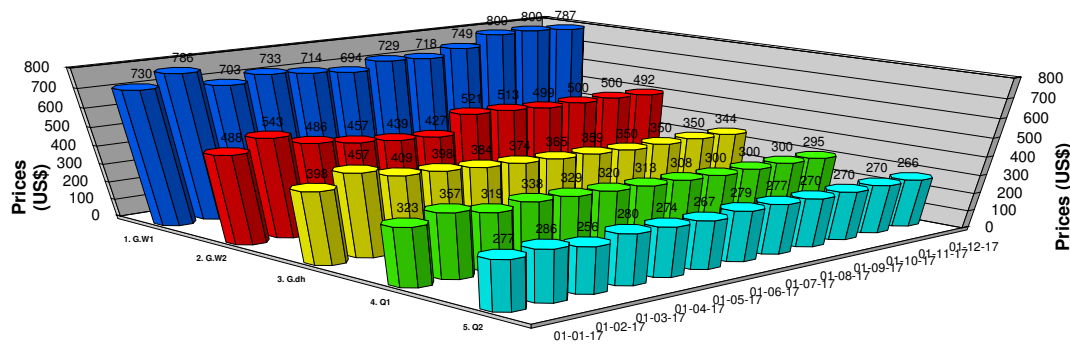


Implemented by:



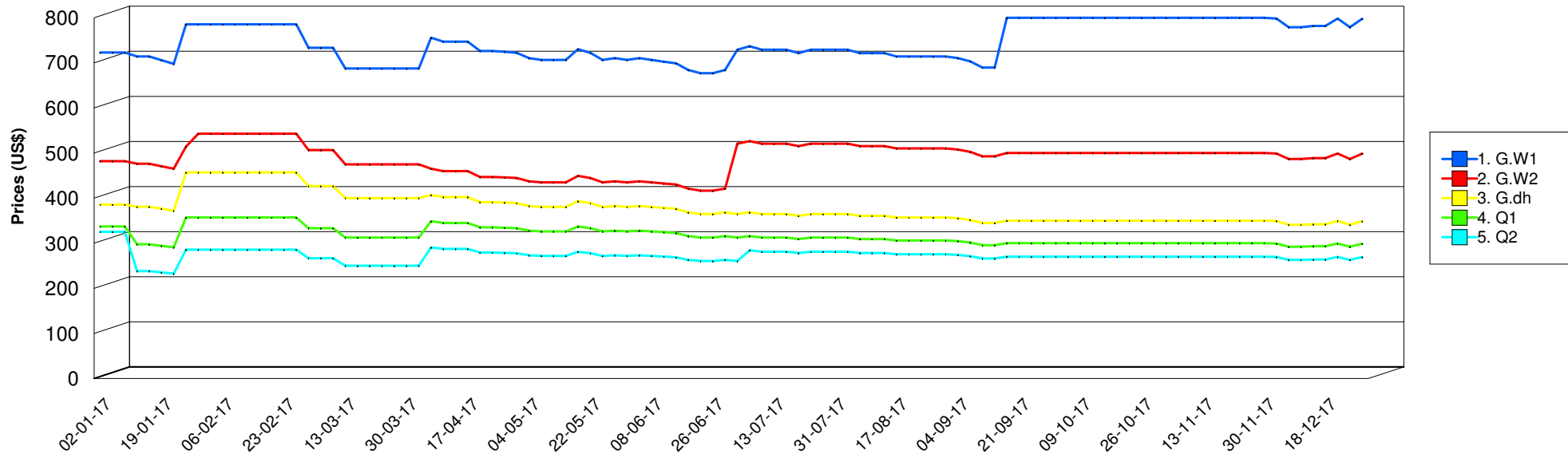


Hargeisa - Camel Export Quality Prices in USD



Code	Description	Yearly Average Price	Yearly Minimum Price	Yearly Maximum Price
1. G.W1	Camel Mature GR1	744.53	677.08	800.00
2. G.W2	Camel Mature GR2	488.42	416.67	542.86
3. G.dh	Camel Intermediate	377.80	340.80	457.14
4. Q1	Camel Immature GR1	316.62	290.70	357.14
5. Q2	Camel Immature GR2	272.47	232.56	325.30

Note: Prices represent the monthly average prices from the respective market



* Please refer to the data explanatory key in the first page



Implemented by:

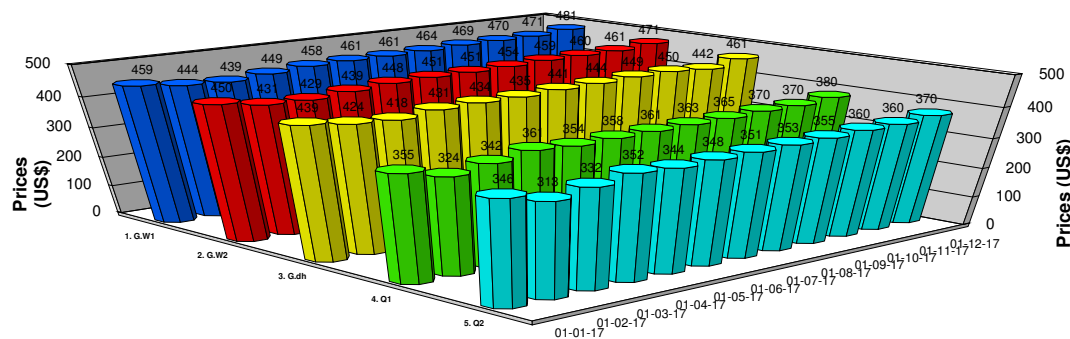


DATA STATISTICALLY VALIDATED

Visit www.somalilandchamber.com for more details

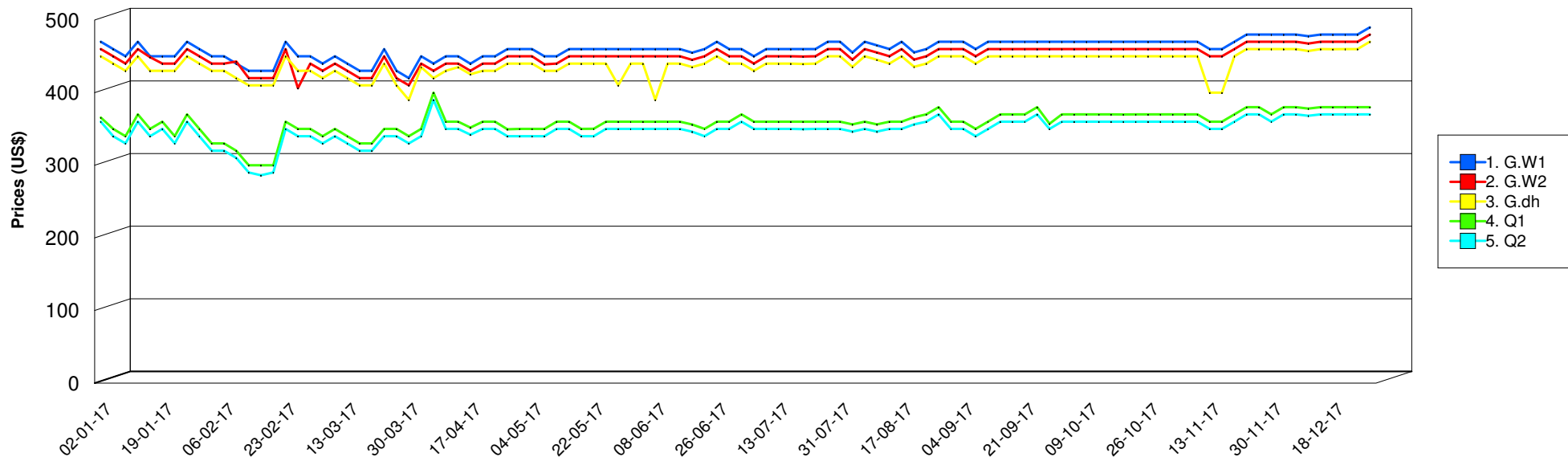


Burao - Camel Export Quality Prices in USD

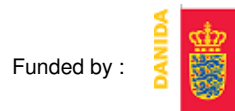


Code	Description	Yearly Average Price	Yearly Minimum Price	Yearly Maximum Price
1. G.W1	Camel Mature GR1	460.37	420.00	490.00
2. G.W2	Camel Mature GR2	450.24	406.25	480.00
3. G.dh	Camel Intermediate	438.88	390.00	470.00
4. Q1	Camel Immature GR1	358.73	300.00	400.00
5. Q2	Camel Immature GR2	348.76	286.14	390.00

Note: Prices represent the monthly average prices from the respective market

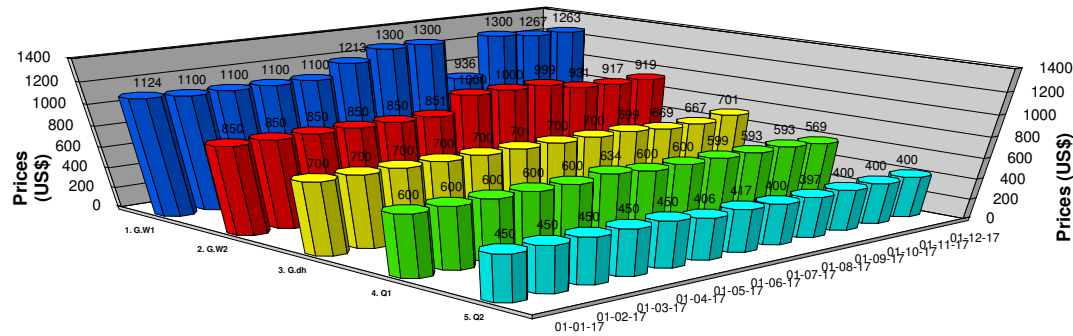


* Please refer to the data explanatory key in the first page



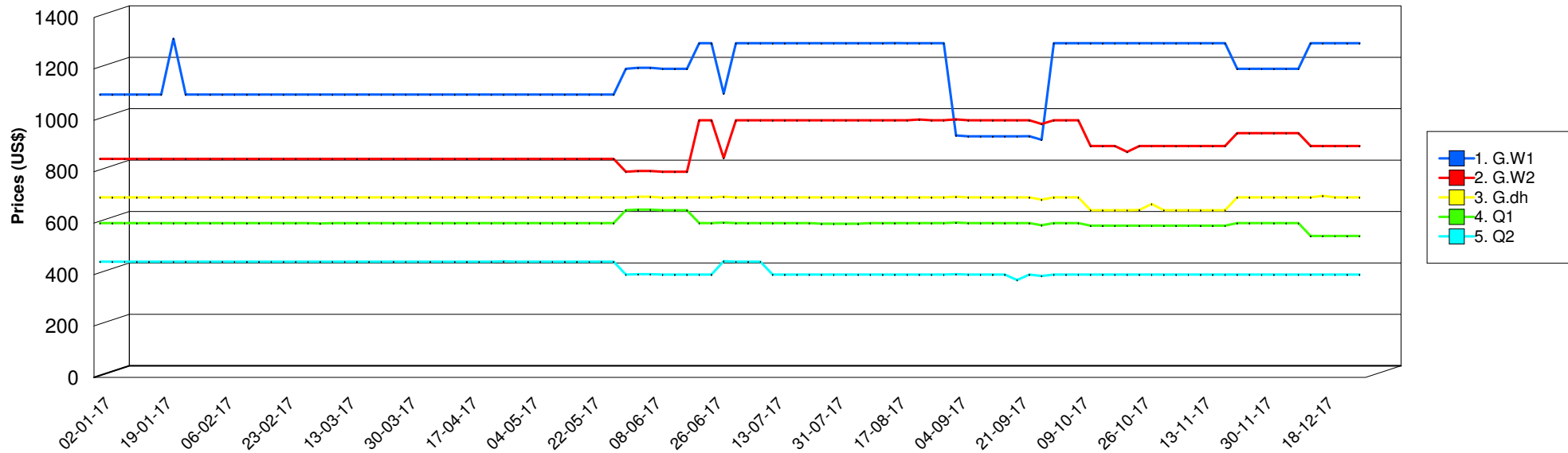


Tog Wajaale - Camel Export Quality Prices in USD



Code	Description	Yearly Average Price	Yearly Minimum Price	Yearly Maximum Price
1. G.W1	Camel Mature GR1	1,178.10	924.29	1,317.39
2. G.W2	Camel Mature GR2	905.56	800.00	1,003.64
3. G.dh	Camel Intermediate	694.54	650.00	706.15
4. Q1	Camel Immature GR1	599.23	550.00	652.36
5. Q2	Camel Immature GR2	422.40	378.26	451.64

Note: Prices represent the monthly average prices from the respective market

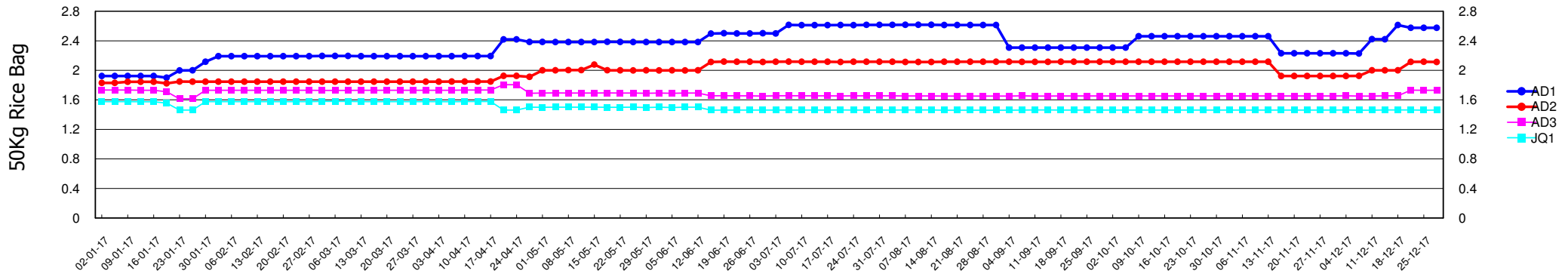


* Please refer to the data explanatory key in the first page

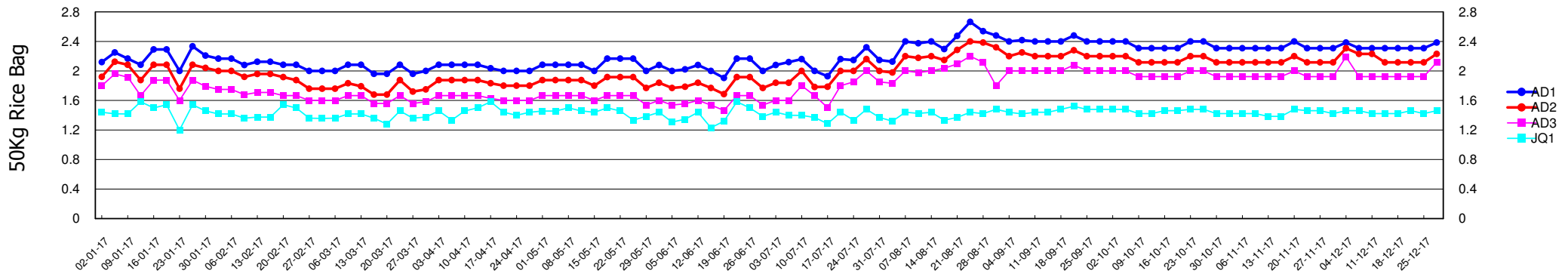




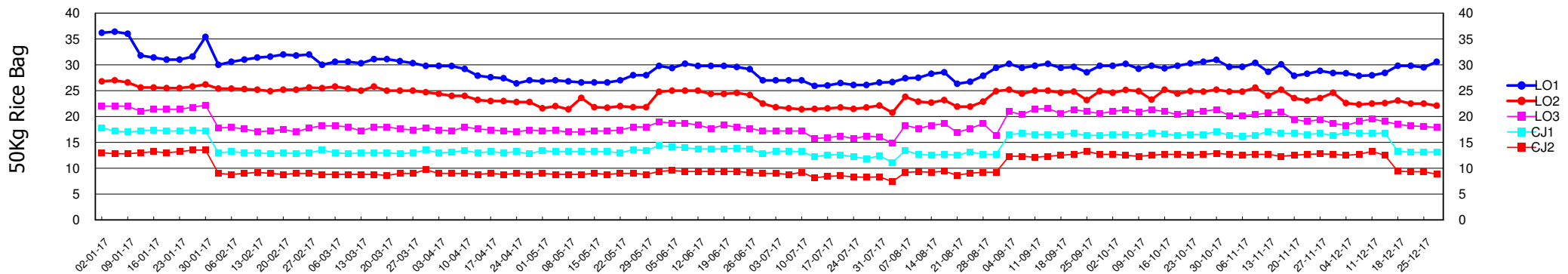
Terms of Trade : Number of 50Kg Rice Bags bought from sale of one export quality small ruminant in Hargeisa



Terms of Trade : Number of 50Kg Rice Bags bought from sale of one export quality small ruminant in Burao



Terms of Trade : Number of 50Kg Rice Bags bought from sale of one export quality cattle in Tog Wajaale



* Please refer to the data explanatory key in the first page

Funded by :



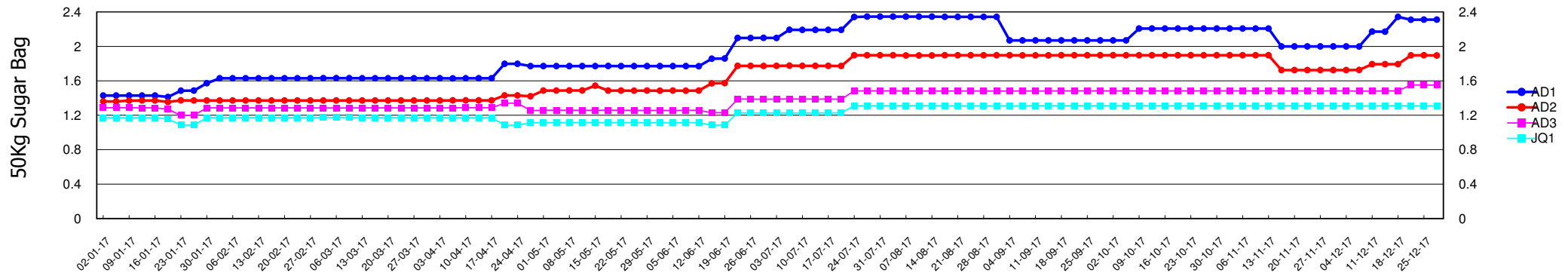
Implemented by :



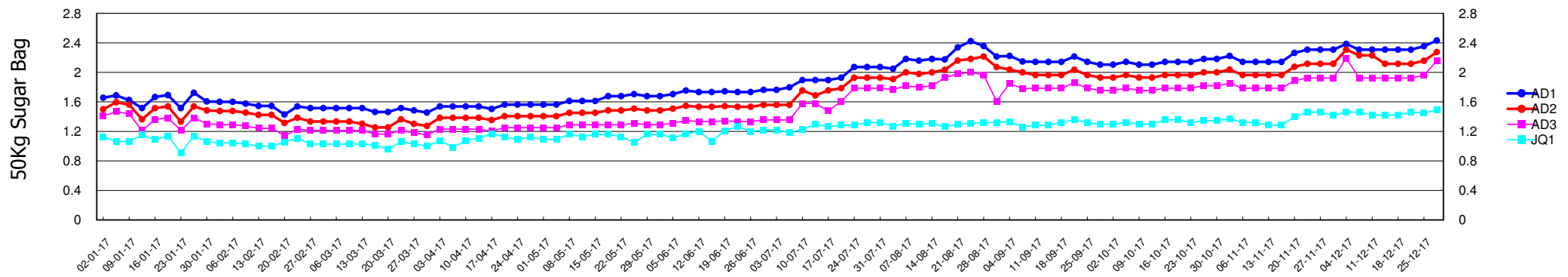
DATA STATISTICALLY VALIDATED

Visit www.somalilandchamber.com for more details

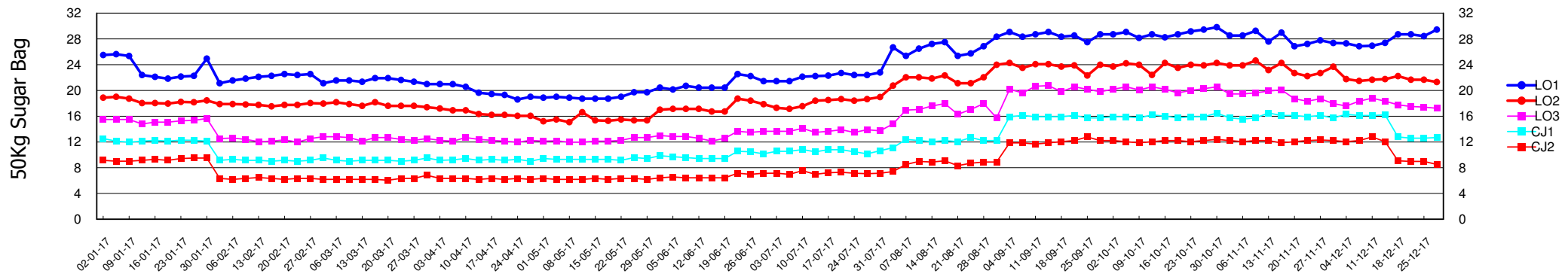
Terms of Trade : Number of 50Kg Sugar Bags bought from sale of one export quality small ruminant in Hargeisa



Terms of Trade : Number of 50Kg Sugar Bags bought from sale of one export quality small ruminant in Burao



Terms of Trade : Number of 50Kg Sugar Bags bought from sale of one export quality cattle in Tog Wajaale



* Please refer to the data explanatory key in the first page



Funded by :

Implemented by:

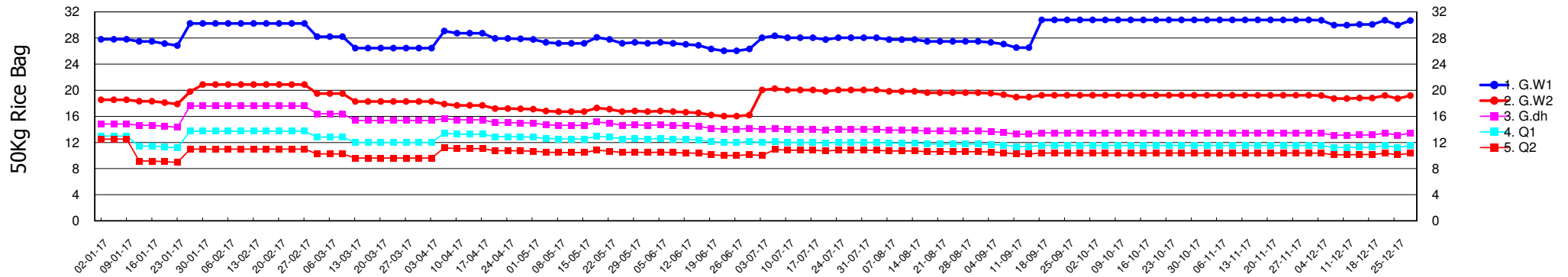


DATA STATISTICALLY VALIDATED

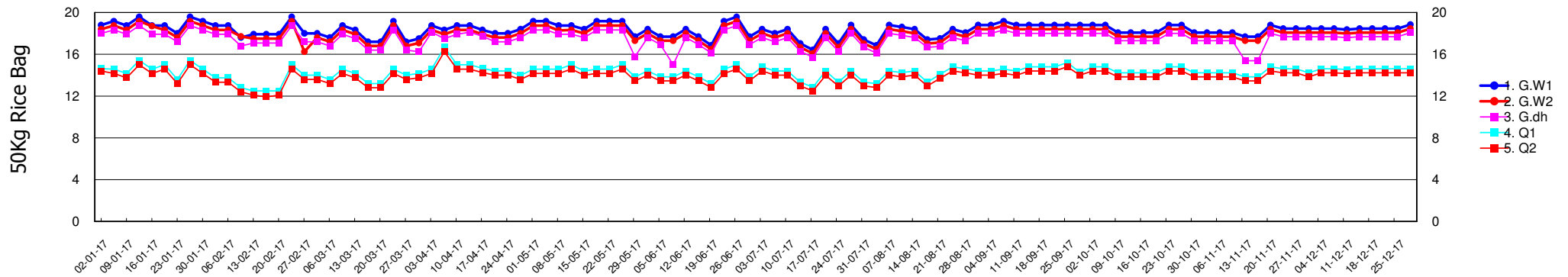
Visit www.somalilandchamber.com for more details



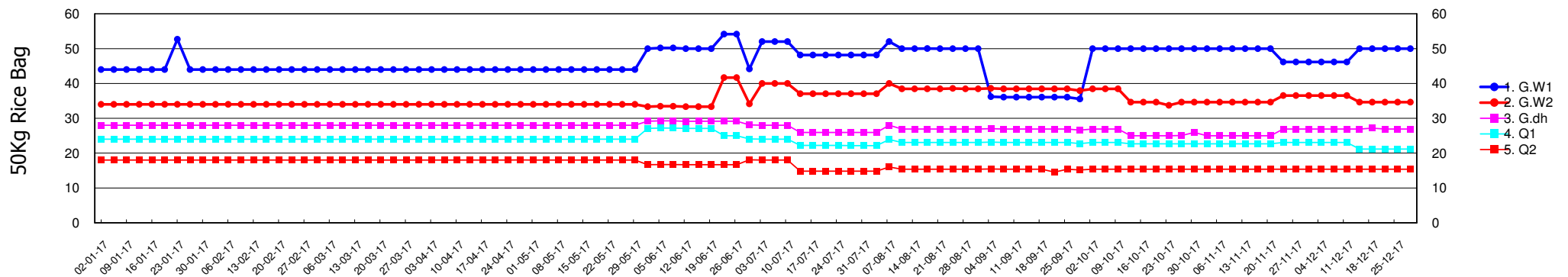
Terms of Trade : Number of 50Kg Rice Bags bought from sale of one export quality camel in Hargeisa



Terms of Trade : Number of 50Kg Rice Bags bought from sale of one export quality camel in Burao



Terms of Trade : Number of 50Kg Rice Bags bought from sale of one export quality camel in Tog Wajaale



* Please refer to the data explanatory key in the first page



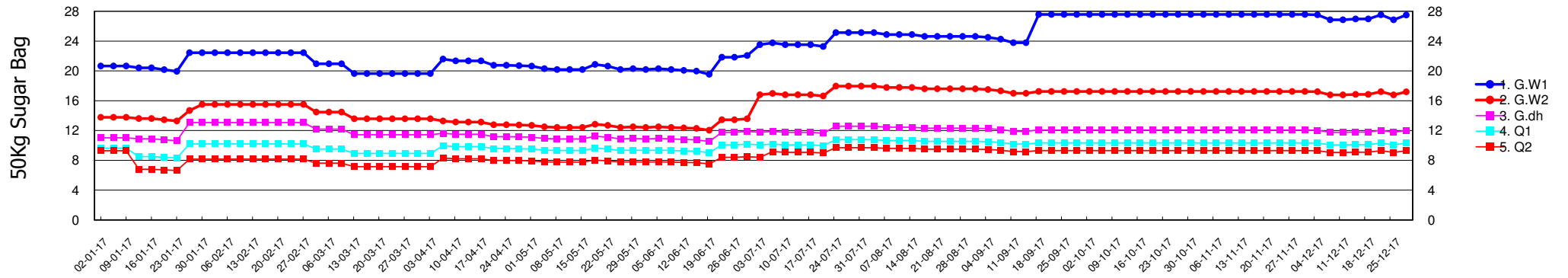
Implemented by:



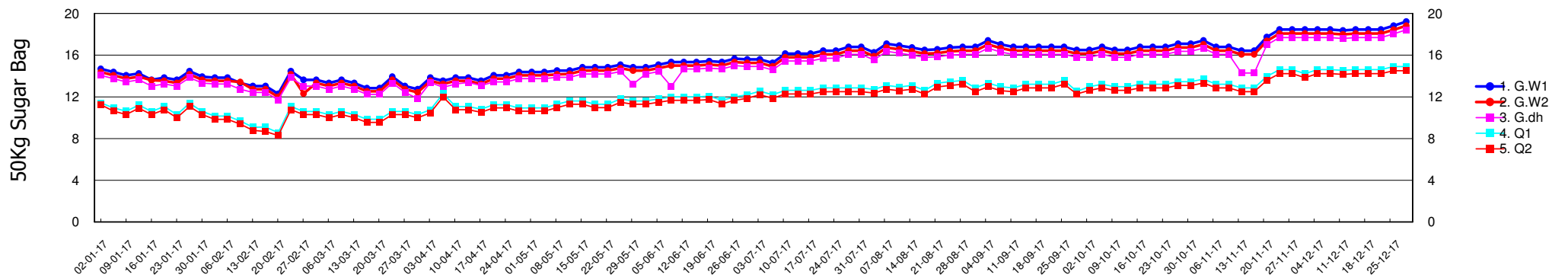
DATA STATISTICALLY VALIDATED

Visit www.somalilandchamber.com for more details

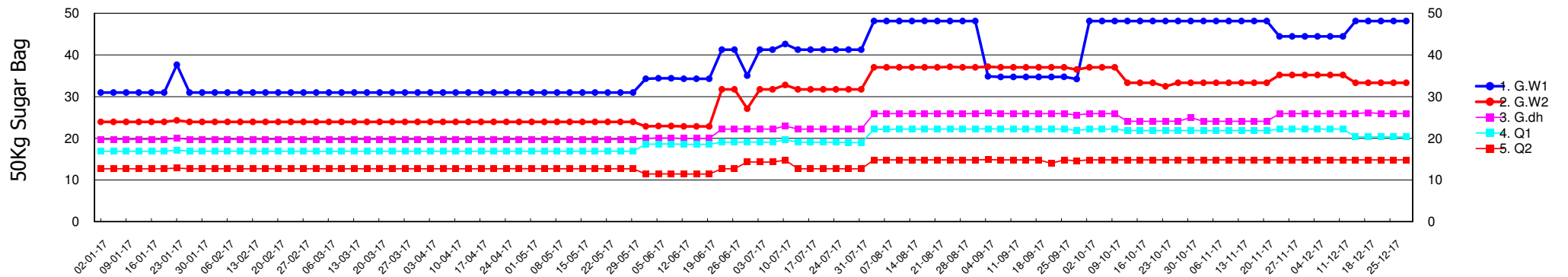
Terms of Trade : Number of 50Kg Sugar Bags bought from sale of one export quality camel in Hargeisa



Terms of Trade : Number of 50Kg Sugar Bags bought from sale of one export quality camel in Burao



Terms of Trade : Number of 50Kg Sugar Bags bought from sale of one export quality camel in Tog Wajaale



Funded by :

Implemented by:



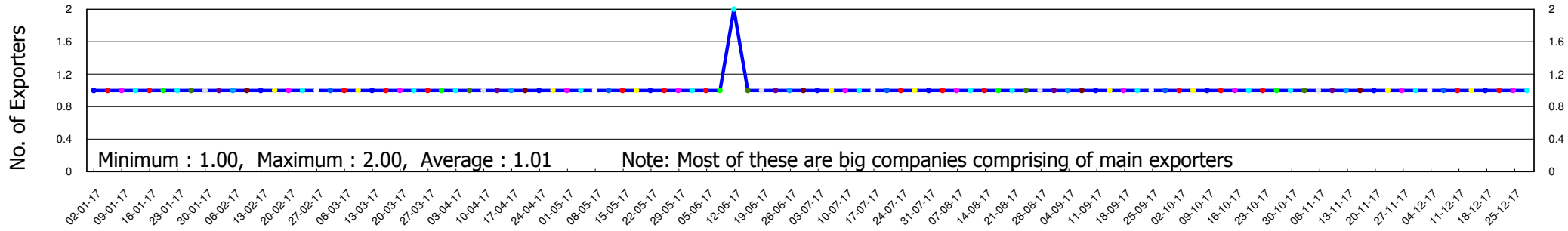
* Please refer to the data explanatory key in the first page

DATA STATISTICALLY VALIDATED

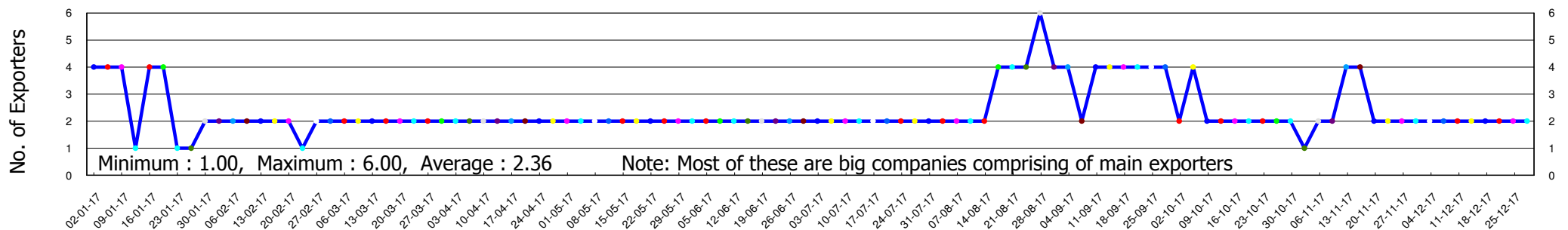
Visit www.somalilandchamber.com for more details



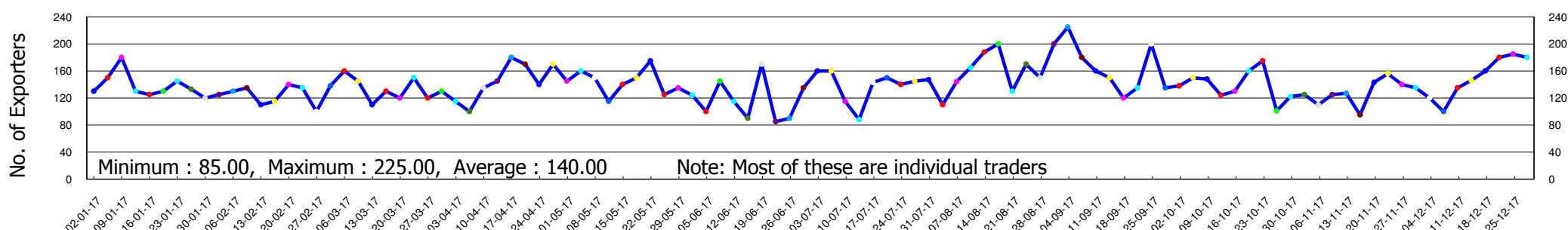
Hargeisa - Number of Exporters Present in the Market



Burao - Number of Exporters Present in the Market



Tog Wajaale - Number of Exporters Present in the Market



* Please refer to the data explanatory key in the first page

Funded by :



Implemented by:

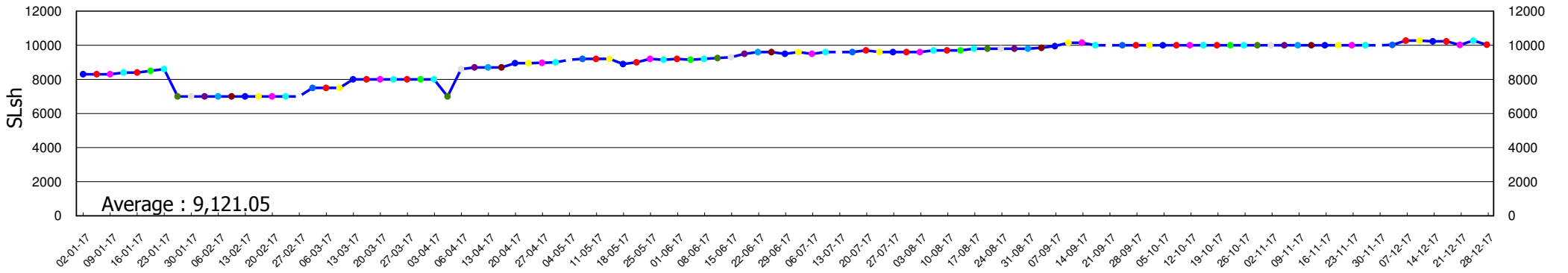


DATA STATISTICALLY VALIDATED

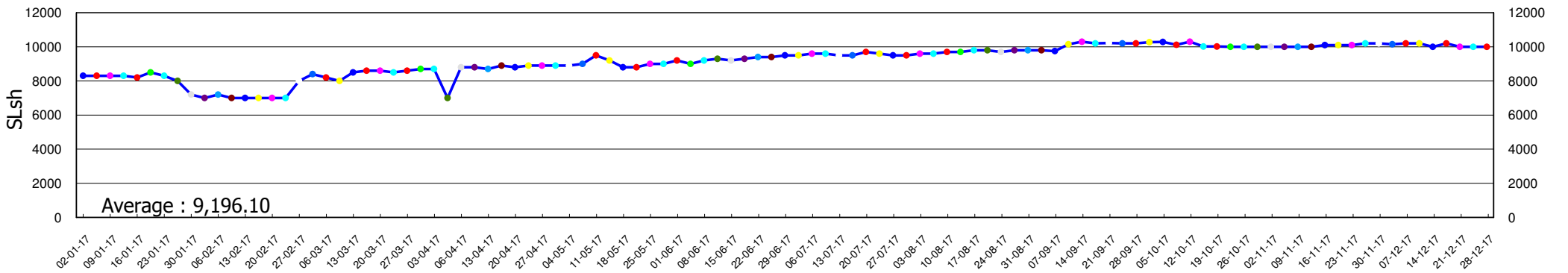
Visit www.somalilandchamber.com for more details



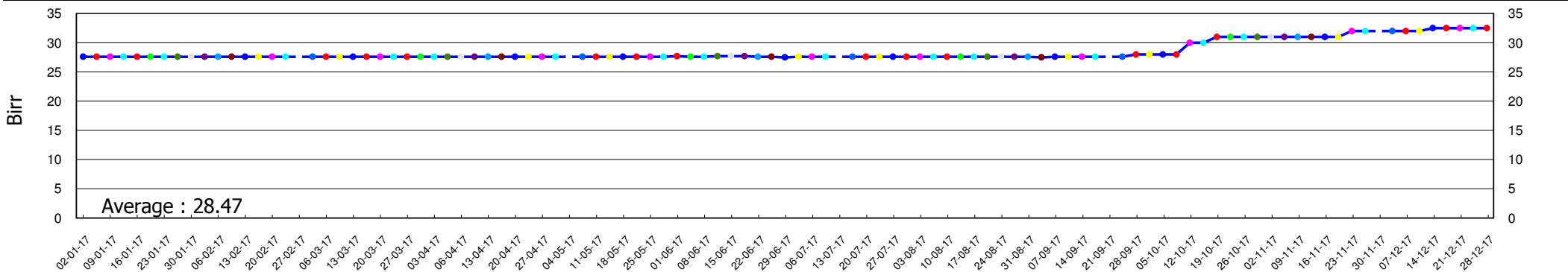
Hargeisa - Currency Exchange Rates for 1US\$ to SLsh



Burao - Currency Exchange Rates for 1US\$ to SLsh



Tog Wajaale - Currency Exchange Rates for 1US\$ to Birr



* Please refer to the data explanatory key in the first page

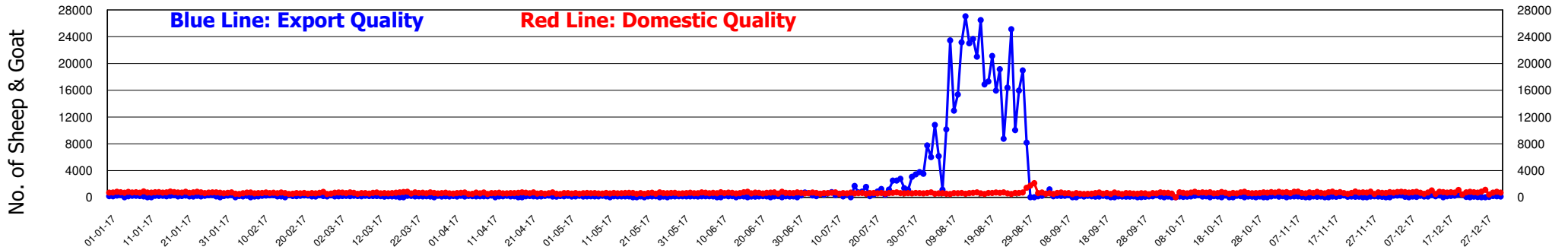


DATA STATISTICALLY VALIDATED

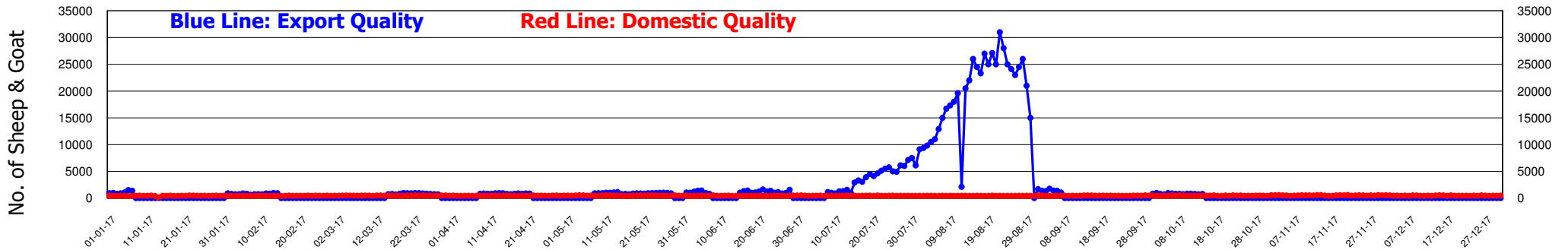
Visit www.somalilandchamber.com for more details



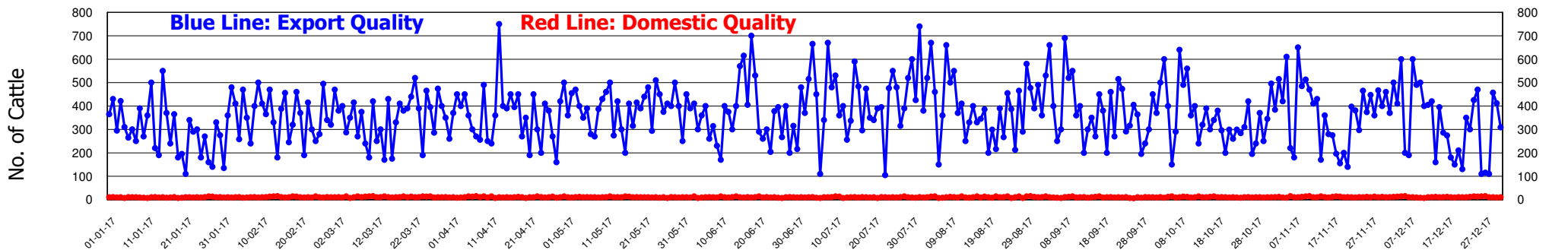
Hargeisa - Number of Sheep & Goats Marketed (Export & Domestic Quality) in the period



Burao - Number of Sheep & Goats Marketed (Export & Domestic Quality) in the period



Tog Wajaale - Number of Cattle Marketed (Export & Domestic Quality) in the period



* Please refer to the data explanatory key in the first page

Funded by :



Implemented by:

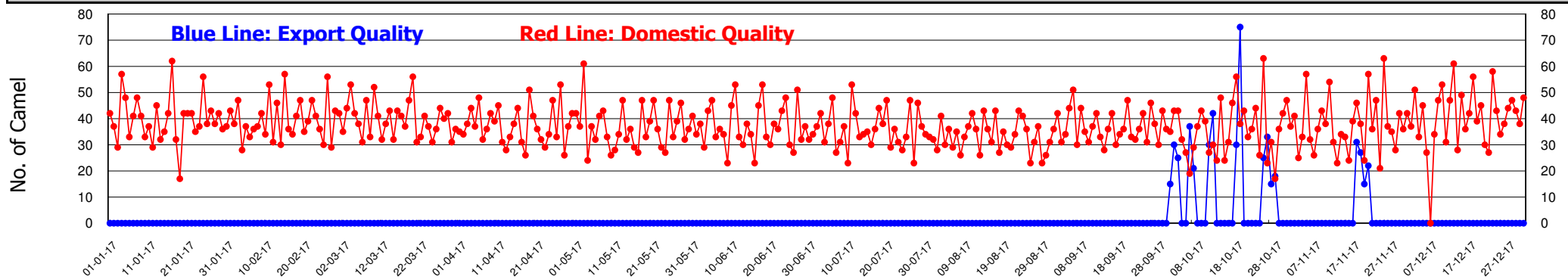


DATA STATISTICALLY VALIDATED

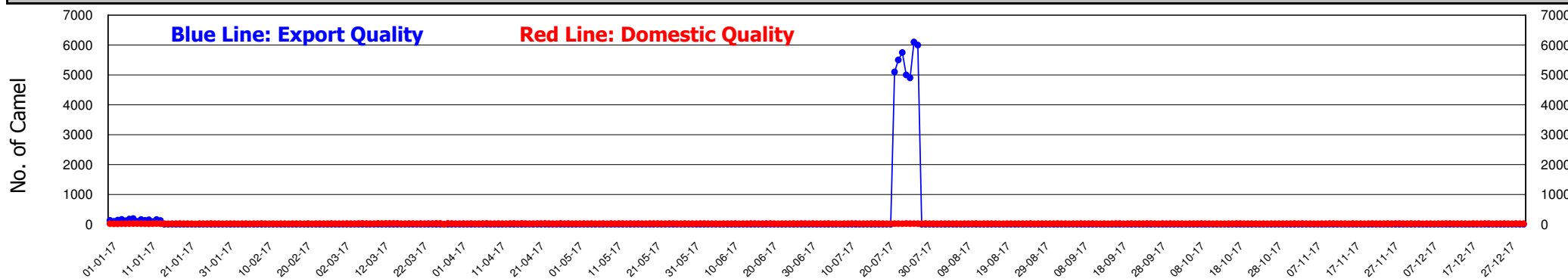
Visit www.somalilandchamber.com for more details



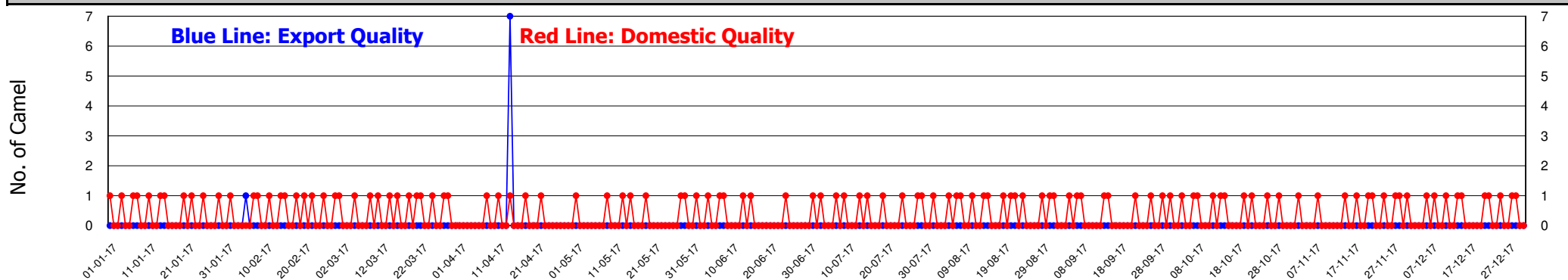
Hargeisa - Number of Camels Marketed (Export & Domestic Quality) in the period



Burao - Number of Camels Marketed (Export & Domestic Quality) in the period



Tog Wajaale - Number of Camels Marketed (Export & Domestic Quality) in the period



* Please refer to the data explanatory key in the first page

Funded by :



Implemented by:



DATA STATISTICALLY VALIDATED

Visit www.somalilandchamber.com for more details



Hargeisa - Total Number of Animals Marketed (Export & Domestic Quality) Blue Values: Export Quality Red Values: Domestic Quality

	Jan-17	Feb-17	Mar-17	Apr-17	May-17	Jun-17	Jul-17	Aug-17	Sep-17	Oct-17	Nov-17	Dec-17	Total
No. of Camels	0	0	0	0	0	0	0	0	0	396	95	0	491
	1,228	1,106	1,229	1,122	1,141	1,108	1,117	1,030	1,110	1,112	1,116	1,253	13,672
No. of Sheep & Goats	5,252	5,062	4,258	4,085	3,338	3,026	31,184	438,978	5,045	2,932	2,555	4,084	509,799
	22,418	17,087	19,977	18,156	18,480	19,550	19,023	22,280	17,188	19,716	20,906	22,703	237,484

Burao - Total Number of Animals Marketed (Export & Domestic Quality) Blue Values: Export Quality Red Values: Domestic Quality

	Jan-17	Feb-17	Mar-17	Apr-17	May-17	Jun-17	Jul-17	Aug-17	Sep-17	Oct-17	Nov-17	Dec-17	Total
No. of Camels	1,937	0	0	0	0	0	38,350	0	0	0	0	0	40,287
	644	588	755	728	717	675	685	648	671	666	672	686	8,135
No. of Sheep & Goats	7,480	10,978	11,390	11,560	19,035	24,330	93,430	589,350	9,860	11,135	0	0	788,548
	12,750	11,710	13,856	13,005	14,085	12,746	13,263	12,795	13,120	13,685	14,610	13,805	159,430

Tog Wajaale - Total Number of Animals Marketed (Export & Domestic Quality) Blue Values: Export Quality Red Values: Domestic Quality

	Jan-17	Feb-17	Mar-17	Apr-17	May-17	Jun-17	Jul-17	Aug-17	Sep-17	Oct-17	Nov-17	Dec-17	Total
No. of Camels	0	1	0	7	0	0	0	0	0	0	0	0	8
	11	11	12	5	7	7	10	13	9	11	9	11	116
No. of Cattle	8,996	10,052	10,792	10,931	11,985	10,804	13,143	12,440	11,489	10,948	11,147	10,388	133,115
	301	299	352	320	320	305	307	337	301	323	337	342	3,844



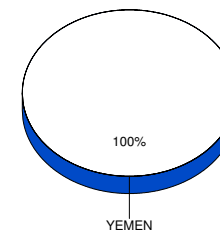
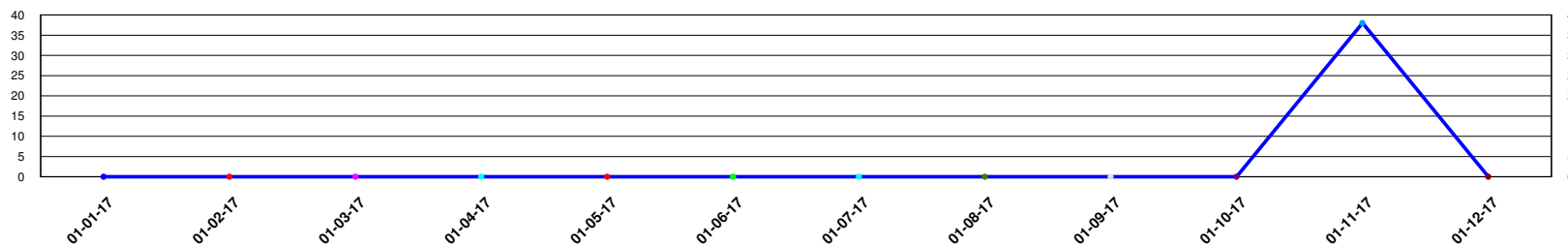


Total number of heads exported from Berbera port (Source: Berbera Port Authority)

	Jan-17	Feb-17	Mar-17	Apr-17	May-17	Jun-17	Jul-17	Aug-17	Sep-17	Oct-17	Nov-17	Dec-17	Total
Camels	0	0	0	0	0	0	0	0	0	0	38	0	38
Cattle	12,205	7,402	9,139	6,334	7,619	8,782	11,087	20,375	7,817	3,871	5,327	7,652	107,610
Sheep & Goats	17,570	3,846	13,510	1,972	40,104	28,186	44,871	1,137,338	13,065	10,788	4,484	11,451	1,327,185
Total	29,775	11,248	22,649	8,306	47,723	36,968	55,958	1,157,713	20,882	14,659	9,849	19,103	1,434,833

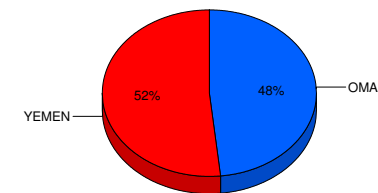
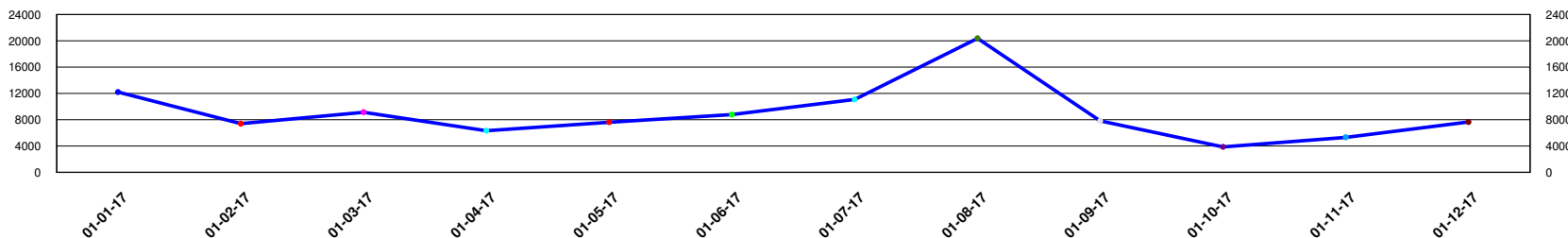
Number of Camels exported and percentage according to country of destination

0.00%



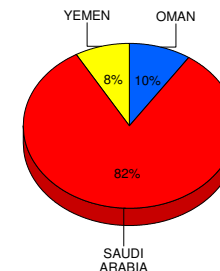
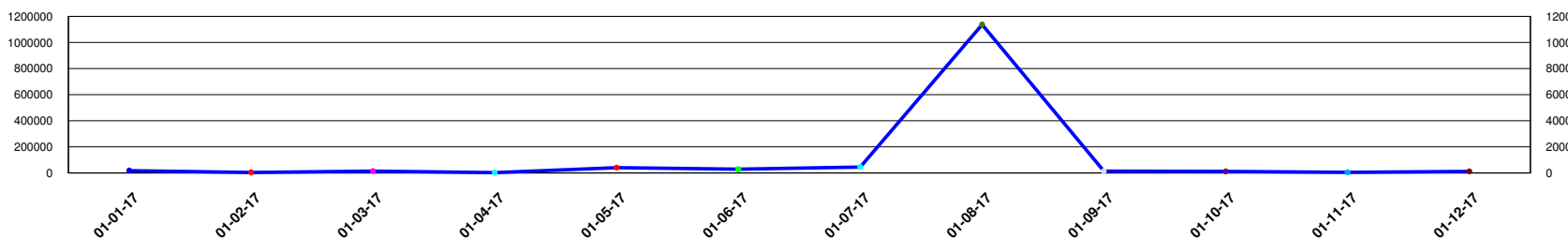
Number of Cattle exported and percentage according to country of destination

7.50%



Number of Sheep & Goats exported and percentage according to country of destination

92.50%



Funded by :

Implemented by :



* Please refer to the data explanatory key in the first page

DATA STATISTICALLY VALIDATED

Visit www.somalilandchamber.com for more details



Livestock exported to OMAN from Berbera port according to vessel capacity & destinations (Source: Berbera Port Authority)

Vessel Name	Ship Capacity (In Tons)	Trips Made	Total Shoats	Total Cattle	Total Camels	Total Heads
S/K KRUSHNA	775	1	0	500	0	500
S/K AL AQSA	711	1	0	500	0	500
S/K HASSEN	881	1	4,704	0	0	4,704
S/K HIJRAT	800	2	0	972	0	972
S/K IID MOHAMOUD	658	2	0	990	0	990
S/K IMARRAT	890	3	4,520	1,089	0	5,609
S/K IMRAN	740	1	0	500	0	500
S/K JEEIRI	780	1	4,891	0	0	4,891
S/K JUNEIS	800	1	0	490	0	490
S/K JUWEIRIYA	760	1	0	535	0	535
S/K AL HAROON	1,850	2	391	485	0	876
S/K YASEEN 1	770	3	4,829	999	0	5,828
S/K KOSHAH	706	1	0	510	0	510
S/K GOUSHE MOHAYADIN	1,010	1	0	455	0	455
S/K KRUSHNA LILA	800	1	0	500	0	500
S/K MADAF	890	1	0	489	0	489
S/K AL HAMSA	619	2	0	1,000	0	1,000
S/K MANSCHA ALAH	540	2	0	985	0	985
S/K AL SAEED 2	750	1	0	356	0	356
S/K MARWAH	850	1	0	450	0	450
S/K HAJI MALANG	800	1	0	494	0	494
S/K AL DAHAB	2,100	2	4,975	500	0	5,475
S/K MEHRAAB	865	1	5,000	0	0	5,000
S/K MOHAMED	777	1	4,555	0	0	4,555
S/K KHISNA	700	1	0	496	0	496
S/K DAYIBO	610	3	4,330	988	0	5,318
S/K AL NOUR	775	2	0	1,013	0	1,013
S/K AL SHAAM	828	1	4,106	0	0	4,106

* Please refer to the data explanatory key in the first page

Funded by :



Implemented by:



DATA STATISTICALLY VALIDATED

Visit www.somalilandchamber.com for more details

Livestock exported to OMAN from Berbera port according to vessel capacity & destinations (Source: Berbera Port Authority)

Vessel Name	Ship Capacity (In Tons)	Trips Made	Total Shoats	Total Cattle	Total Camels	Total Heads
S/K AL SHAFAF	781	1	0	499	0	499
S/K AL NASAR	600	1	0	570	0	570
S/K AL YASIIN	450	1	0	520	0	520
S/K AL MUNIIRA	921	1	0	508	0	508
S/K ALI HAIDAR	850	1	0	500	0	500
S/K ALI MADAT	666	1	0	477	0	477
S/K AMIIR ALI	875	1	0	501	0	501
S/K BAQDADI	775	1	0	489	0	489
S/K AL HASSAN	850	5	4,233	2,068	0	6,301
S/K AL MEHBUB	500	1	0	492	0	492
S/K AL FAZZEL	840	1	0	478	0	478
S/K FAIS AL QADARIA	705	1	4,500	0	0	4,500
S/K FAIS HAJI MALAG	900	2	4,344	495	0	4,839
S/K FAIS NOORI SULEIMANI	820	2	4,815	501	0	5,316
S/K FAIZ HASHIMI	890	1	4,698	0	0	4,698
S/K FAIZANE CHISTI	699	1	0	500	0	500
S/K FAIZE SULDAN	700	2	0	968	0	968
S/K AL MANUR	750	1	3,113	0	0	3,113
S/K AL KHALIJI	650	2	0	987	0	987
S/K GOSE AAZAM	720	2	4,398	474	0	4,872
S/K GOUSHA NOORI	655	2	0	1,199	0	1,199
S/K AL MOHAMED	689	2	4,930	707	0	5,637
S/K SHREE NARYAN	705	1	4,539	0	0	4,539
S/K NOORE MARYAM	690	2	3,500	697	0	4,197
S/K SIRAAJI	621	2	0	1,028	0	1,028
S/K NOORE SALAM	980	3	5,000	1,067	0	6,067
S/K SHREE SHIVE SHAKTI	557	1	0	500	0	500
S/K NOORI	950	3	4,595	1,044	0	5,639
M/V HAJH GHSNJ	2,105	1	2,403	0	0	2,403
S/K NOORI SULEIMANI	600	1	0	498	0	498
S/K OBAID 10	890	1	0	518	0	518

Livestock exported to OMAN from Berbera port according to vessel capacity & destinations (Source: Berbera Port Authority)

Vessel Name	Ship Capacity (In Tons)	Trips Made	Total Shoats	Total Cattle	Total Camels	Total Heads
S/K NUMCAAN	855	1	0	590	0	590
S/K NOORE AL AHMED	782	1	0	501	0	501
S/K AL AMIIR	420	1	0	494	0	494
S/K SHARIIF	450	1	4,512	0	0	4,512
S/K SHAMAC	787	1	0	478	0	478
S/K RAHET	690	1	0	467	0	467
S/K SAGAR SAMRAT	500	1	0	500	0	500
S/K RAHMA	775	2	0	960	0	960
S/K RAHMAT	710	3	0	1,572	0	1,572
S/K NOORI ZAMUDINI	800	4	0	2,002	0	2,002
S/K TOWFIQ 1	777	1	0	500	0	500
S/K MUHAYADIIN	810	1	0	505	0	505
S/K YAKUUB	745	3	9,299	489	0	9,788
S/K MUKHDUM	687	1	0	495	0	495
S/K WALIID	820	4	4,294	1,495	0	5,789
S/K AHMED -1	750	1	0	595	0	595
S/K WAHIIBA	710	1	0	581	0	581
S/K MUTAWAKAL	500	2	0	1,008	0	1,008
M/V NOBA 1	926	2	2,688	1,777	0	4,465
S/K NARAYAAN	801	1	4,523	0	0	4,523
S/K TALAAT	1,109	1	0	480	0	480
S/K SULDAN MAHDI	855	1	0	510	0	510
S/K NASIR	550	3	0	1,437	0	1,437
S/K NAWAL	976	1	4,145	0	0	4,145
S/K NOOR ALUSMANI	666	1	0	488	0	488
S/K MULA OMER	775	1	0	515	0	515
Sub Total :			126,830	52,020	0	178,850

Livestock exported to SAUDI ARABIA from Berbera port according to vessel capacity & destinations (Source: Berbera Port Authority)

Vessel Name	Ship Capacity (In Tons)	Trips Made	Total Shoats	Total Cattle	Total Camels	Total Heads
M/V AL IIMAN	3,556	2	68,960	0	0	68,960
M/V BARAKO 1	4,605	1	40,000	0	0	40,000
M/V BARAKO 3	4,182	2	51,629	0	0	51,629
M/V BARAKAAT	2,547	1	22,974	0	0	22,974
M/V BARAKO 5	15,575	3	213,980	0	0	213,980
M/V BARAKO 7	1,202	1	13,733	0	0	13,733
M/V MALAK 1	2,332	1	19,419	0	0	19,419
M/V FAHED	2,511	2	42,246	0	0	42,246
M/V FARAH 1	1,679	2	47,137	0	0	47,137
M/V ADEL 1	8,283	4	194,348	0	0	194,348
M/V LILY J	6,415	2	127,092	0	0	127,092
M/V TRUST 1	2,973	4	102,727	0	0	102,727
M/V TAIBA	4,033	3	143,948	0	0	143,948
Sub Total :			1,088,193	0	0	1,088,193

Livestock exported to YEMEN from Berbera port according to vessel capacity & destinations (Source: Berbera Port Authority)

Vessel Name	Ship Capacity (In Tons)	Trips Made	Total Shoats	Total Cattle	Total Camels	Total Heads
S/K AL SAEED	550	2	925	544	0	1,469
S/K AKBARI	620	1	215	309	0	524
S/K AL BASIL 1	787	2	1,576	615	0	2,191
S/K AL HAMDULILAH	650	1	0	358	0	358
S/K AL MUNIR	670	1	210	459	0	669
M/V NOBA 2	1,046	12	31,674	13,495	0	45,169
S/K AL HAMSA	619	1	0	500	0	500
S/K AL KAHAIR	550	1	396	0	0	396
S/K AL MUKHTARI	850	2	658	678	38	1,374
S/K AL MAYAN	550	1	1,009	0	0	1,009
S/K AL MUBARIK	570	2	195	881	0	1,076
S/K AL HAROON	1,850	1	0	689	0	689

* Please refer to the data explanatory key in the first page

DATA STATISTICALLY VALIDATED
Visit www.somalilandchamber.com for more details

Livestock exported to YEMEN from Berbera port according to vessel capacity & destinations (Source: Berbera Port Authority)

Vessel Name	Ship Capacity (In Tons)	Trips Made	Total Shoats	Total Cattle	Total Camels	Total Heads
S/K AL HASSAN	850	2	0	1,198	0	1,198
S/K AL FARDOOS	550	1	150	208	0	358
S/K AL KHAYRAAT	450	1	130	243	0	373
M/V NOBA 1	926	14	27,277	13,838	0	41,115
S/K NOORENI DASTAGIR	789	1	3,984	0	0	3,984
S/K HAJI ISMAIL	980	2	5,085	603	0	5,688
S/K MOHBOOB	550	1	120	0	0	120
S/K MUBARIK	820	3	1,369	1,038	0	2,407
S/K MUJTAMAD	550	1	58	259	0	317
S/K MUKHDUM	687	1	0	696	0	696
S/K MUKULA	689	1	56	822	0	878
S/K MUTAWAKAL	500	1	158	215	0	373
S/K NARULDIIN	650	2	671	381	0	1,052
S/K NASRUL ISLAM	620	1	93	296	0	389
S/K MATAFI	670	3	1,680	988	0	2,668
S/K NOORE NABUWAT	870	1	0	705	0	705
S/K MARWAN 2	690	1	148	1,032	0	1,180
S/K NOORI MARWAH	812	1	0	664	0	664
S/K QASIM	720	1	0	527	0	527
S/K RAHET	690	1	1,320	1,050	0	2,370
S/K SADIQ	512	1	1,009	0	0	1,009
S/K SAFA	680	4	2,145	2,086	0	4,231
S/K SAPIR	840	1	4,203	0	0	4,203
S/K SIRAAJI	621	2	1,690	635	0	2,325
S/K SKY BARAKO	550	1	200	0	0	200
S/K TAWAKAL	665	1	248	197	0	445
S/K NOORA AL ISLAM	556	2	743	497	0	1,240
S/K FALLASI	711	1	1,840	287	0	2,127
S/K AL SAFA	550	1	120	287	0	407
S/K AL SHIRAZI	800	2	5,223	178	0	5,401
S/K AL YASIIN	450	1	500	0	0	500

Livestock exported to YEMEN from Berbera port according to vessel capacity & destinations (Source: Berbera Port Authority)

Vessel Name	Ship Capacity (In Tons)	Trips Made	Total Shoats	Total Cattle	Total Camels	Total Heads
S/K AL YOUSUB	780	1	3,600	0	0	3,600
S/K AMIR ALI	880	1	245	387	0	632
S/K BAARI 2	510	1	676	0	0	676
S/K DAALO	550	1	702	0	0	702
S/K DAHA	450	3	338	1,091	0	1,429
S/K FAIZANE MOHAMED	745	1	0	644	0	644
S/K MATUF	540	1	1,244	320	0	1,564
S/K FAJAR 1	550	1	0	150	0	150
S/K AL SAEED 2	750	1	201	293	0	494
S/K GOUSHA VASHIL	840	1	550	910	0	1,460
S/K HAJI MAKKAH	750	1	0	618	0	618
S/K HARUUN	420	2	463	525	0	988
S/K ISMAIL	740	2	2,235	827	0	3,062
S/K KESHALI	800	1	1,940	0	0	1,940
S/K LUCKY	650	1	251	191	0	442
S/K MADAF	890	2	1,071	765	0	1,836
S/K MANSHA ALAH	540	1	624	86	0	710
S/K MARWAH	850	2	944	729	0	1,673
S/K FAIZMEH BOOB	852	1	0	596	0	596
Sub Total :			112,162	55,590	38	167,790

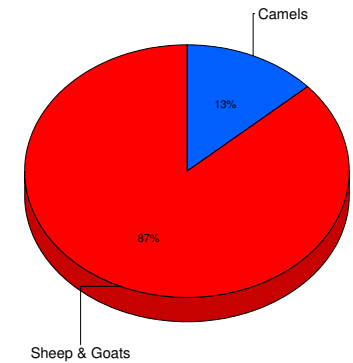
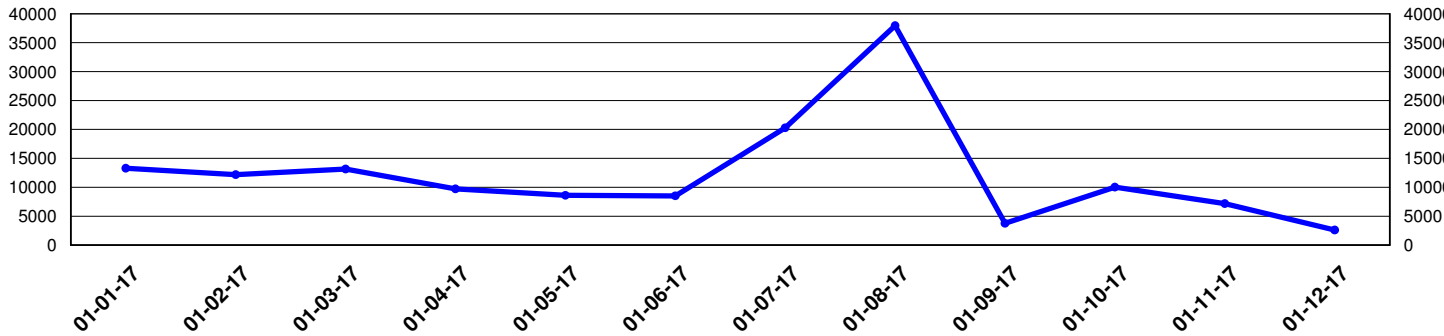
Grand Total : 1,327,185 107,610 38 1,434,833



Cross Border Trade with Djibouti through Lowya-Caddo (Source: Lowya-Caddo Customs Office)

	Jan-17	Feb-17	Mar-17	Apr-17	May-17	Jun-17	Jul-17	Aug-17	Sep-17	Oct-17	Nov-17	Dec-17	Total
Camels	1,084	1,437	1,014	575	564	316	345	2,256	188	4,396	6,383	1,120	19,678
Sheep & Goats	12,201	10,743	12,131	9,150	8,035	8,196	19,931	35,687	3,571	5,630	793	1,485	127,553
Total	13,285	12,180	13,145	9,725	8,599	8,512	20,276	37,943	3,759	10,026	7,176	2,605	147,231

Total Number of Animals Exported to Djibouti through Lowya Caddo during the period



* Please refer to the data explanatory key in the first page

DATA STATISTICALLY VALIDATED

Visit www.somalilandchamber.com for more details

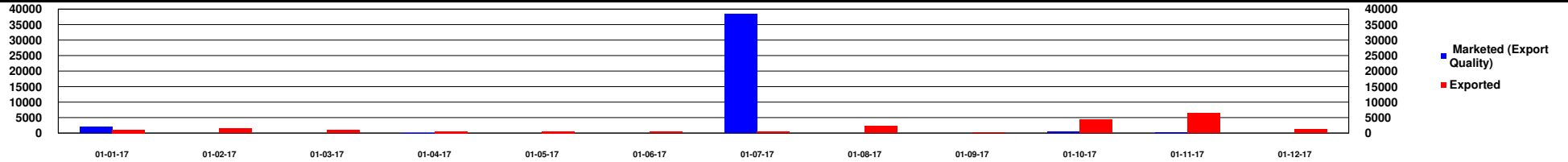


Comparison of monthly quantities of different species marketed (Export Quality Sheep, Goats and Camels in Hargeisa and Burao; Cattle & Camels in Tog Wajaale) and **Exported

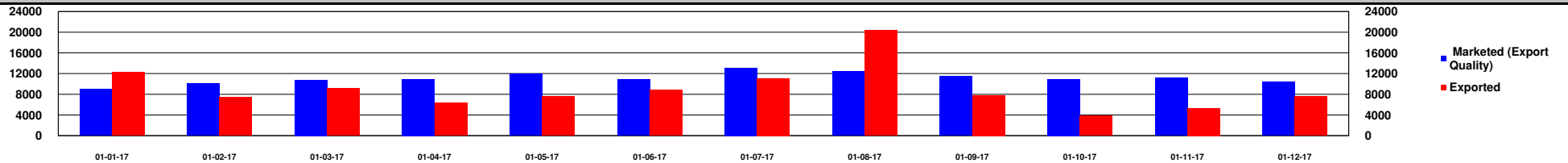
		Jan - 2017	Feb - 2017	Mar - 2017	Apr - 2017	May - 2017	Jun - 2017	Jul - 2017	Aug - 2017	Sep - 2017	Oct - 2017	Nov - 2017	Dec - 2017	Total Quantities
Camels	Marketed (Export Quality)	1,937	1	7				38,350			396	95		40,786
	Exported	1,084	1,437	1,014	575	564	316	345	2,256	188	4,396	6,421	1,120	19,716
Cattle	Marketed (Export Quality)	8,996	10,052	10,792	10,931	11,985	10,804	13,143	12,440	11,489	10,948	11,147	10,388	133,115
	Exported	12,205	7,402	9,139	6,334	7,619	8,782	11,087	20,375	7,817	3,871	5,327	7,652	107,610
Sheep & Goats	Marketed (Export Quality)	12,732	16,040	15,648	15,645	22,373	27,356	124,614	1,028,328	14,905	14,067	2,555	4,084	1,298,347
	Exported	29,771	14,589	25,641	11,122	48,139	36,382	64,802	1,173,025	16,636	16,418	5,277	12,936	1,454,738

**** Exported : Number of Animal Exported through Berbera Port and Lowya-Caddo**

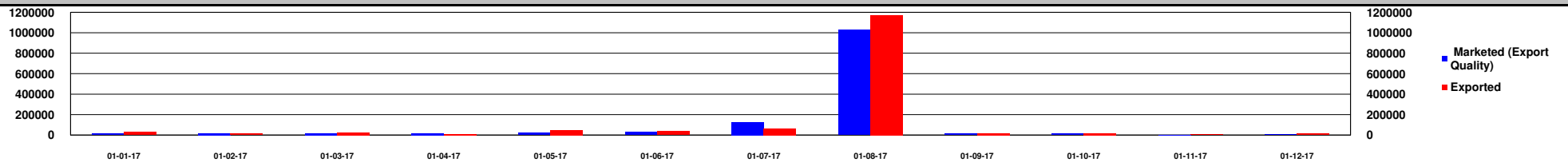
Comparison of monthly quantities of Camels Marketed (Export Quality in Hargeisa, Burao and Tog Wajaale) and **Exported



Comparison of monthly quantities of Cattle Marketed (Export Quality in Tog Wajaale) and **Exported



Comparison of monthly quantities of Sheep & Goats Marketed (Export Quality in Hargeisa and Burao) and **Exported



Implemented by:



* Please refer to the data explanatory key in the first page

DATA STATISTICALLY VALIDATED

Visit www.somalilandchamber.com for more details



Somaliland Chamber of Commerce, Industry and Agriculture

In Collaboration with Min. of Livestock, Min. of Commerce, Min. of Finance, Municipalities of Hargeisa, Burao, Tog Wajaale, Berbera Port Authority and H-Foods Ltd.

Yearly Report for the Period : 01-01-17 - 31-12-17

H-Foods Ltd.

NO CHILLED MEAT EXPORTED BY H-FOODS Ltd. DURING THE YEAR *

Funded by :



Implemented by:



* Please refer to the data explanatory key in the first page

DATA STATISTICALLY VALIDATED

Visit www.somalilandchamber.com for more details



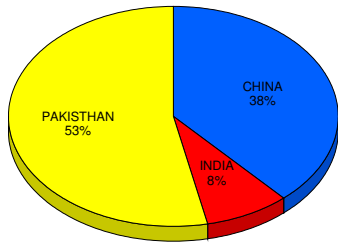
Hides & Skins Exported from Berbera Port and through Djibouti Port

Export Date	Type	SHEEP & GOATS		CATTLE		CAMEL	
		Qty	Weight (Kgs)	Qty	Weight (Kgs)	Qty	Weight (Kgs)
	DRY						
Jan 2017	DRY	171,000	136,800				
Feb 2017	DRY	121,400	97,120				
Mar 2017	DRY	121,400	97,120				
Apr 2017	DRY	100,876	80,700	19,124	152,992		
May 2017	DRY	51,200	40,960				
Jun 2017	DRY	36,950	29,560				
Jul 2017	DRY	133,000	106,400				
Aug 2017	DRY	77,000	61,600				
Sep 2017	DRY	117,000	93,600	2,550	20,400		
Oct 2017	DRY	37,400	29,920	6,100	48,800		
Nov 2017	DRY	164,000	131,200	7,200	57,600		
Dec 2017	DRY	141,100	112,480				
	Sub Total :	1,272,326	1,017,460	34,974	279,792		
	WET BLUE						
Jan 2017	WET BLUE	120,000	96,000				
Feb 2017	WET BLUE	120,000	96,000				
Mar 2017	WET BLUE	120,000	96,000				
Apr 2017	WET BLUE	72,000	57,600				
May 2017	WET BLUE	48,000	38,400				
Jun 2017	WET BLUE	72,000	57,600				
Jul 2017	WET BLUE	48,000	38,400				
Aug 2017	WET BLUE	72,000	57,600				

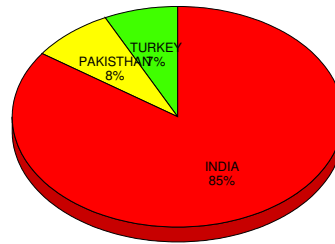
Sep 2017	WET BLUE	72,000	57,600				
Oct 2017	WET BLUE	48,000	38,400				
	Sub Total :	792,000	633,600				
	Grand Total :	2,064,326	1,651,060	34,974	279,792		

Destination of Hides & Skins Exported from Berbera Port and through Djibouti Port

SHEEP & GOATS

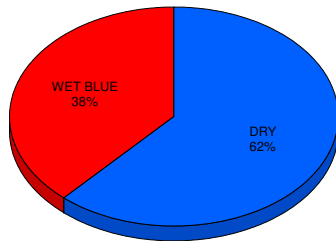


CATTLE



Type of Hides & Skins Exported from Berbera Port and through Djibouti Port

SHEEP & GOATS



CATTLE

