



## DATA EXPLANATORY KEY

### 0: ZERO

The figure may appear in graphs and tables of some sections of the report, such as: **total number of animals** (of different species) **marketed** (export and domestic quality) **in Hargeisa, Burao and Tog Wajaale, total number of heads (of different species) exported from Berbera port and cross-border trade with Djibouti through Lowya Caddo, Hides & Skins exported from Berbera Port.** Months when animals of a particular species of export or/and domestic quality are no traded in Hargeisa, Burao or Tog Wajaale are represented as 0 (ZERO) in the respective table/s. Zero values should be similarly considered in the tables of livestock export from Berbera port and cross border trade with Djibouti.

For any query please do not hesitate to contact the Somaliland Chamber of Commerce, Industry and Agriculture.

Contact Person:

**Mohamed Abdullahi Dirie**

Telephone:

**+252-2-523143**

Email Address:

**slcham93@gmail.com**

Please send us an e-mail for any request to be included in our mailing list for this monthly report.

Raw data are also available on request using the form on our web site.

For previous issues of this report please visit our web site:

**[WWW.SOMALILANDCHAMBER.COM](http://WWW.SOMALILANDCHAMBER.COM)**

Funded by :



Implemented by:

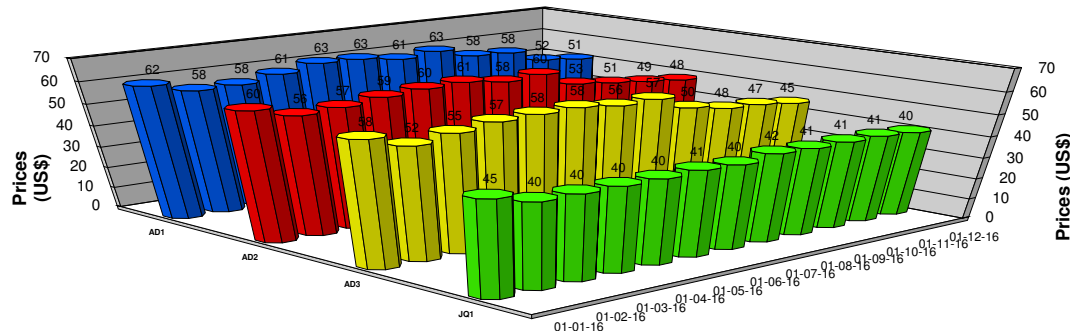


DATA STATISTICALLY VALIDATED

Visit [www.somalilandchamber.com](http://www.somalilandchamber.com) for more details

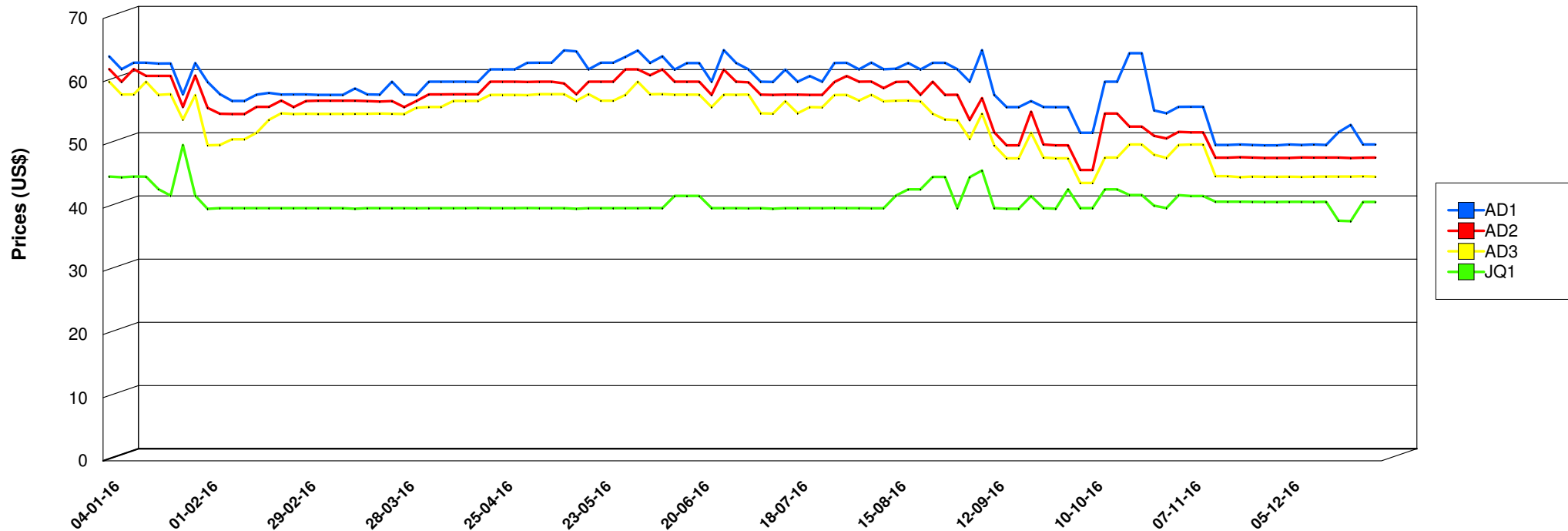


**Hargeisa - Small Ruminants Export Quality Prices in USD**



Code	Description	Yearly Average Price	Yearly Minimum Price	Yearly Maximum Price
AD1	Small Ruminants Grade 1	59.03	49.94	65.00
AD2	Small Ruminants Grade 2	55.96	46.03	62.00
AD3	Small Ruminants Grade 3	53.36	43.97	60.00
JQ1	Lambs/Kids Grade 1	40.96	37.93	50.00

Note: Prices represent the monthly average of prices from the respective market



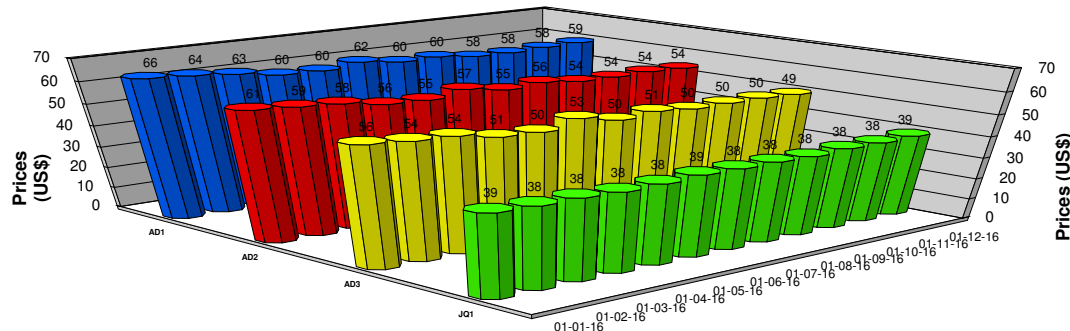
\* Please refer to the data explanatory key in the first page

DATA STATISTICALLY VALIDATED  
Visit [www.somalilandchamber.com](http://www.somalilandchamber.com) for more details



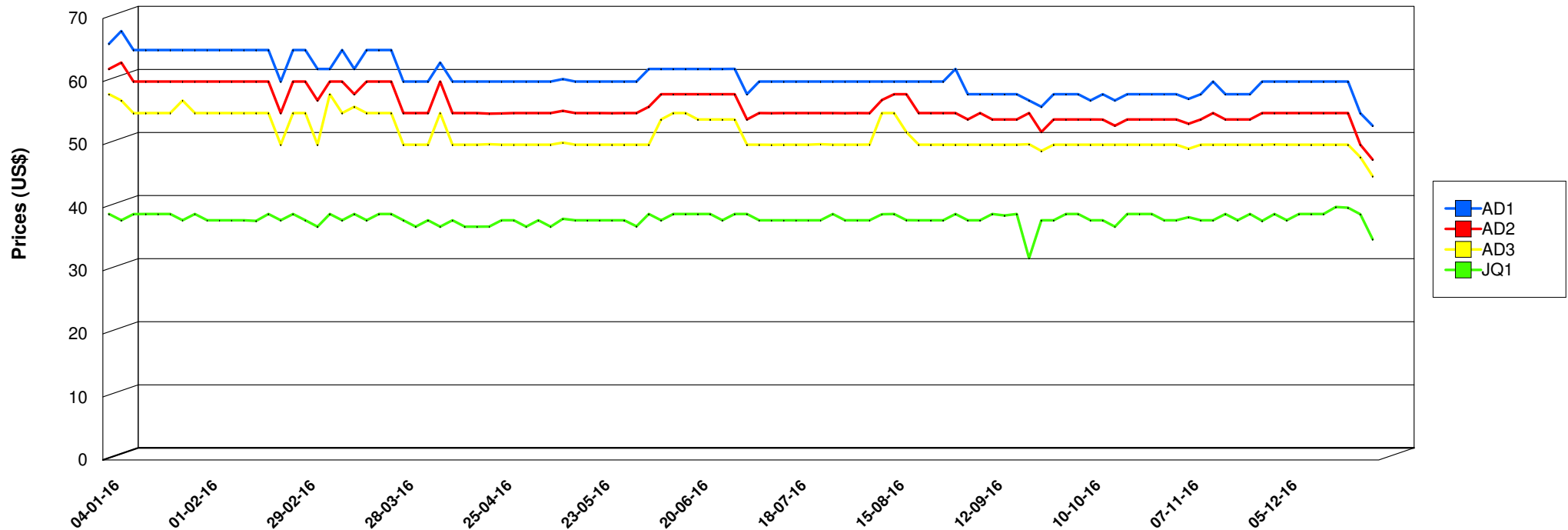


**Burao - Small Ruminants Export Quality Prices in USD**



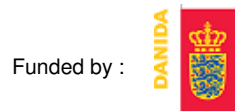
Code	Description	Yearly Average Price	Yearly Minimum Price	Yearly Maximum Price
AD1	Small Ruminants Grade 1	60.63	53.00	68.00
AD2	Small Ruminants Grade 2	56.08	47.64	63.00
AD3	Small Ruminants Grade 3	51.54	45.00	58.00
JQ1	Lambs/Kids Grade 1	38.23	32.00	40.13

Note: Prices represent the monthly average of prices from the respective market



\* Please refer to the data explanatory key in the first page

DATA STATISTICALLY VALIDATED  
Visit [www.somalilandchamber.com](http://www.somalilandchamber.com) for more details

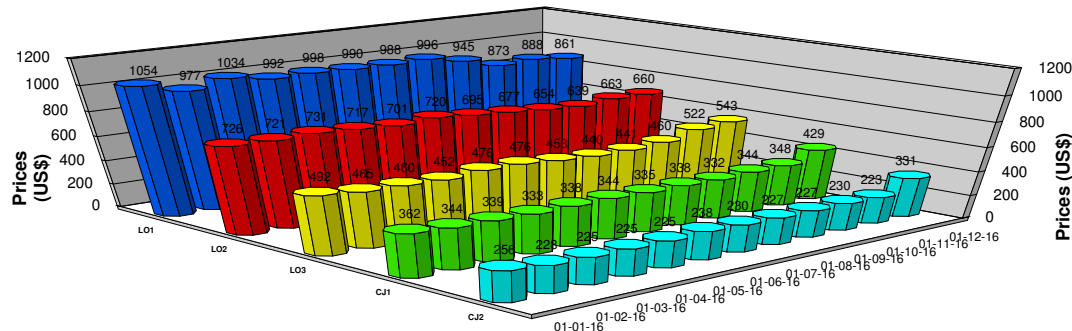


Implemented by:



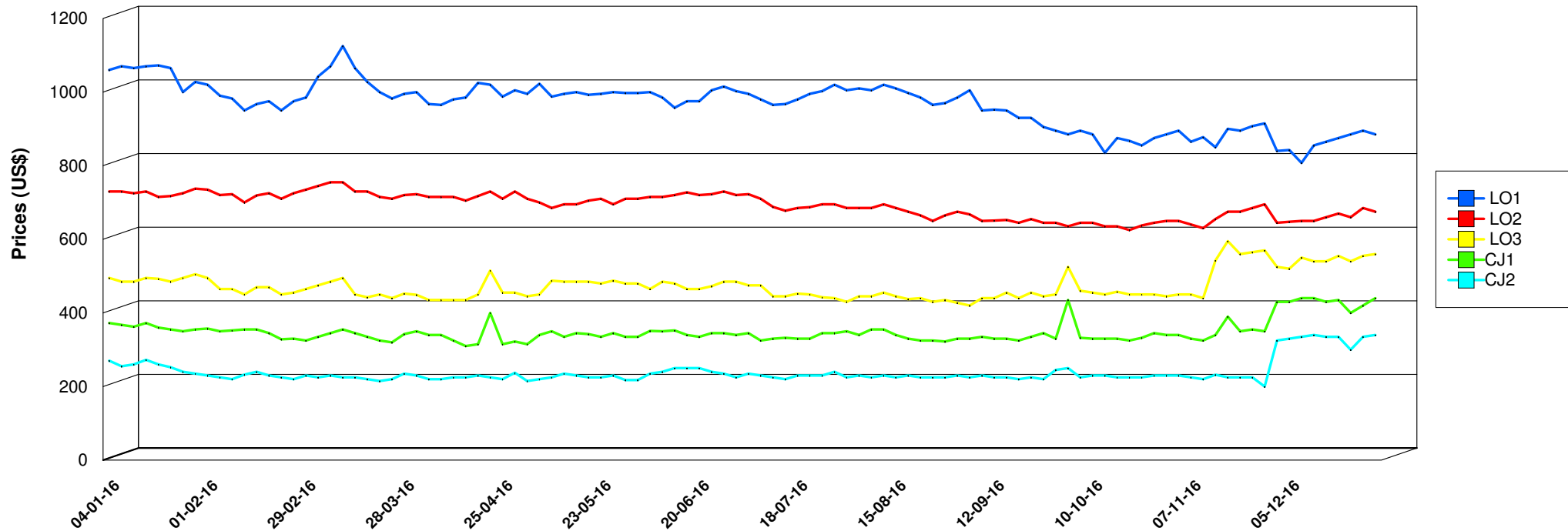


## Tog Wajaale - Cattle Export Quality Prices in USD



Note: Prices represent the monthly average of prices from the respective market

Code	Description	Yearly Average Price	Yearly Minimum Price	Yearly Maximum Price
LO1	Cattle Mature GR1	965.89	807.50	1,125.00
LO2	Cattle Mature GR2	691.76	625.00	755.00
LO3	Cattle Mature GR3	473.12	420.00	595.00
CJ1	Cattle Immature GR1	349.13	310.00	440.00
CJ2	Cattle Immature GR2	238.87	200.00	340.00



\* Please refer to the data explanatory key in the first page

DATA STATISTICALLY VALIDATED  
Visit [www.somalilandchamber.com](http://www.somalilandchamber.com) for more details

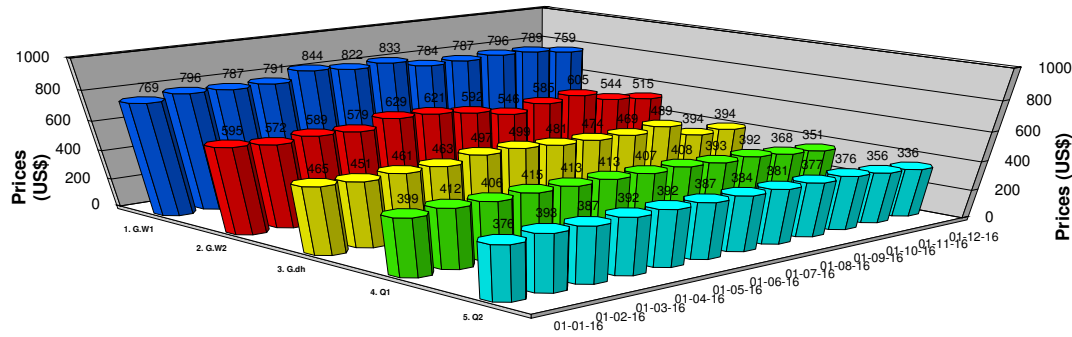


Implemented by:



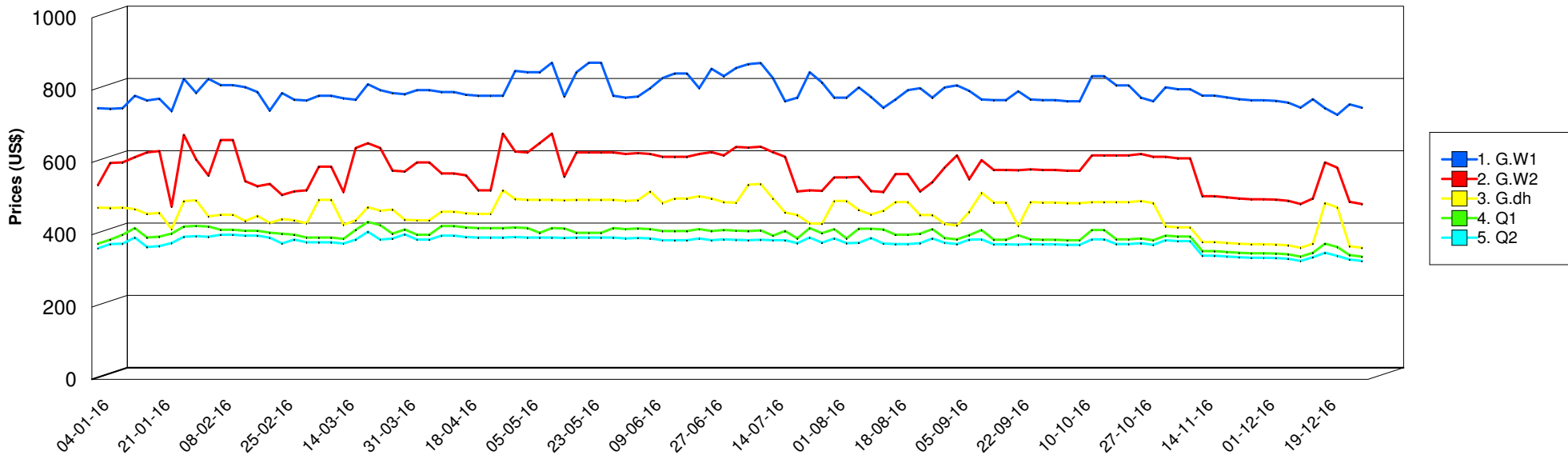


### Hargeisa - Camel Export Quality Prices in USD



Code	Description	Yearly Average Price	Yearly Minimum Price	Yearly Maximum Price
1. G.W1	Camel Mature GR1	796.36	731.71	875.82
2. G.W2	Camel Mature GR2	581.18	478.00	679.74
3. G.dh	Camel Intermediate	461.83	363.64	540.54
4. Q1	Camel Immature GR1	398.05	339.39	435.37
5. Q2	Camel Immature GR2	378.17	327.27	408.16

Note: Prices represent the monthly average prices from the respective market



\* Please refer to the data explanatory key in the first page



Implemented by:

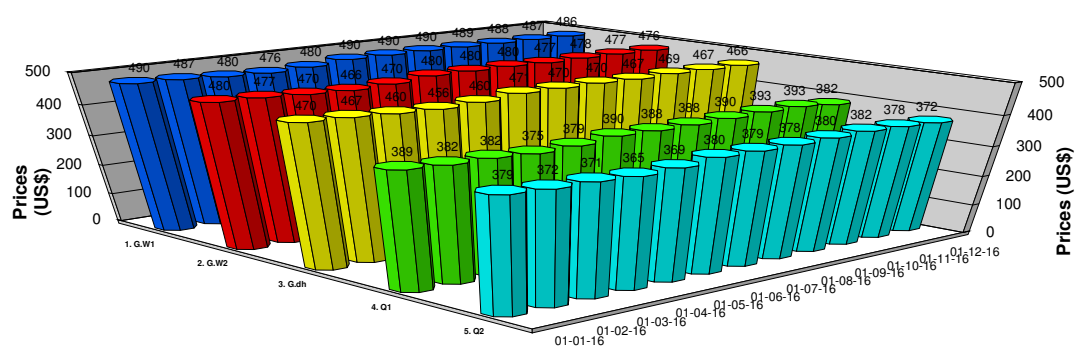


DATA STATISTICALLY VALIDATED

Visit [www.somalilandchamber.com](http://www.somalilandchamber.com) for more details

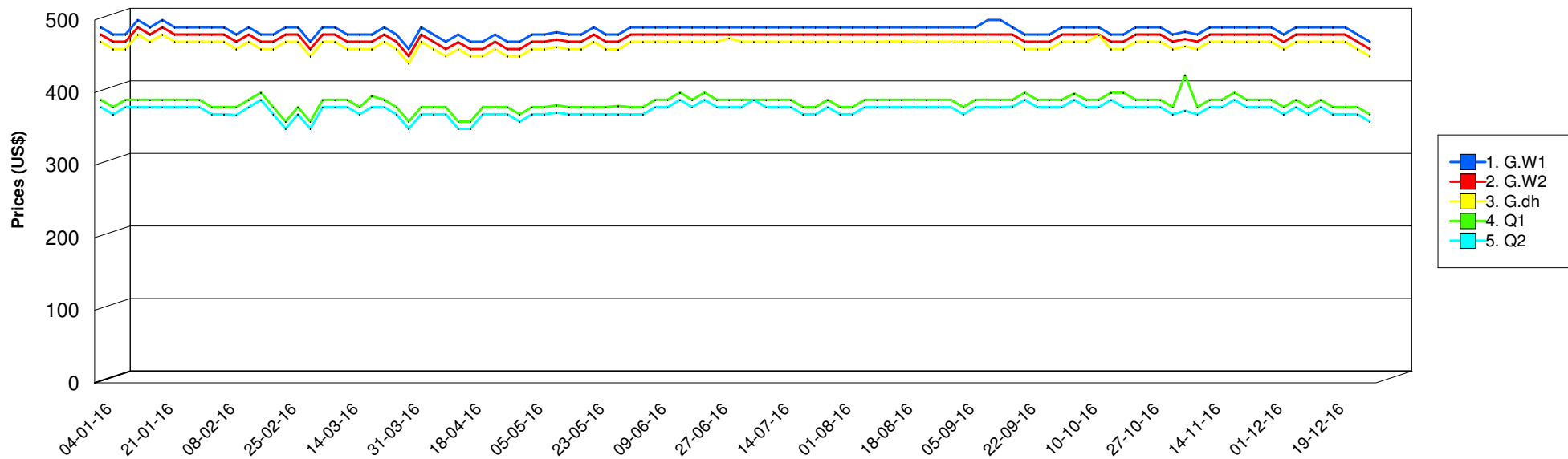


### Burao - Camel Export Quality Prices in USD

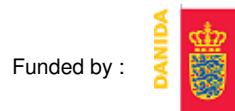


Code	Description	Yearly Average Price	Yearly Minimum Price	Yearly Maximum Price
1. G.W1	Camel Mature GR1	486.03	460.00	500.00
2. G.W2	Camel Mature GR2	475.83	450.00	490.00
3. G.dh	Camel Intermediate	465.97	440.00	480.00
4. Q1	Camel Immature GR1	385.88	360.00	423.90
5. Q2	Camel Immature GR2	375.45	350.00	390.00

Note: Prices represent the monthly average prices from the respective market



\* Please refer to the data explanatory key in the first page



Implemented by:

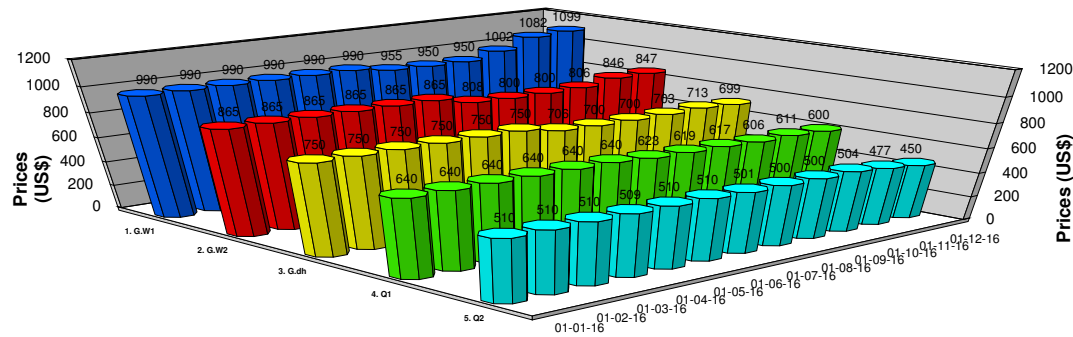


DATA STATISTICALLY VALIDATED

Visit [www.somalilandchamber.com](http://www.somalilandchamber.com) for more details

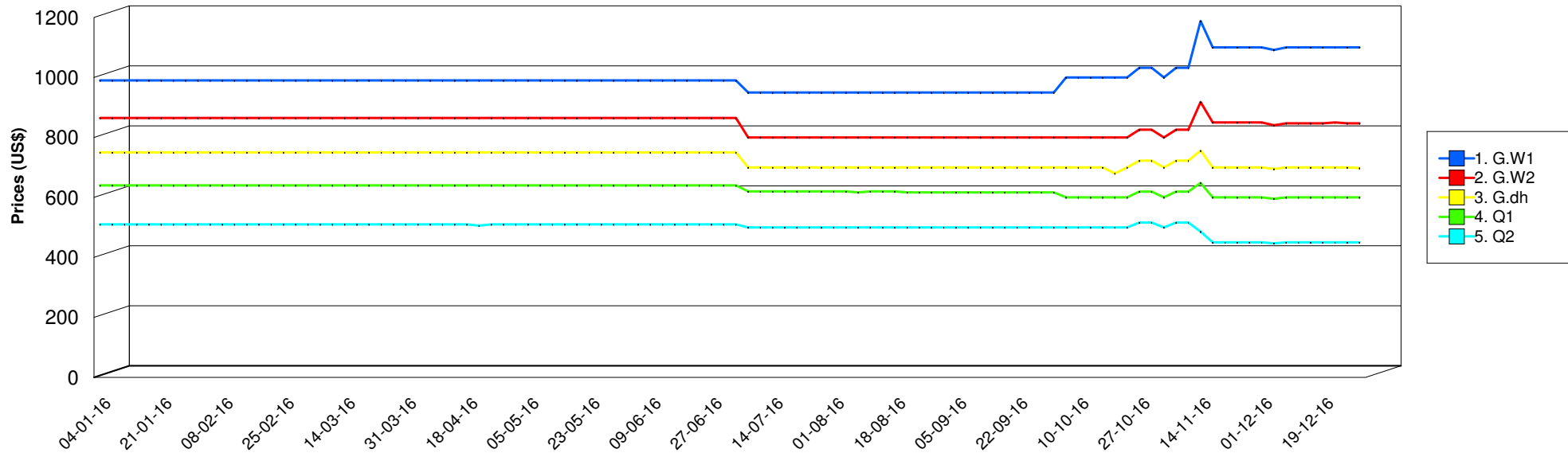


**Tog Wajaale - Camel Export Quality Prices in USD**



Code	Description	Yearly Average Price	Yearly Minimum Price	Yearly Maximum Price
1. G.W1	Camel Mature GR1	997.86	950.00	1,188.00
2. G.W2	Camel Mature GR2	841.23	800.00	918.00
3. G.dh	Camel Intermediate	726.62	680.00	756.00
4. Q1	Camel Immature GR1	626.09	595.56	648.00
5. Q2	Camel Immature GR2	499.25	446.67	516.00

Note: Prices represent the monthly average prices from the respective market



\* Please refer to the data explanatory key in the first page



Implemented by:

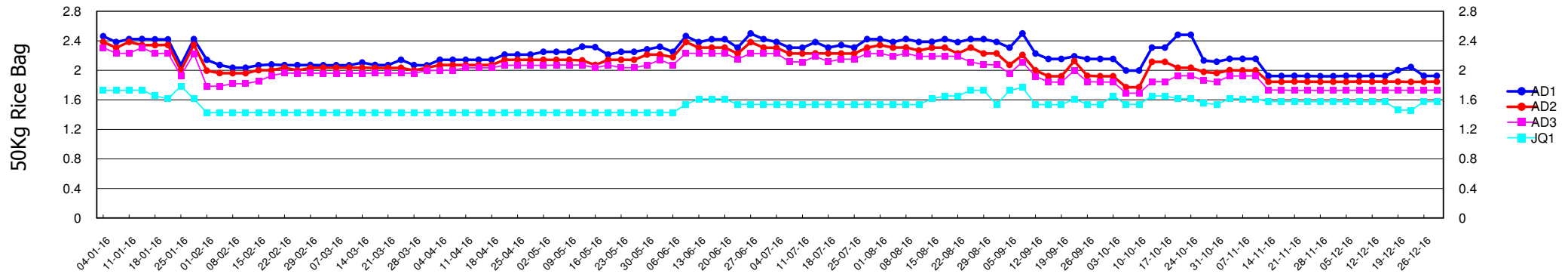


DATA STATISTICALLY VALIDATED

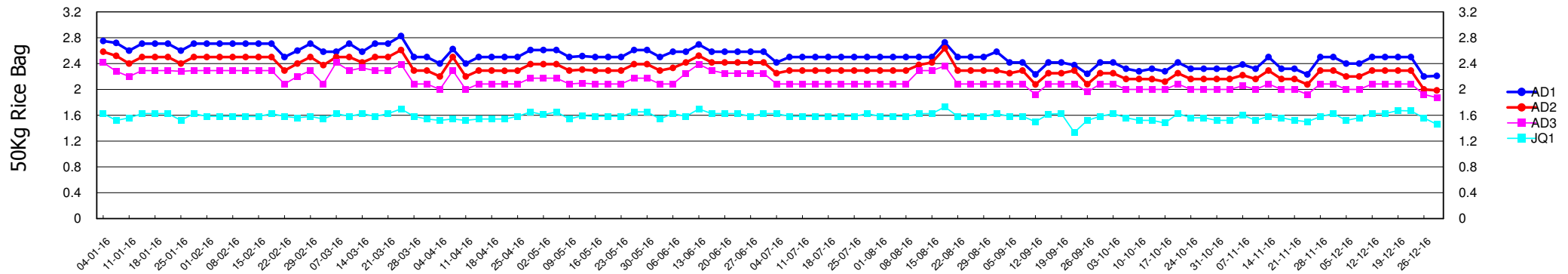
Visit [www.somalilandchamber.com](http://www.somalilandchamber.com) for more details



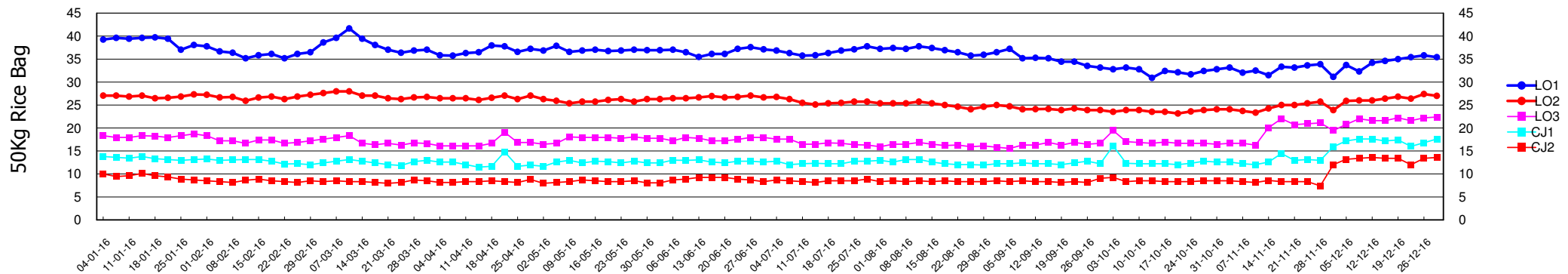
#### Terms of Trade : Number of 50Kg Rice Bags bought from sale of one export quality small ruminant in Hargeisa



#### Terms of Trade : Number of 50Kg Rice Bags bought from sale of one export quality small ruminant in Burao



#### Terms of Trade : Number of 50Kg Rice Bags bought from sale of one export quality cattle in Tog Wajaale



\* Please refer to the data explanatory key in the first page



Implemented by:

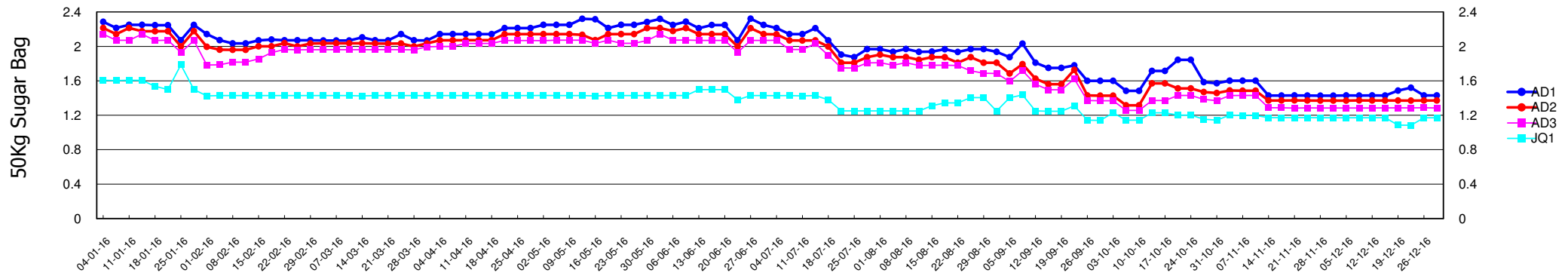


DATA STATISTICALLY VALIDATED

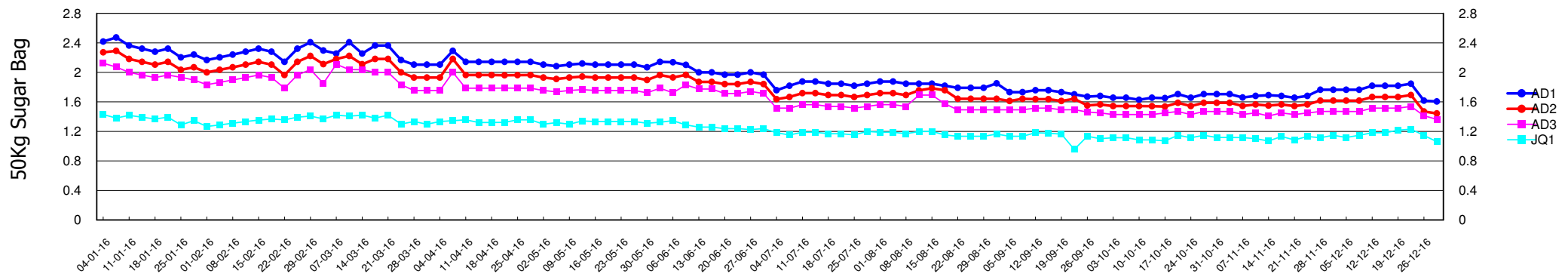
Visit [www.somalilandchamber.com](http://www.somalilandchamber.com) for more details



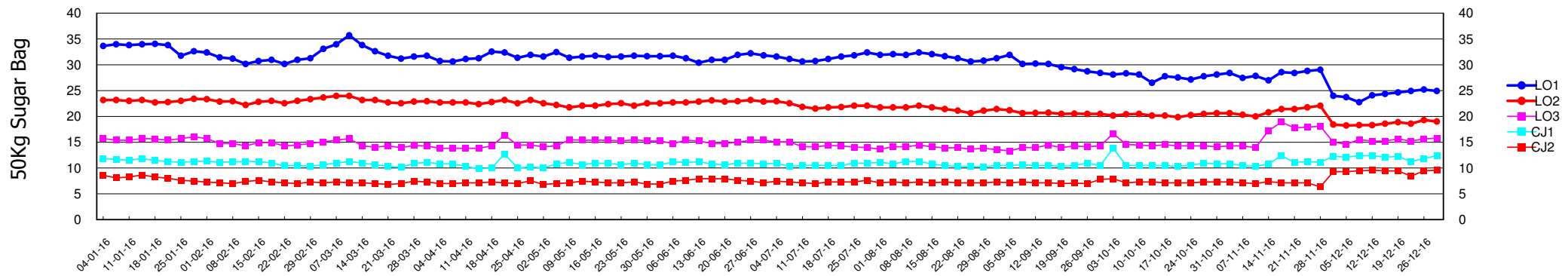
**Terms of Trade : Number of 50Kg Sugar Bags bought from sale of one export quality small ruminant in Hargeisa**



**Terms of Trade : Number of 50Kg Sugar Bags bought from sale of one export quality small ruminant in Burao**



**Terms of Trade : Number of 50Kg Sugar Bags bought from sale of one export quality cattle in Tog Wajaale**



\* Please refer to the data explanatory key in the first page



Funded by :

Implemented by:

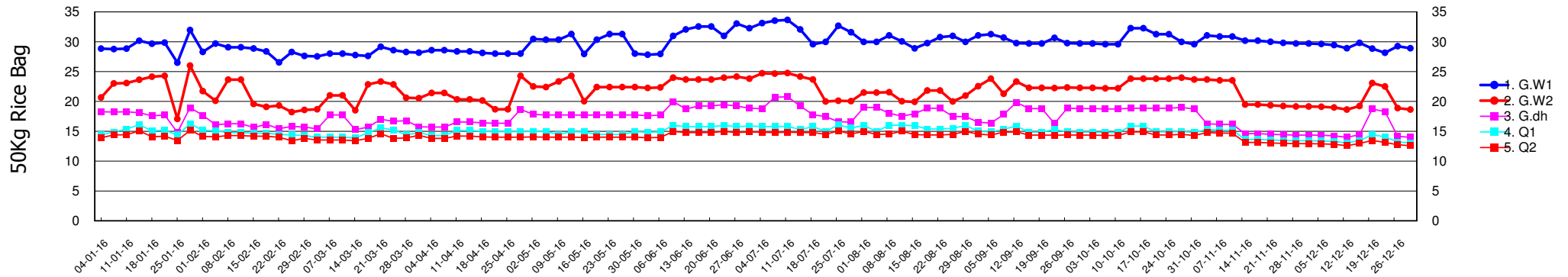


DATA STATISTICALLY VALIDATED

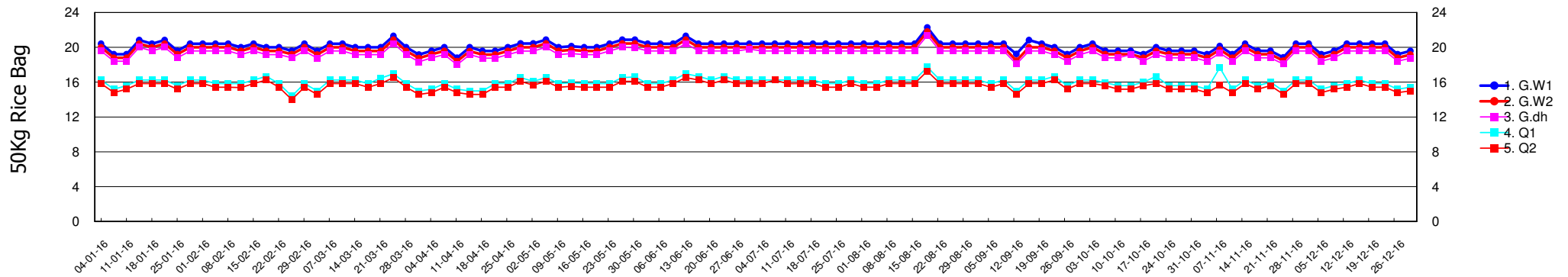
Visit [www.somalilandchamber.com](http://www.somalilandchamber.com) for more details



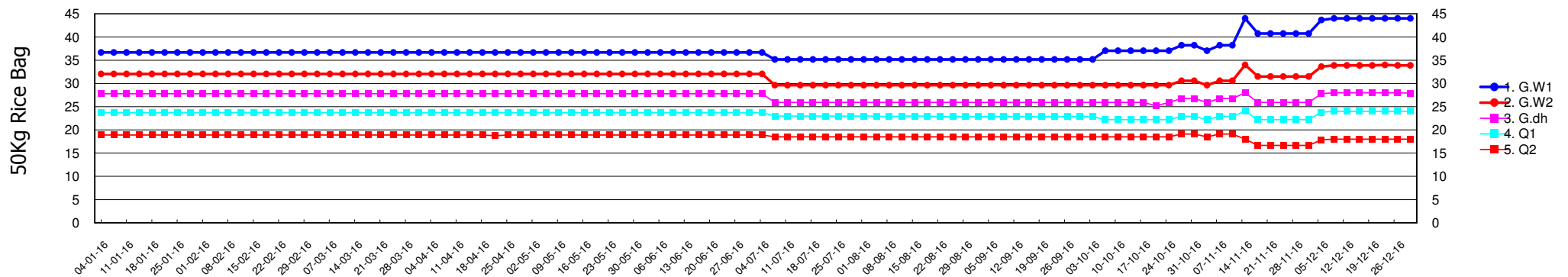
#### Terms of Trade : Number of 50Kg Rice Bags bought from sale of one export quality camel in Hargeisa



#### Terms of Trade : Number of 50Kg Rice Bags bought from sale of one export quality camel in Burao



#### Terms of Trade : Number of 50Kg Rice Bags bought from sale of one export quality camel in Tog Wajaale



\* Please refer to the data explanatory key in the first page

Funded by :



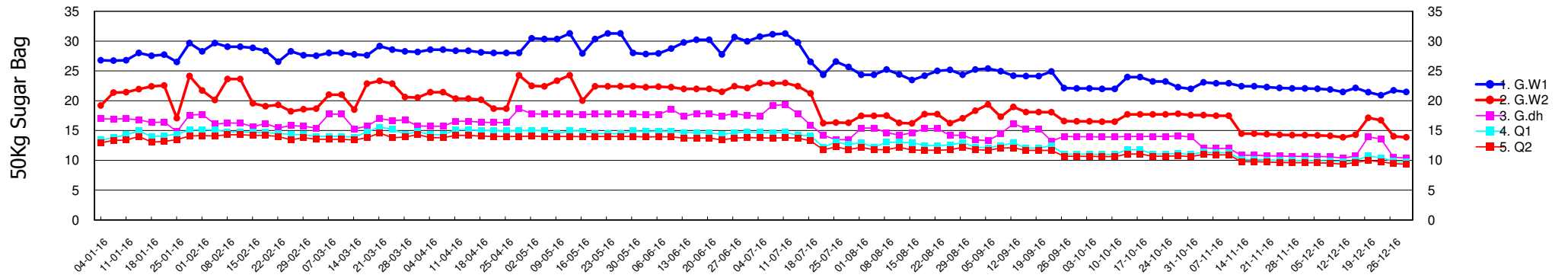
Implemented by:



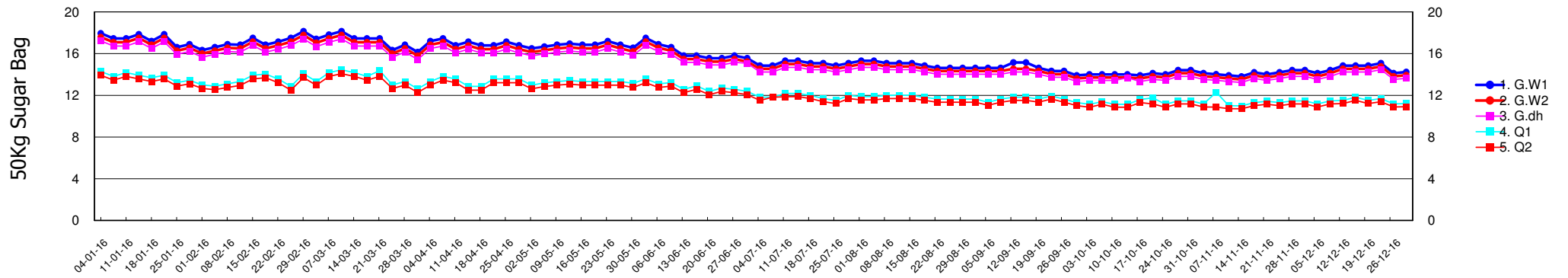
DATA STATISTICALLY VALIDATED

Visit [www.somalilandchamber.com](http://www.somalilandchamber.com) for more details

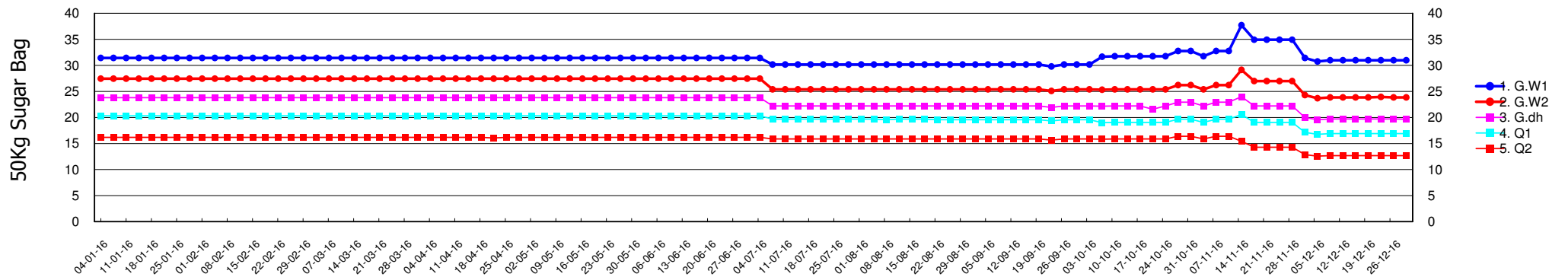
**Terms of Trade : Number of 50Kg Sugar Bags bought from sale of one export quality camel in Hargeisa**



**Terms of Trade : Number of 50Kg Sugar Bags bought from sale of one export quality camel in Burao**



**Terms of Trade : Number of 50Kg Sugar Bags bought from sale of one export quality camel in Tog Wajaale**

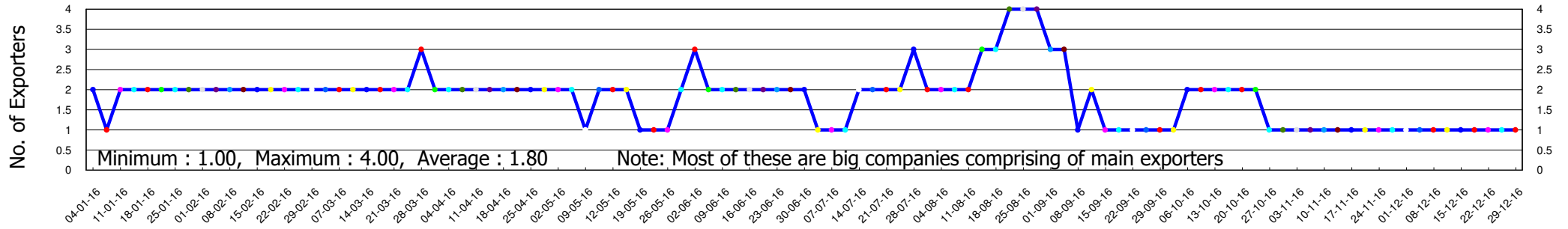


\* Please refer to the data explanatory key in the first page

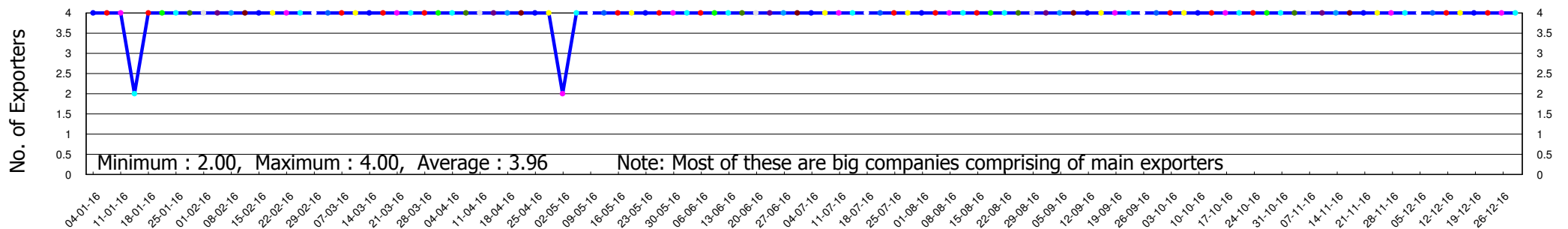
DATA STATISTICALLY VALIDATED  
 Visit [www.somalilandchamber.com](http://www.somalilandchamber.com) for more details



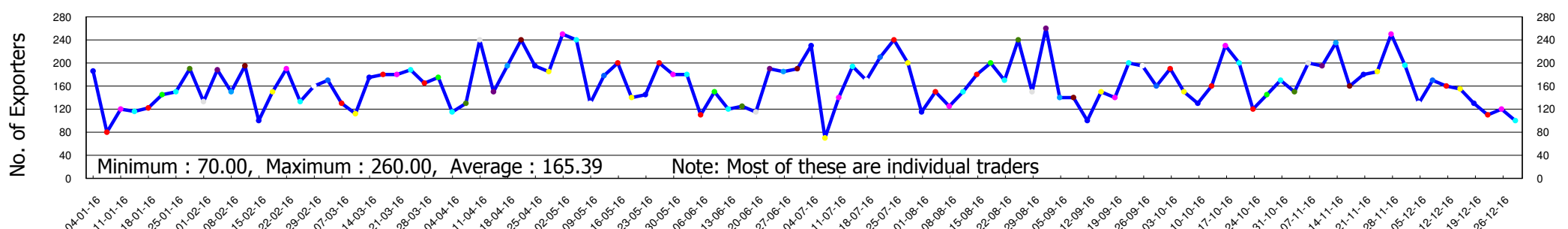
#### Hargeisa - Number of Exporters Present in the Market



#### Burao - Number of Exporters Present in the Market



#### Tog Wajaale - Number of Exporters Present in the Market



\* Please refer to the data explanatory key in the first page

Funded by :



Implemented by:

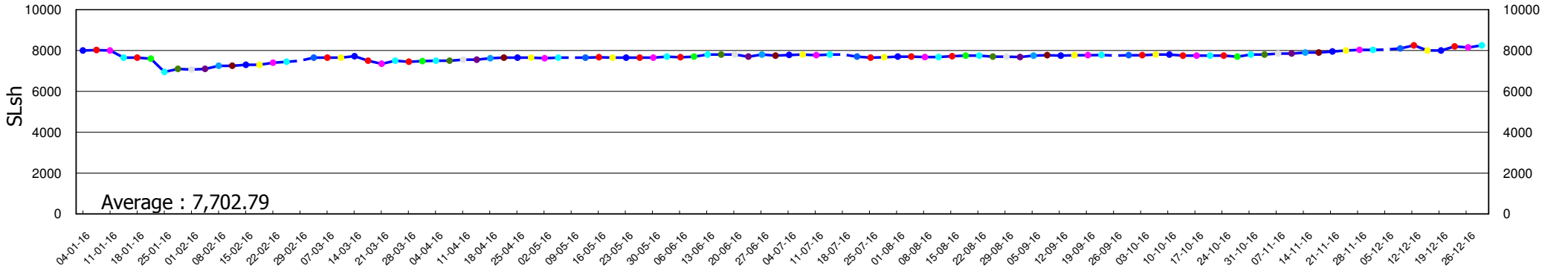


DATA STATISTICALLY VALIDATED

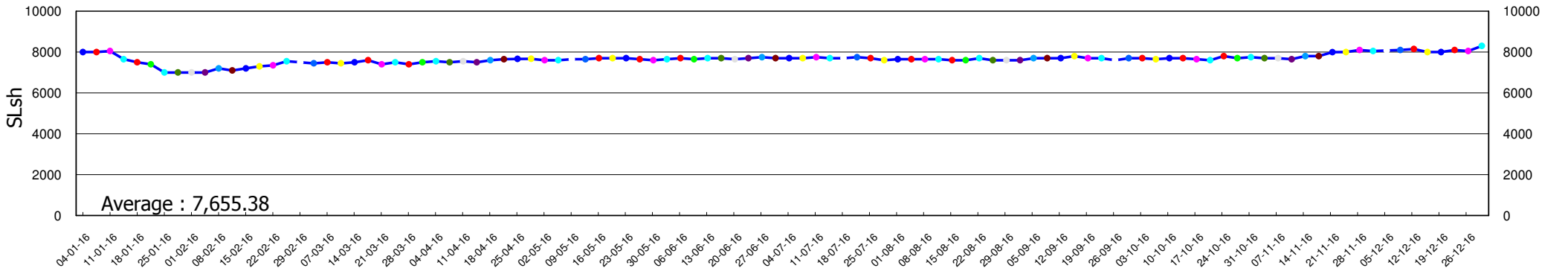
Visit [www.somalilandchamber.com](http://www.somalilandchamber.com) for more details



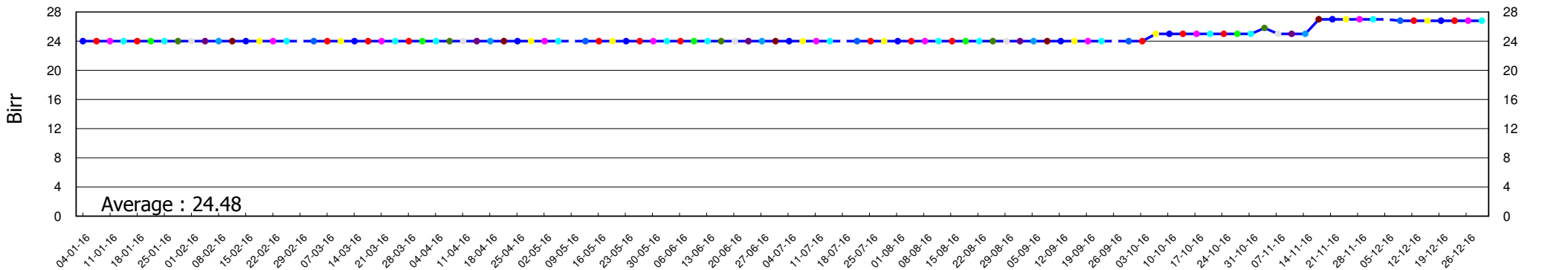
#### Hargeisa - Currency Exchange Rates for 1US\$ to SLsh



#### Burao - Currency Exchange Rates for 1US\$ to SLsh



#### Tog Wajaale - Currency Exchange Rates for 1US\$ to Birr



\* Please refer to the data explanatory key in the first page

Funded by :



Implemented by:

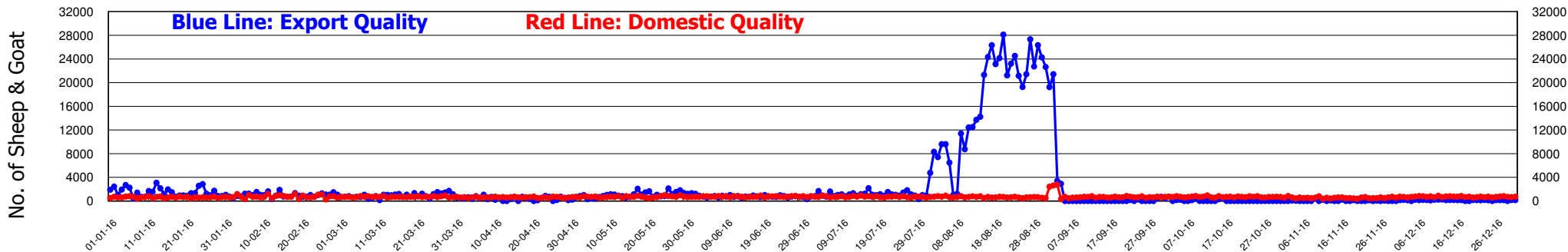


DATA STATISTICALLY VALIDATED

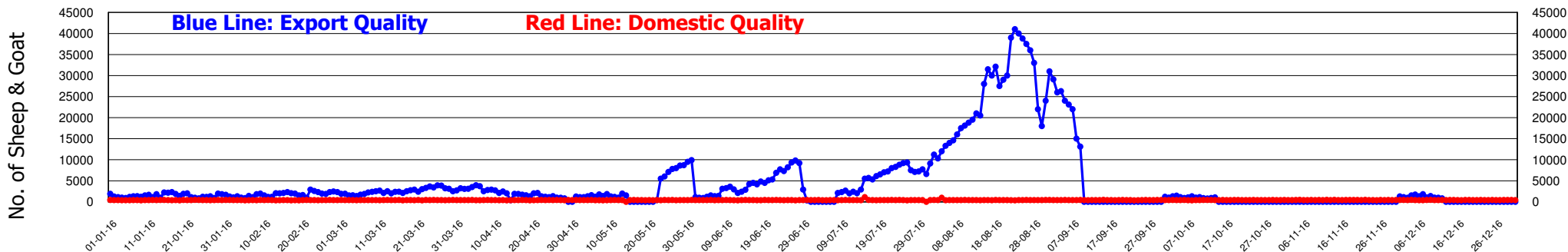
Visit [www.somalilandchamber.com](http://www.somalilandchamber.com) for more details



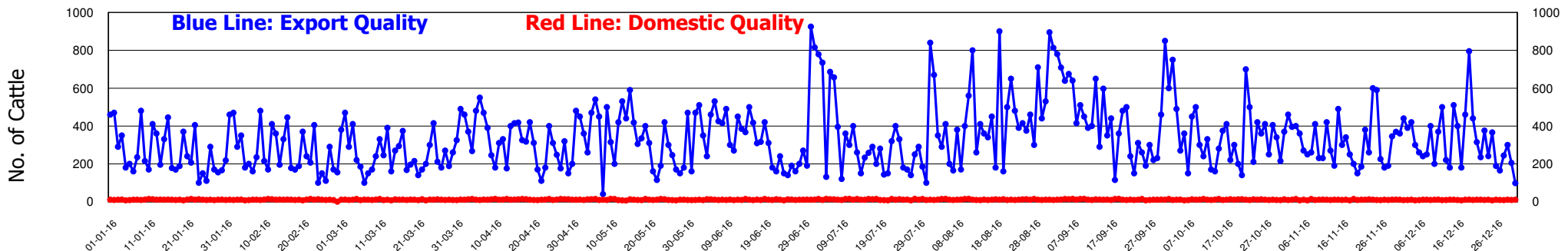
### Hargeisa - Number of Sheep & Goats Marketed (Export & Domestic Quality) in the period



### Burao - Number of Sheep & Goats Marketed (Export & Domestic Quality) in the period



### Tog Wajaale - Number of Cattle Marketed (Export & Domestic Quality) in the period



\* Please refer to the data explanatory key in the first page

Funded by :



Implemented by :

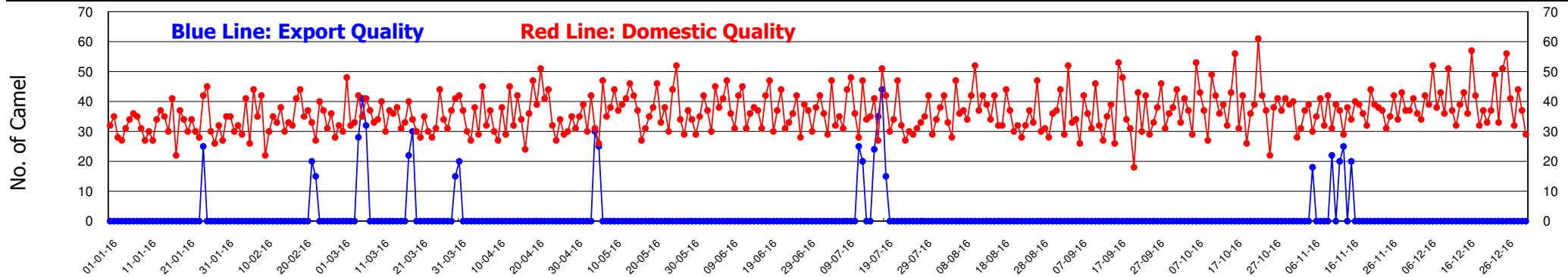


DATA STATISTICALLY VALIDATED

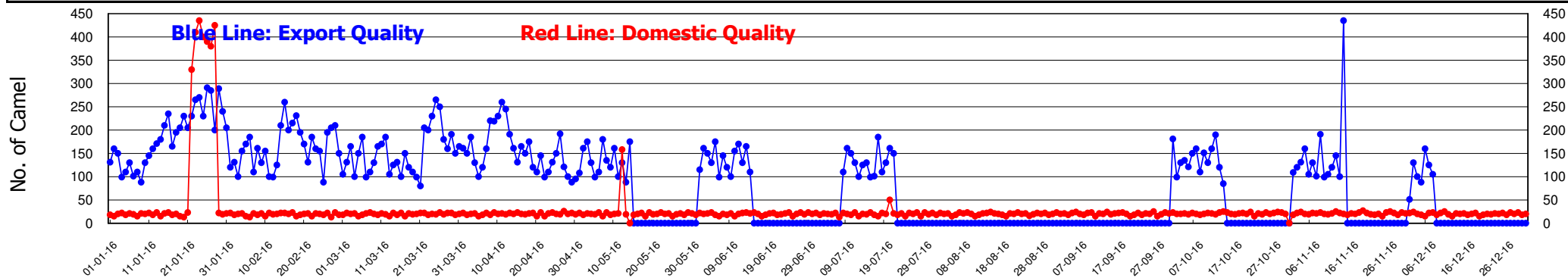
Visit [www.somalilandchamber.com](http://www.somalilandchamber.com) for more details



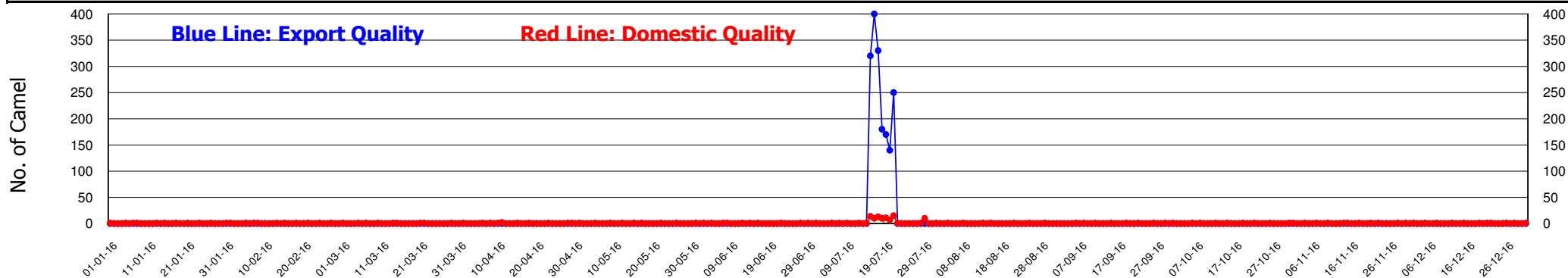
#### Hargeisa - Number of Camels Marketed (Export & Domestic Quality) in the period



#### Burao - Number of Camels Marketed (Export & Domestic Quality) in the period



#### Tog Wajaale - Number of Camels Marketed (Export & Domestic Quality) in the period



\* Please refer to the data explanatory key in the first page

Funded by :



Implemented by:



DATA STATISTICALLY VALIDATED

Visit [www.somalilandchamber.com](http://www.somalilandchamber.com) for more details



**Hargeisa - Total Number of Animals Marketed (Export & Domestic Quality)** Blue Values: Export Quality Red Values: Domestic Quality

	Jan-16	Feb-16	Mar-16	Apr-16	May-16	Jun-16	Jul-16	Aug-16	Sep-16	Oct-16	Nov-16	Dec-16	Total
<b>No. of Camels</b>	25	35	188	0	55	0	163	0	0	0	105	0	571
	1,002	988	1,095	1,052	1,146	1,118	1,122	1,126	1,081	1,211	1,090	1,246	13,277
<b>No. of Sheep &amp; Goats</b>	46,466	29,013	28,106	12,334	32,336	22,727	33,994	522,630	48,509	2,772	1,461	3,946	784,294
	19,391	21,787	21,841	18,421	22,030	22,087	22,410	20,204	24,808	21,629	16,227	21,937	252,772

**Burao - Total Number of Animals Marketed (Export & Domestic Quality)** Blue Values: Export Quality Red Values: Domestic Quality

	Jan-16	Feb-16	Mar-16	Apr-16	May-16	Jun-16	Jul-16	Aug-16	Sep-16	Oct-16	Nov-16	Dec-16	Total
<b>No. of Camels</b>	5,815	4,701	4,711	4,614	1,872	1,925	1,842	0	0	1,922	2,051	759	30,212
	3,232	556	613	607	733	599	639	617	613	629	631	622	10,091
<b>No. of Sheep &amp; Goats</b>	44,800	50,710	78,090	58,445	90,830	122,850	139,400	753,300	209,600	14,970	0	14,820	1,577,815
	12,445	11,355	12,370	11,915	11,955	11,920	12,695	12,985	12,135	12,630	12,525	12,791	147,721

**Tog Wajaale - Total Number of Animals Marketed (Export & Domestic Quality)** Blue Values: Export Quality Red Values: Domestic Quality

	Jan-16	Feb-16	Mar-16	Apr-16	May-16	Jun-16	Jul-16	Aug-16	Sep-16	Oct-16	Nov-16	Dec-16	Total
<b>No. of Camels</b>	0	0	0	0	0	0	1,790	0	0	0	0	0	1,790
	11	10	9	11	9	10	98	8	8	9	11	11	205
<b>No. of Cattle</b>	8,065	7,681	7,915	9,587	10,374	9,814	10,632	13,545	13,458	11,355	9,569	10,049	122,044
	315	285	312	341	317	306	354	336	333	326	300	287	3,812



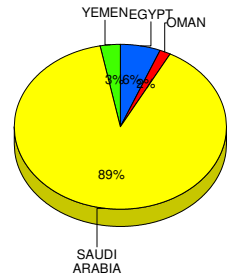
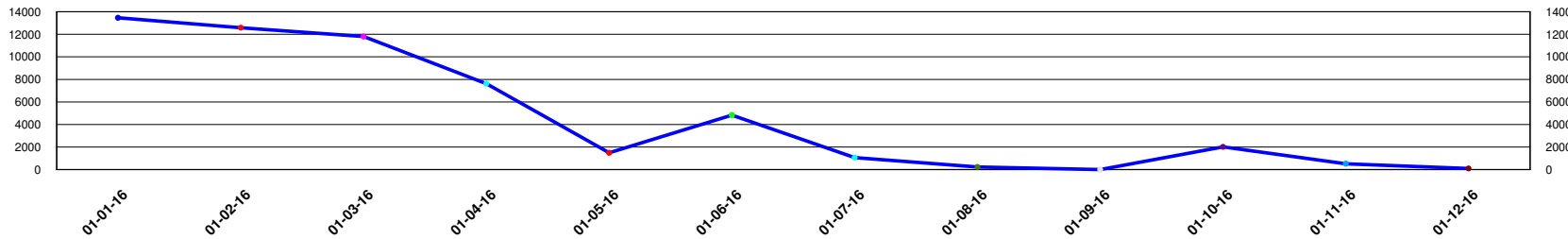


**Total number of heads exported from Berbera port (Source: Berbera Port Authority)**

	Jan-16	Feb-16	Mar-16	Apr-16	May-16	Jun-16	Jul-16	Aug-16	Sep-16	Oct-16	Nov-16	Dec-16	Total
Camels	13,459	12,579	11,797	7,619	1,490	4,839	1,066	235	0	2,018	521	100	55,723
Cattle	15,961	13,868	8,717	8,522	6,677	17,085	13,186	22,681	14,808	9,818	8,864	11,101	151,288
Sheep & Goats	158,261	114,220	164,172	115,543	59,016	281,408	144,630	1,208,759	379,722	98,183	47,188	35,510	2,806,612
<b>Total</b>	<b>187,681</b>	<b>140,667</b>	<b>184,686</b>	<b>131,684</b>	<b>67,183</b>	<b>303,332</b>	<b>158,882</b>	<b>1,231,675</b>	<b>394,530</b>	<b>110,019</b>	<b>56,573</b>	<b>46,711</b>	<b>3,013,623</b>

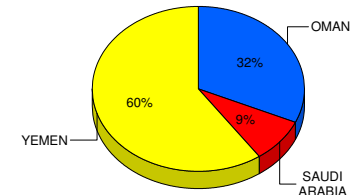
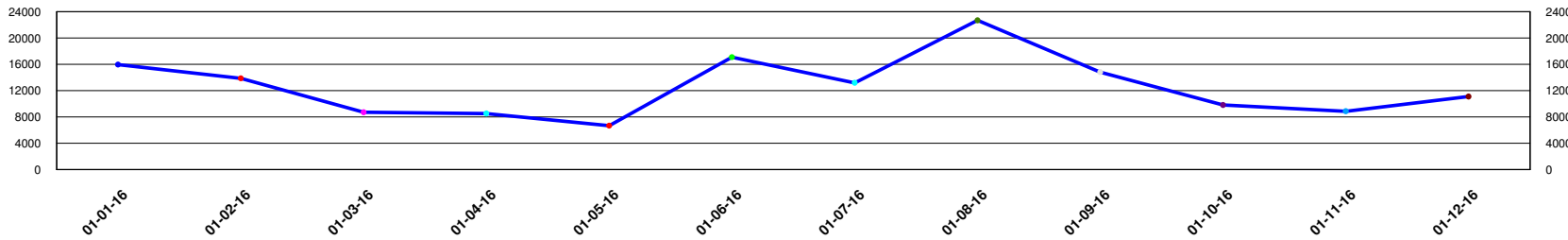
**Number of Camels exported and percentage according to country of destination**

**1.85%**



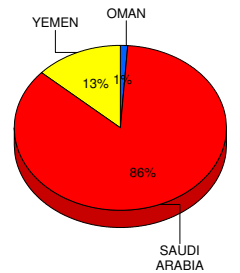
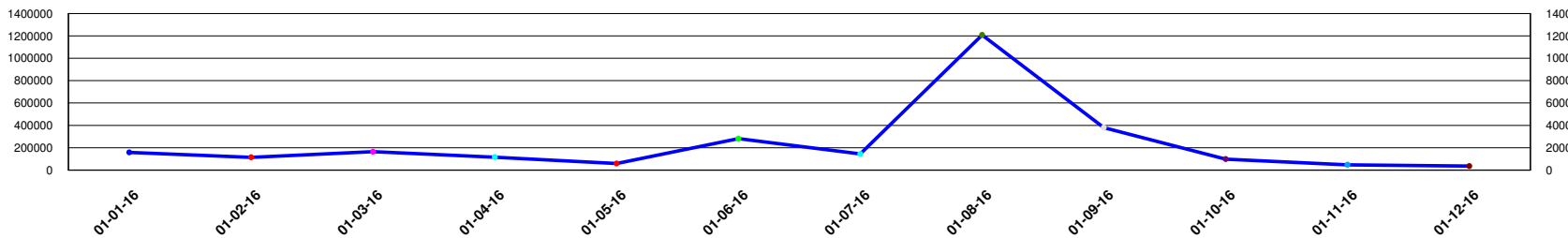
**Number of Cattle exported and percentage according to country of destination**

**5.02%**



**Number of Sheep & Goats exported and percentage according to country of destination**

**93.13%**



\* Please refer to the data explanatory key in the first page

DATA STATISTICALLY VALIDATED

Visit [www.somalilandchamber.com](http://www.somalilandchamber.com) for more details



**Livestock exported to EGYPT from Berbera port according to vessel capacity & destinations (Source: Berbera Port Authority)**

Vessel Name	Ship Capacity (In Tons)	Trips Made	Total Shoats	Total Cattle	Total Camels	Total Heads
M/V AMAL	1,415	1	0	0	800	800
M/V LILY J	6,415	1	0	0	2,603	2,603
<b>Sub Total :</b>			<b>0</b>	<b>0</b>	<b>3,403</b>	<b>3,403</b>

**Livestock exported to OMAN from Berbera port according to vessel capacity & destinations (Source: Berbera Port Authority)**

Vessel Name	Ship Capacity (In Tons)	Trips Made	Total Shoats	Total Cattle	Total Camels	Total Heads
S/K MUHAYADIIN	810	1	0	498	0	498
S/K IDIL	777	1	0	464	0	464
S/K AL HAMSA	619	3	0	1,499	0	1,499
S/K MULA OMER	775	2	0	999	0	999
S/K IBRAAHIM	700	1	0	517	0	517
S/K KOSHAH	706	1	0	506	0	506
S/K HUBMAT	870	1	0	490	0	490
S/K AL DAHABO	2,000	1	0	494	0	494
S/K HIJRAT	800	2	0	1,003	0	1,003
S/K NASIR	550	1	0	494	0	494
S/K HASHIMI	650	3	0	1,535	0	1,535
S/K AL HASSAN	850	2	0	1,043	0	1,043
S/K ZILANE	550	1	0	496	0	496
S/K N-HASHIM	800	1	0	500	0	500
S/K NOOR AL IIMAN	810	1	0	500	0	500
S/K HUSNI	1,010	1	0	500	0	500
S/K KESHALI	800	1	0	480	0	480
S/K KRUSHNA LILA	800	1	0	491	0	491
S/K M.SULDAAN	880	1	0	491	0	491
S/K AHMED -1	750	3	0	1,473	0	1,473

\* Please refer to the data explanatory key in the first page

Funded by :



Implemented by:



DATA STATISTICALLY VALIDATED

Visit [www.somalilandchamber.com](http://www.somalilandchamber.com) for more details

**Livestock exported to OMAN from Berbera port according to vessel capacity & destinations (Source: Berbera Port Authority)**

Vessel Name	Ship Capacity (In Tons)	Trips Made	Total Shoats	Total Cattle	Total Camels	Total Heads
S/K KHISNA	700	1	0	496	0	496
S/K KHARSHALI	744	1	0	500	0	500
S/K AL AMIIR 2	875	1	0	498	0	498
S/K IID MOHAMOUD	658	1	0	498	0	498
S/K AL YASIIN	450	3	0	1,576	0	1,576
S/K MOWLIID	945	1	0	520	0	520
S/K GOUSH AL MADINA	779	1	0	506	0	506
S/K JUNEIS	800	2	0	992	0	992
S/K MINIIR	690	4	0	2,114	0	2,114
S/K AL DAHAB	2,100	3	0	1,516	0	1,516
S/K IMARRAT	890	1	4,520	0	0	4,520
S/K NOORI	950	2	0	973	0	973
S/K MANSCHA ALAH	540	1	0	490	0	490
S/K TOWFIQ 1	777	1	0	486	0	486
S/K NOOR AMIIN	900	1	0	505	0	505
S/K SHARIIF	450	1	4,512	0	0	4,512
S/K SIRAAJI	621	2	0	1,102	0	1,102
S/K DAYIBO	610	1	0	515	0	515
S/K SITII	710	1	0	483	0	483
S/K SULDAN	775	1	0	487	0	487
S/K SHAMAC	787	1	0	485	0	485
S/K CHASTI	775	2	0	994	0	994
S/K SHAMA	699	1	0	500	0	500
S/K BURHAN NOOR	754	1	0	497	0	497
S/K WALIID	820	4	4,315	1,665	0	5,980
M/V AHMED N	4,592	1	0	1,944	0	1,944
S/K WARKADHISH	720	1	0	582	0	582
S/K YAKUUB	745	1	0	499	0	499
S/K YASEEN 1	770	2	0	996	0	996
S/K AL NOUR	775	1	0	495	0	495
S/K FATTAH	800	1	0	484	0	484

**Livestock exported to OMAN from Berbera port according to vessel capacity & destinations (Source: Berbera Port Authority)**

Vessel Name	Ship Capacity (In Tons)	Trips Made	Total Shoats	Total Cattle	Total Camels	Total Heads
M/V NOBA 2	1,046	1	2,794	1,249	0	4,043
S/K NOORI ISMAILI	540	1	0	500	0	500
S/K NOORI ZAMUDINI	800	2	0	992	0	992
S/K GOSE AAZAM	720	1	0	538	0	538
M/V BARAKO 5	15,575	1	0	298	0	298
S/K AL MUKHTARI	850	1	0	574	0	574
M/V BARAKO 3	4,182	2	12,440	2,012	860	15,312
S/K NOOR MOHBOUB 1	665	1	0	504	0	504
S/K AL HAYDRO	799	1	0	483	0	483
M/V BARAKAAT	2,547	1	5,460	0	0	5,460
S/K SALUHUDIIN	700	1	0	500	0	500
S/K SAPIR	840	2	0	1,037	0	1,037
S/K FAISA	700	1	0	499	0	499
S/K SHAHI SABIR	400	1	0	493	0	493
S/K AL HAYAT	750	1	0	500	0	500
<b>Sub Total :</b>			<b>34,041</b>	<b>48,050</b>	<b>860</b>	<b>82,951</b>

**Livestock exported to SAUDI ARABIA from Berbera port according to vessel capacity & destinations (Source: Berbera Port Authority)**

Vessel Name	Ship Capacity (In Tons)	Trips Made	Total Shoats	Total Cattle	Total Camels	Total Heads
M/V ABU YASSER	2,811	4	44,362	0	1,858	46,220
M/V BARAKO 8	1,378	1	16,100	0	0	16,100
M/V AHMED N	4,592	12	172,783	0	11,171	183,954
M/V AL IIMAN	3,556	6	153,355	0	2,176	155,531
M/V ALPHA	2,306	1	27,000	0	0	27,000
M/V APUS	4,481	1	35,837	0	0	35,837
M/V ASADADIIN	1,034	1	0	1,120	0	1,120
S/K SAFA	680	1	932	774	0	1,706
M/V BARAKO 1	4,605	11	337,545	500	6,896	344,941
M/V BARAKO 3	4,182	11	225,685	0	4,502	230,187

\* Please refer to the data explanatory key in the first page

DATA STATISTICALLY VALIDATED  
Visit [www.somalilandchamber.com](http://www.somalilandchamber.com) for more details

**Livestock exported to SAUDI ARABIA from Berbera port according to vessel capacity & destinations (Source: Berbera Port Authority)**

Vessel Name	Ship Capacity (In Tons)	Trips Made	Total Shoats	Total Cattle	Total Camels	Total Heads
M/V BARAKO 5	15,575	3	132,660	0	685	133,345
M/V TRUST 1	2,973	12	181,563	3,133	4,813	189,509
M/V FAHED	2,511	17	228,092	2,882	7,928	238,902
M/V FARAH 1	1,679	3	58,988	760	521	60,269
M/V HAJI GULUF	4,218	2	69,000	0	0	69,000
M/V HAJI HASSAN	2,998	3	70,285	0	304	70,589
M/V MALAK 1	2,332	4	52,514	0	1,785	54,299
M/V TAIBA	4,033	2	73,306	707	0	74,013
M/V KARAZI	4,321	1	27,000	0	0	27,000
M/V NOBA 1	926	1	992	1,044	0	2,036
M/V TRANSPORTER	8,070	2	95,794	266	0	96,060
M/V MOHAMOUD N	3,495	5	110,605	0	1,793	112,398
M/V MAKKAH 1	3,432	1	14,967	360	0	15,327
M/V MAHAD	2,821	1	23,300	0	0	23,300
M/V LILY J	6,415	7	249,285	1,500	5,335	256,120
<b>Sub Total :</b>			<b>2,401,950</b>	<b>13,046</b>	<b>49,767</b>	<b>2,464,763</b>

**Livestock exported to YEMEN from Berbera port according to vessel capacity & destinations (Source: Berbera Port Authority)**

Vessel Name	Ship Capacity (In Tons)	Trips Made	Total Shoats	Total Cattle	Total Camels	Total Heads
S/K AL SAFAH	809	1	1,390	658	0	2,048
S/K AL MAYAN	550	1	980	0	0	980
S/K AL SAHARA	700	1	30	0	0	30
S/K AL MUKHTARI	850	1	1,270	398	0	1,668
S/K AL SAFA	550	1	926	687	0	1,613
S/K AL SALAMA	650	2	1,619	380	0	1,999
S/K AL ASIIDI	400	1	400	100	0	500
S/K AL SHAMA	598	1	1,000	0	0	1,000
S/K AL WAHIIBI	710	1	1,100	0	0	1,100
S/K AL MUNIR	670	1	594	459	0	1,053

\* Please refer to the data explanatory key in the first page

Funded by :



Implemented by:



DATA STATISTICALLY VALIDATED

Visit [www.somalilandchamber.com](http://www.somalilandchamber.com) for more details

**Livestock exported to YEMEN from Berbera port according to vessel capacity & destinations (Source: Berbera Port Authority)**

Vessel Name	Ship Capacity (In Tons)	Trips Made	Total Shoats	Total Cattle	Total Camels	Total Heads
M/V TRANSPORTER	8,070	1	35,684	0	0	35,684
M/V APUS	4,481	1	37,000	0	0	37,000
M/V NOBA 1	926	22	57,875	23,384	0	81,259
S/K AL HASSAN	850	3	3,476	1,661	0	5,137
S/K AL MUBARIK	570	1	195	550	0	745
S/K AL MADAR	450	1	390	0	0	390
S/K AL DAHAB	2,100	5	2,445	1,974	100	4,519
S/K AL HAYAT	750	1	0	633	0	633
M/V NOBA 2	1,046	16	47,353	17,564	0	64,917
S/K AL FARDOOS	550	2	1,200	131	0	1,331
M/V FARAH 1	1,679	1	14,540	0	458	14,998
S/K AL HAROON	1,850	1	4,474	0	0	4,474
S/K AL HAMSA	619	1	0	531	0	531
M/V HAJI GULUF	4,218	1	36,000	0	0	36,000
S/K AL MUKHTAAR	1,000	1	1,065	0	277	1,342
S/K MUHAYADIIN	810	1	600	155	0	755
S/K NASRUL ISLAM	620	2	3,093	296	0	3,389
S/K NARULDIIN	650	5	819	943	0	1,762
S/K MUTAWAKAL	500	5	3,283	381	0	3,664
S/K MUMTAZ	850	1	2,068	206	0	2,274
S/K MU'MIN	783	1	1,050	610	0	1,660
S/K HAJI MAKKAH	750	1	0	618	0	618
S/K MUKKAH	540	1	240	350	0	590
S/K NOURADIIN	550	1	0	144	0	144
S/K MUBARIK	820	9	7,621	3,035	0	10,656
S/K MOHAMMED	790	1	250	173	0	423
S/K MOHAMED	777	2	0	1,163	0	1,163
S/K MINIIR	690	5	1,089	1,557	0	2,646
S/K MARWO	688	1	1,344	76	0	1,420
S/K MARWAN 1	690	1	0	718	0	718
S/K MU'LA ALI	690	1	5,226	0	0	5,226

**Livestock exported to YEMEN from Berbera port according to vessel capacity & destinations (Source: Berbera Port Authority)**

Vessel Name	Ship Capacity (In Tons)	Trips Made	Total Shoats	Total Cattle	Total Camels	Total Heads
S/K SAFA	680	9	12,727	3,900	0	16,627
S/K WALIID	820	5	809	1,083	0	1,892
S/K WAHIIBA	710	2	0	784	0	784
S/K TAWAKAL	665	5	2,883	432	0	3,315
S/K SUUF	750	1	0	736	0	736
S/K SULDAN	775	1	0	524	0	524
S/K SIRAAJI	621	4	4,782	1,444	0	6,226
S/K NASRULLAH	550	9	4,530	2,682	0	7,212
S/K SAPIR	840	1	4,247	0	0	4,247
S/K NASRULLAH 2	920	1	1,077	1,299	0	2,376
S/K SAEEDA	550	2	1,000	140	0	1,140
S/K SACAD	710	1	0	151	0	151
S/K SABRA	550	1	0	165	0	165
S/K RIYAD	775	5	3,114	900	0	4,014
S/K QASIM	720	1	0	527	0	527
S/K MALAK	450	1	55	242	0	297
S/K SHAMISO	990	1	1,000	0	150	1,150
S/K DAHA	450	2	4,626	0	0	4,626
S/K MARWAH	850	7	5,105	2,288	0	7,393
S/K FATHUL KHAIR	666	6	2,873	568	0	3,441
S/K FATHUL	550	2	3,177	311	0	3,488
S/K FARDUUS	550	3	1,147	282	0	1,429
S/K FAJAR 1	550	7	3,320	920	0	4,240
S/K FAHAD 2	1,420	1	646	0	255	901
S/K FATTUH ALLAH	450	1	0	150	0	150
S/K DAYIBO	610	1	452	292	0	744
S/K GASHI MADINA	650	1	0	750	0	750
S/K BUSHRA	770	1	1,683	188	0	1,871
S/K BIRAW BIRA	910	1	1,571	0	157	1,728
S/K BARI	450	2	1,881	0	0	1,881
S/K ASHRA	560	1	1,713	0	0	1,713

**Livestock exported to YEMEN from Berbera port according to vessel capacity & destinations (Source: Berbera Port Authority)**

Vessel Name	Ship Capacity (In Tons)	Trips Made	Total Shoats	Total Cattle	Total Camels	Total Heads
S/K ASHAR	650	1	2,050	0	0	2,050
S/K AMIR ALI	880	1	0	474	0	474
S/K FADHUL KHAYR	550	4	5,866	0	0	5,866
S/K IMAN	650	1	1,540	0	0	1,540
S/K AL YASIIN	450	1	4,930	0	0	4,930
S/K MAKOW	650	2	700	482	0	1,182
S/K MAKKI	880	1	496	260	0	756
S/K MADAF	890	2	1,289	454	0	1,743
S/K KHAIR	550	2	0	277	0	277
S/K KESHALI	800	1	0	756	0	756
S/K FATHUL YEMEN	455	5	2,809	385	0	3,194
S/K ISMAIL	740	3	1,779	979	152	2,910
S/K MANSHA ALAH	540	5	4,513	522	0	5,035
S/K IID MOHAMOUD	658	1	615	519	0	1,134
S/K IBRAAHIM	700	2	0	1,559	0	1,559
S/K HIJRAT	800	1	1,700	0	144	1,844
S/K HASHIMI	650	1	0	479	0	479
S/K HARUUN	420	3	0	2,246	0	2,246
S/K HAJI MALAN	650	1	227	0	0	227
S/K JASTA	770	1	0	507	0	507
<b>Sub Total :</b>			<b>370,621</b>	<b>90,192</b>	<b>1,693</b>	<b>462,506</b>

**Grand Total :**      2,806,612      151,288      55,723      3,013,623

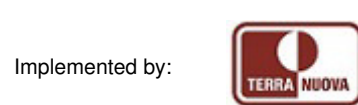
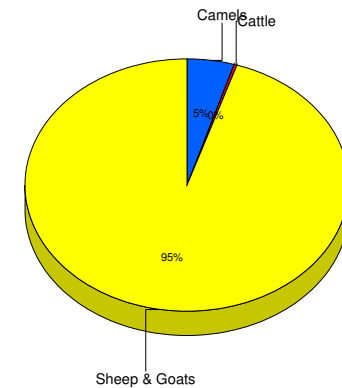
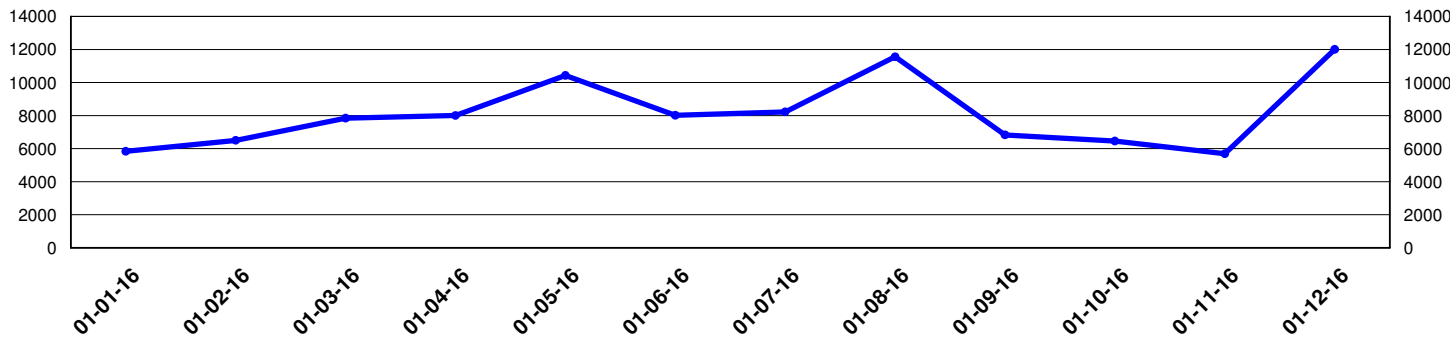




**Cross Border Trade with Djibouti through Lowya-Caddo (Source: Lowya-Caddo Customs Office)**

	Jan-16	Feb-16	Mar-16	Apr-16	May-16	Jun-16	Jul-16	Aug-16	Sep-16	Oct-16	Nov-16	Dec-16	Total
<b>Camels</b>	0	404	197	648	0	714	556	671	430	287	418	315	4,640
<b>Cattle</b>	0	0	289	0	0	0	0	0	0	0	0	0	289
<b>Sheep &amp; Goats</b>	5,838	6,097	7,356	7,356	10,429	7,304	7,669	10,889	6,400	6,169	5,273	11,695	92,475
<b>Total</b>	<b>5,838</b>	<b>6,501</b>	<b>7,842</b>	<b>8,004</b>	<b>10,429</b>	<b>8,018</b>	<b>8,225</b>	<b>11,560</b>	<b>6,830</b>	<b>6,456</b>	<b>5,691</b>	<b>12,010</b>	<b>97,404</b>

**Total Number of Animals Exported to Djibouti through Lowya Caddo during the period**



\* Please refer to the data explanatory key in the first page

DATA STATISTICALLY VALIDATED  
 Visit [www.somalilandchamber.com](http://www.somalilandchamber.com) for more details

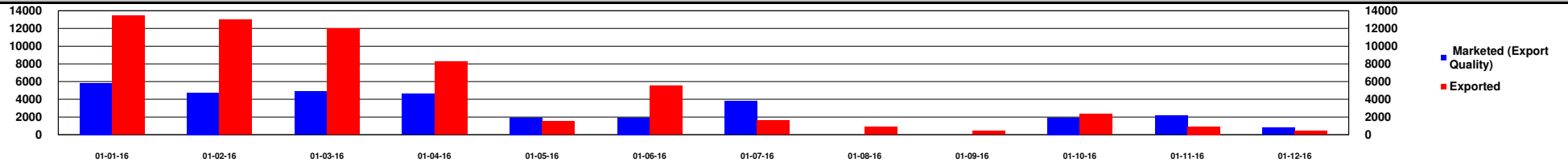


**Comparison of monthly quantities of different species marketed (Export Quality Sheep, Goats and Camels in Hargeisa and Burao; Cattle & Camels in Tog Wajaale) and \*\*Exported**

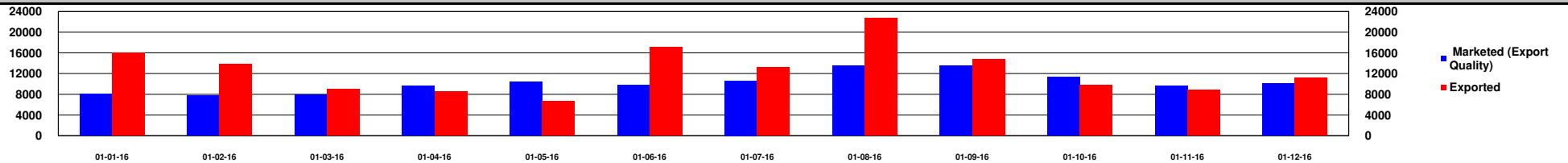
		Jan - 2016	Feb - 2016	Mar - 2016	Apr - 2016	May - 2016	Jun - 2016	Jul - 2016	Aug - 2016	Sep - 2016	Oct - 2016	Nov - 2016	Dec - 2016	Total Quantities
Camels	Marketed (Export Quality)	5,840	4,736	4,899	4,614	1,927	1,925	3,795			1,922	2,156	759	32,573
	Exported	13,459	12,983	11,994	8,267	1,490	5,553	1,622	906	430	2,305	939	415	60,363
Cattle	Marketed (Export Quality)	8,065	7,681	7,915	9,587	10,374	9,814	10,632	13,545	13,458	11,355	9,569	10,049	122,044
	Exported	15,961	13,868	9,006	8,522	6,677	17,085	13,186	22,681	14,808	9,818	8,864	11,101	151,577
Sheep & Goats	Marketed (Export Quality)	91,266	79,723	106,196	70,779	123,166	145,577	173,394	1,275,930	258,109	17,742	1,461	18,766	2,362,109
	Exported	164,099	120,317	171,528	122,899	69,445	288,712	152,299	1,219,648	386,122	104,352	52,461	47,205	2,899,087

**\*\* Exported : Number of Animal Exported through Berbera Port and Lowya-Caddo**

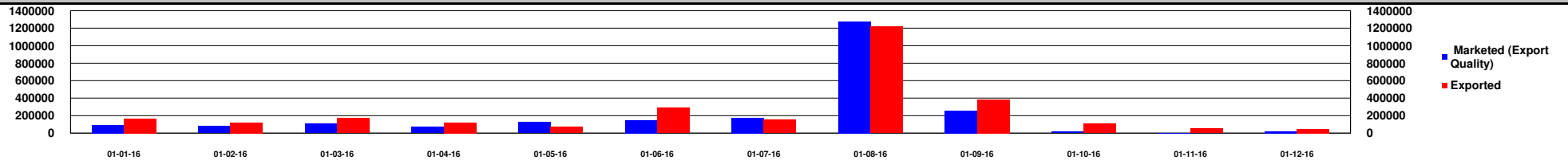
**Comparison of monthly quantities of Camels Marketed (Export Quality in Hargeisa, Burao and Tog Wajaale) and \*\*Exported**



**Comparison of monthly quantities of Cattle Marketed (Export Quality in Tog Wajaale) and \*\*Exported**



**Comparison of monthly quantities of Sheep & Goats Marketed (Export Quality in Hargeisa and Burao) and \*\*Exported**



\* Please refer to the data explanatory key in the first page



Implemented by:



DATA STATISTICALLY VALIDATED

Visit [www.somalilandchamber.com](http://www.somalilandchamber.com) for more details



# Somaliland Chamber of Commerce, Industry and Agriculture

In Collaboration with Min. of Livestock, Min. of Commerce, Min. of Finance, Municipalities of Hargeisa, Burao, Tog Wajaale, Berbera Port Authority and H-Foods Ltd.

Yearly Report for the Period : 01-01-16 - 31-12-16

H-Foods Ltd.

**NO CHILLED MEAT EXPORTED BY H-FOODS Ltd. DURING THE YEAR \***

Funded by :



Implemented by:



\* Please refer to the data explanatory key in the first page

DATA STATISTICALLY VALIDATED

Visit [www.somalilandchamber.com](http://www.somalilandchamber.com) for more details



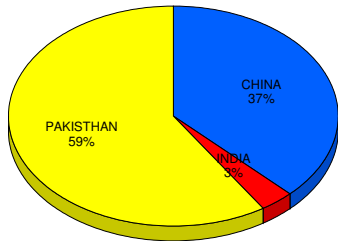
**Hides & Skins Exported from Berbera Port and through Djibouti Port**

Export Date	Type	SHEEP & GOATS		CATTLE		CAMEL	
		Qty	Weight (Kgs)	Qty	Weight (Kgs)	Qty	Weight (Kgs)
	<b>DRY</b>						
Jan 2016	DRY	116,400	92,592	8,424	67,920		
Feb 2016	DRY	59,500	47,600	2,875	23,000		
Mar 2016	DRY	36,750	29,400	3,840	30,720		
Apr 2016	DRY	99,850	79,880				
May 2016	DRY	21,300	17,040	2,900	23,900		
Jun 2016	DRY	21,300	17,040	2,900	23,900		
Jul 2016	DRY	120,950	43,336				
Aug 2016	DRY	72,000	57,600	5,700	45,600		
Sep 2016	DRY	89,500	71,600	11,200	89,600		
Oct 2016	DRY	61,500	49,200				
Nov 2016	DRY	51,600	412,800				
Dec 2016	DRY	83,600	66,800				
	<b>Sub Total :</b>	<b>834,250</b>	<b>984,888</b>	<b>37,839</b>	<b>304,640</b>		
	<b>WET BLUE</b>						
Jan 2016	WET BLUE	72,000	57,600				
May 2016	WET BLUE	24,000	19,200				
Jun 2016	WET BLUE	24,000	19,200				
Jul 2016	WET BLUE	48,000	38,400				
Aug 2016	WET BLUE	48,000	38,400				
Sep 2016	WET BLUE	72,000	57,600				
Oct 2016	WET BLUE	144,000	135,200				
Nov 2016	WET BLUE	72,000	57,600				

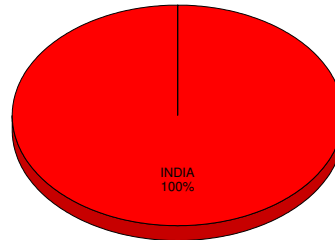
Dec 2016	WET BLUE	72,000	57,600				
	<b>Sub Total :</b>	<b>576,000</b>	<b>480,800</b>				
	<b>Grand Total :</b>	<b>1,410,250</b>	<b>1,465,688</b>	<b>37,839</b>	<b>304,640</b>		

**Destination of Hides & Skins Exported from Berbera Port and through Djibouti Port**

**SHEEP & GOATS**

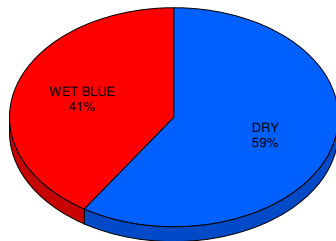


**CATTLE**



**Type of Hides & Skins Exported from Berbera Port and through Djibouti Port**

**SHEEP & GOATS**



**CATTLE**

